



SZABO SCANDIC

Part of Europa Biosite

Produktinformation



Forschungsprodukte & Biochemikalien



Zellkultur & Verbrauchsmaterial



Diagnostik & molekulare Diagnostik



Laborgeräte & Service

Weitere Information auf den folgenden Seiten!
See the following pages for more information!



Lieferung & Zahlungsart

siehe unsere [Liefer- und Versandbedingungen](#)

Zuschläge

- Mindermengenzuschlag
- Trockeneiszuschlag
- Gefahrgutzuschlag
- Expressversand

SZABO-SCANDIC HandelsgmbH

Quellenstraße 110, A-1100 Wien

T. +43(0)1 489 3961-0

F. +43(0)1 489 3961-7

mail@szabo-scandic.com

www.szabo-scandic.com

[linkedin.com/company/szaboscandic](https://www.linkedin.com/company/szaboscandic) 

CYP2E1 293T Cell Transient Overexpression Lysate(Denatured)

Catalog # : H00001571-T01

規格 : [100 uL]

[List All](#)

Specification

Transfected Cell Line: 293T

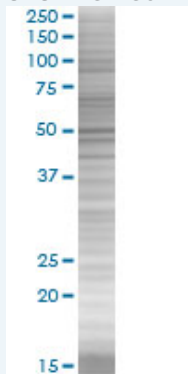
Plasmid: pCMV-CYP2E1 full-length

Host: Human

Theoretical MW (kDa): 56.8

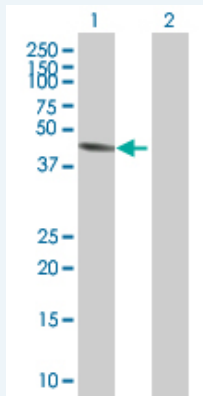
Quality Control Testing: Transient overexpression cell lysate was tested with Anti-CYP2E1 antibody (H00001571-B01) by Western Blots.

SDS-PAGE Gel



CYP2E1 transfected lysate.

Western Blot



Lane 1: CYP2E1 transfected lysate (56.8 KDa)

Lane 2: Non-transfected lysate.

Storage Buffer: 1X Sample Buffer (50 mM Tris-HCl, 2% SDS, 10% glycerol, 300 mM 2-mercaptoethanol, 0.01% Bromophenol blue)

Storage Instruction: Store at -80°C. Aliquot to avoid repeated freezing and thawing.

MSDS:  [Download](#)

Applications

Western Blot

Gene Information

Entrez GeneID: [1571](#)

GeneBank [NM_000773.3](#)
Accession#:

Protein =
Accession#:

Gene Name: CYP2E1

Gene Alias: CPE1,CYP2E,P450-J,P450C2E

Gene Description: cytochrome P450, family 2, subfamily E, polypeptide 1

Omim ID: [124040](#)

Gene Ontology: [Hyperlink](#)

Gene Summary: This gene encodes a member of the cytochrome P450 superfamily of enzymes. The cytochrome P450 proteins are monooxygenases which catalyze many reactions involved in drug metabolism and synthesis of cholesterol, steroids and other lipids. This protein localizes to the endoplasmic reticulum and is induced by ethanol, the diabetic state, and starvation. The enzyme metabolizes both endogenous substrates, such as ethanol, acetone, and acetal, as well as exogenous substrates including benzene, carbon tetrachloride, ethylene glycol, and nitrosamines which are premutagens found in cigarette smoke. Due to its many substrates, this enzyme may be involved in such varied processes as gluconeogenesis, hepatic cirrhosis, diabetes, and cancer. [provided by RefSeq]

Other Designations: OTTHUMP00000020813,OTTHUMP00000046571,cytochrome P450 2E1,cytochrome P450, subfamily IIE (ethanol-inducible), polypeptide 1,flavoprotein-linked monooxygenase,microsomal monooxygenase,xenobiotic monooxygenase

Gene Pathway

[Arachidonic acid metabolism](#) [Drug metabolism - cytochrome P450](#) [Linoleic acid metabolism](#)
[Metabolic pathways](#) [Metabolism of xenobiotics by cytochrome P450](#)

Related Disease

[Abnormalities](#) [Acute Disease](#) [Adenocarcinoma](#) [Adenoma](#)
[Alcohol-Induced Disorders](#) [Nervous System](#) [Alcoholism](#) [Alzheimer Disease](#)
[Anemia](#) [Aplastic Aneuploidy](#) [Arteriosclerosis](#) [Asthma](#) [Asthma](#) [Atherosclerosis](#)
[Atherosclerosis](#) [Brain Neoplasms](#) [Breast cancer](#) [Breast Neoplasms](#) [Bronchitis](#) [Calcinosis](#)

... see more