



# SZABO SCANDIC

Part of Europa Biosite

## Produktinformation



Forschungsprodukte & Biochemikalien



Zellkultur & Verbrauchsmaterial



Diagnostik & molekulare Diagnostik



Laborgeräte & Service

Weitere Information auf den folgenden Seiten!  
See the following pages for more information!



### Lieferung & Zahlungsart

siehe unsere [Liefer- und Versandbedingungen](#)

### Zuschläge

- Mindermengenzuschlag
- Trockeneiszuschlag
- Gefahrgutzuschlag
- Expressversand

### SZABO-SCANDIC HandelsgmbH

Quellenstraße 110, A-1100 Wien

T. +43(0)1 489 3961-0

F. +43(0)1 489 3961-7

[mail@szabo-scandic.com](mailto:mail@szabo-scandic.com)

[www.szabo-scandic.com](http://www.szabo-scandic.com)

[linkedin.com/company/szaboscandic](https://www.linkedin.com/company/szaboscandic) 

**CYP4B1 purified MaxPab rabbit polyclonal antibody (D01P)** MaxPab®

Catalog # : H00001580-D01P

規格 : [ 100 ug ]

[List All](#)

**Specification**

**Product Description:** Rabbit polyclonal antibody raised against a full-length human CYP4B1 protein.

**Immunogen:** CYP4B1 (AAH17758.1, 1 a.a. ~ 512 a.a) full-length human protein.

**Sequence:**  
 MVPSFLSLSFSSLGLWASGLILVLGFLKLIHLLRRQTLAKAMDKFPGPP  
 THWLFGHLEIQETGSLDKVSWAHQFPYAHPLWFGQFIGFLNIYEPDY  
 AKAVYSRGDPKAPDVYDFFLQWIGRGLLVLEGPKWLQHRKLLTPGFHY  
 DVLKPYVAVFTESTRIMLDKWEKAREGKSFDIFCDVGHMALNTLMKCT  
 FGRGDTGLGHSRDSSYYLAVSDLTLLMQQRLVSFYHNDFIYWLTPHG  
 RRFLRACQVAHDHTDQVIRERKAALQDEKVRKKIQNRRHLDLFDILLGAR  
 DEDDIKLSADLRAEVDTFMFEHDTTSGISWFLYCMALYPEHQHRCR  
 EEVREILGDQDFQWDDLKGMTYLTMCIKESFRLYPPVPQVYRQLSKPV  
 TFVDGRSLPAGSLISMHIYALHRNSAVWPDEVFDSLRFSTENASKRHPF  
 AFMPFSAGPRNCIGQQFAMSEMKVVTAMCLLRFESLDP SRLPIKMPQL  
 VLRSKNGFHLHLKPLGPGSGK

**Host:** Rabbit

**Reactivity:** Human, Mouse

**Quality Control Testing:** Antibody reactive against mammalian transfected lysate.

**Storage Buffer:** In 1x PBS, pH 7.4

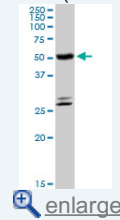
**Storage Instruction:** Store at -20°C or lower. Aliquot to avoid repeated freezing and thawing.

**MSDS:**  [Download](#)

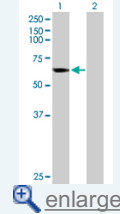
**Datasheet:**  [Download](#)

**Application Image**

Western Blot (Tissue lysate)

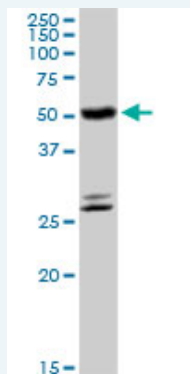


Western Blot (Transfected lysate)



**Applications**

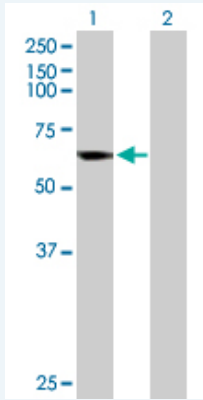
Western Blot (Tissue lysate)



CYP4B1 MaxPab rabbit polyclonal antibody. Western Blot analysis of CYP4B1 expression in mouse kidney.

 [Protocol Download](#)

## Western Blot (Transfected lysate)



Western Blot analysis of CYP4B1 expression in transfected 293T cell line ([H00001580-T02](#)) by CYP4B1 MaxPab polyclonal antibody.

Lane 1: CYP4B1 transfected lysate(59.10 KDa).

Lane 2: Non-transfected lysate.

 [Protocol Download](#)

## Gene Information

Entrez GeneID: [1580](#)

GeneBank [BC017758.1](#)  
Accession#:

Protein [AAH17758.1](#)  
Accession#:

Gene Name: CYP4B1

Gene Alias: CYP1VB1,P-450HP

Gene Description: cytochrome P450, family 4, subfamily B, polypeptide 1

Omim ID: [124075](#)

Gene Ontology: [Hyperlink](#)

**Gene Summary:** This gene encodes a member of the cytochrome P450 superfamily of enzymes. The cytochrome P450 proteins are monooxygenases which catalyze many reactions involved in drug metabolism and synthesis of cholesterol, steroids and other lipids. This protein localizes to the endoplasmic reticulum. In rodents, the homologous protein has been shown to metabolize certain carcinogens; however, the specific function of the human protein has not been determined. Two transcript variants encoding slightly different isoforms have been found for this gene. [provided by RefSeq]

**Other Designations:** OTTHUMP00000009678,OTTHUMP00000009679,cytochrome P450, subfamily 1VB, polypeptide 1,microsomal monooxygenase

## Related Disease

[Cardiovascular Diseases](#) [Diabetes Mellitus, Type 2](#) [Edema](#)  
[Genetic Predisposition to Disease](#) [Hearing Loss](#) [Kidney Failure, Chronic](#)  
[Tobacco Use Disorder](#)