



SZABO SCANDIC

Part of Europa Biosite

Produktinformation



Forschungsprodukte & Biochemikalien



Zellkultur & Verbrauchsmaterial



Diagnostik & molekulare Diagnostik



Laborgeräte & Service

Weitere Information auf den folgenden Seiten!
See the following pages for more information!



Lieferung & Zahlungsart

siehe unsere [Liefer- und Versandbedingungen](#)

Zuschläge

- Mindermengenzuschlag
- Trockeneiszuschlag
- Gefahrgutzuschlag
- Expressversand

SZABO-SCANDIC HandelsgmbH

Quellenstraße 110, A-1100 Wien

T. +43(0)1 489 3961-0

F. +43(0)1 489 3961-7

mail@szabo-scandic.com

www.szabo-scandic.com

[linkedin.com/company/szaboscandic](https://www.linkedin.com/company/szaboscandic) 

CYP11A1 purified MaxPab mouse polyclonal antibody (B01P) MaxPab®

Catalog # : H00001583-B01P

規格 : [50 ug]

[List All](#)

Specification

Product Description: Mouse polyclonal antibody raised against a full-length human CYP11A1 protein.

Immunogen: CYP11A1 (AAH32329.1, 1 a.a. ~ 521 a.a) full-length human protein.

Sequence:
 MLAKGLPPRSVLVKGCQTFLSAPREGLGRLRVPTGEGAGISTRSPRPF
 NEIPSPGDNGWLNLYHFWRETGTHKVLHHVQNFQKYGPIYREKLGNE
 SVYVIDPEDVALLFKSEGNPERFLIPPWVAYHQYYQRPIGVLLKKSAAW
 KKDRVALNQEVMapeatknflplldavsrdfvsvlhrrikkagsgnySG
 DISDDLFRFAFESITNVIFGERQGMLEEVNPEAQRFDIAIQMFHTSVPM
 LNLPPDLFRLFRKTWKDHVAAWDVIFSKADIYTNFQYWELRQKGSVHH
 DYRGILYRLLGDSKMSFEDIKANVTEMLAGGVDTTSMTLQWHLIEMARN
 LKVQDMLRAEVLAAARHQAQGDMLQLVPLLKASIKETLRLHPISVTLQ
 RYLVNDLVLRDYMIPAKTLVQVAIYALGREPTFFFDPENFDPTRWLSKDK
 NITYFRNLGFGWVGRQCLGRRIAEMTIFLINMLENFRVEIQHLSDVGTT
 FNLILMPEKPISFTFWPFNQEQATQQ

Host: Mouse

Reactivity: Human

Quality Control Testing: Antibody reactive against mammalian transfected lysate.

Storage Buffer: In 1x PBS, pH 7.4

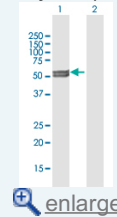
Storage Instruction: Store at -20°C or lower. Aliquot to avoid repeated freezing and thawing.

MSDS:  [Download](#)

Datasheet:  [Download](#)

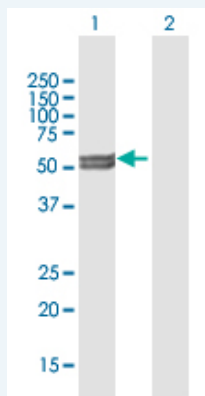
Application Image

Western Blot (Transfected lysate)



Applications

Western Blot (Transfected lysate)



Western Blot analysis of CYP11A1 expression in transfected 293T cell line (H00001583-T01) by CYP11A1 MaxPab polyclonal antibody.

Lane 1: CYP11A1 transfected lysate(57.31 kDa).

Gene Information

Entrez GeneID: [1583](#)

GeneBank Accession#: [BC032329.1](#)

Protein Accession#: [AAH32329.1](#)

Gene Name: CYP11A1

Gene Alias: CYP11A,P450SCC

Gene Description: cytochrome P450, family 11, subfamily A, polypeptide 1

Omim ID: [118485](#), [201710](#)

Gene Ontology: [Hyperlink](#)

Gene Summary: This gene encodes a member of the cytochrome P450 superfamily of enzymes. The cytochrome P450 proteins are monooxygenases which catalyze many reactions involved in drug metabolism and synthesis of cholesterol, steroids and other lipids. This protein localizes to the mitochondrial inner membrane and catalyzes the conversion of cholesterol to pregnenolone, the first and rate-limiting step in the synthesis of the steroid hormones. Two transcript variants encoding different isoforms have been found for this gene. The cellular location of the smaller isoform is unclear since it lacks the mitochondrial-targeting transit peptide. [provided by RefSeq]

Other Designations: cholesterol 20-22 desmolase,cholesterol monooxygenase (side-chain cleaving),cytochrome P450, subfamily XI A,cytochrome P450, subfamily XI A (cholesterol side chain cleavage),cytochrome P450C11A1,steroid 20-22-lyase

Gene Pathway

[C21-Steroid hormone metabolism](#) [Metabolic pathways](#)

Related Disease

[Adenocarcinoma](#) [Asperger Syndrome](#) [Autistic Disorder](#) [Breast cancer](#) [Breast Neoplasms](#) [Breast Neoplasms, Male](#) [Carcinoma, Non-Small-Cell Lung](#) [Carcinoma, Squamous Cell](#) [Celiac Disease](#) [Colorectal Neoplasms](#) [Disease Progression](#) [Ductus Arteriosus, Patent](#) [Endometrial Neoplasms](#) [Fibrocystic Breast Disease](#) [Genetic Predisposition to Disease](#) [Genital Neoplasms, Male](#) [Hyperandrogenism](#) [Hypertension](#) [Infant, Premature, Diseases](#)

... see more