



SZABO SCANDIC

Part of Europa Biosite

Produktinformation



Forschungsprodukte & Biochemikalien



Zellkultur & Verbrauchsmaterial



Diagnostik & molekulare Diagnostik



Laborgeräte & Service

Weitere Information auf den folgenden Seiten!
See the following pages for more information!



Lieferung & Zahlungsart

siehe unsere [Liefer- und Versandbedingungen](#)

Zuschläge

- Mindermengenzuschlag
- Trockeneiszuschlag
- Gefahrgutzuschlag
- Expressversand

SZABO-SCANDIC HandelsgmbH

Quellenstraße 110, A-1100 Wien

T. +43(0)1 489 3961-0

F. +43(0)1 489 3961-7

mail@szabo-scandic.com

www.szabo-scandic.com

[linkedin.com/company/szaboscandic](https://www.linkedin.com/company/szaboscandic) 

CYP11A1 purified MaxPab rabbit polyclonal antibody (D01P) MaxPab®

Catalog # : H00001583-D01P

規格 : [100 ug]

[List All](#)

Specification

Product Description: Rabbit polyclonal antibody raised against a full-length human CYP11A1 protein.

Immunogen: CYP11A1 (AAH32329.1, 1 a.a. ~ 521 a.a) full-length human protein.

Sequence:
MLAKGLPPRSVLVKGCQTFLSAPREGLGRLRVPTGEGAGISTRSPRPF
NEIPSPGDNGWLNLYHFWRETGTHKVHLHHVQNFQKYGPIYREKLGNE
SVYVIDPEDVALLFKSEGNPERFLIPPWWAYHQYYQRPIGVLLKKSAAW
KKDRVALNQEVMapeatKNFLPLLDVSRDFVSVLHRRIKKAGSGNYSG
DISDDLFRFAFESITNVIFGERQGMLEEVNPEAQRFDIAIQMFHTSVP
LNLPPDLFRLFRKTWKDHVAAWDVIFSKADIYQNFYWELRQKGSVHH
DYRGILYRLLGDSKMSFEDIKANVTEMLAGGVDTTSMTLQWHLIEMARN
LKVQDMLRAEVLAAARHQAQGDMLQLVPLLKASIKETLRLHPISVTLQ
RYLVNDLVLRDYMIPAKTLVQVAIYALGREPTFFFDPENFDPTRWLSKDK
NITYFRNLGFGWVGRQCLGRRIAELEMTIFLINMLENFRVEIQHLSDVGT
FNLILMPEKPISFTFWPFNQEQ

Host: Rabbit

Reactivity: Human

Quality Control Testing: Antibody reactive against mammalian transfected lysate.

Storage Buffer: In 1x PBS, pH 7.4

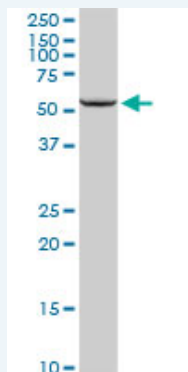
Storage Instruction: Store at -20°C or lower. Aliquot to avoid repeated freezing and thawing.

MSDS: [Download](#)

Datasheet: [Download](#)

Applications

Western Blot (Tissue lysate)

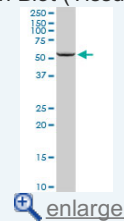


CYP11A1 MaxPab rabbit polyclonal antibody. Western Blot analysis of CYP11A1 expression in human kidney.

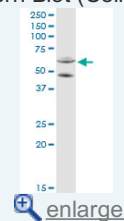
[Protocol Download](#)

Application Image

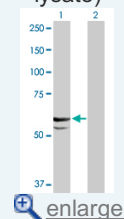
Western Blot (Tissue lysate)



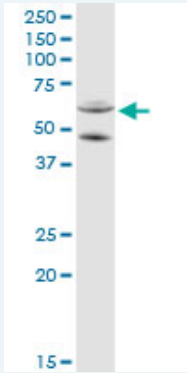
Western Blot (Cell lysate)




Western Blot (Transfected lysate)



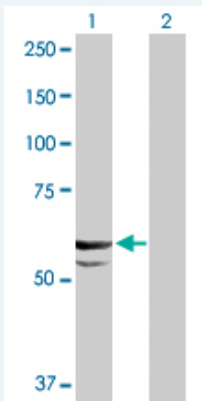
Western Blot (Cell lysate)



CYP11A1 MaxPab rabbit polyclonal antibody. Western Blot analysis of CYP11A1 expression in Jurkat.

 [Protocol Download](#)

Western Blot (Transfected lysate)



Western Blot analysis of CYP11A1 expression in transfected 293T cell line ([H00001583-T01](#)) by CYP11A1 MaxPab polyclonal antibody.

Lane 1: CYP11A1 transfected lysate(60.10 KDa).

Lane 2: Non-transfected lysate.

 [Protocol Download](#)

Gene Information

Entrez GeneID: [1583](#)

GeneBank [BC032329.1](#)

Accession#:

Protein [AAH32329.1](#)

Accession#:

Gene Name: CYP11A1

Gene Alias: CYP11A,P450SCC

Gene Description: cytochrome P450, family 11, subfamily A, polypeptide 1

Omim ID: [118485](#), [201710](#)

Gene Ontology: [Hyperlink](#)

Gene Summary: This gene encodes a member of the cytochrome P450 superfamily of enzymes. The cytochrome P450 proteins are monooxygenases which catalyze many reactions involved in drug metabolism and synthesis of cholesterol, steroids and other lipids. This protein localizes to the mitochondrial inner membrane and catalyzes the conversion of cholesterol to pregnenolone, the first and rate-limiting step in the

synthesis of the steroid hormones. Two transcript variants encoding different isoforms have been found for this gene. The cellular location of the smaller isoform is unclear since it lacks the mitochondrial-targeting transit peptide. [provided by RefSeq]

Other Designations: cholesterol 20-22 desmolase,cholesterol monooxygenase (side-chain cleaving),cytochrome P450, subfamily XIa,cytochrome P450, subfamily XIa (cholesterol side chain cleavage),cytochrome P450C11A1,steroid 20-22-lyase

Gene Pathway

[C21-Steroid hormone metabolism](#) [Metabolic pathways](#)

Related Disease

[Adenocarcinoma](#) [Asperger Syndrome](#) [Autistic Disorder](#) [Breast cancer](#) [Breast Neoplasms](#) [Breast Neoplasms, Male](#) [Carcinoma, Non-Small-Cell Lung](#) [Carcinoma, Squamous Cell](#) [Celiac Disease](#) [Colorectal Neoplasms](#) [Disease Progression](#) [Ductus Arteriosus, Patent](#) [Endometrial Neoplasms](#) [Fibrocystic Breast Disease](#) [Genetic Predisposition to Disease](#) [Genital Neoplasms, Male](#) [Hyperandrogenism](#) [Hypertension](#) [Infant, Premature, Diseases](#)

... see more

[服務條款](#) | [隱私權政策](#) | [著作及商標](#) | [網站地圖](#)

©2016 亞諾法生技股份有限公司 Abnova Corporation. 版權所有.