



# SZABO SCANDIC

Part of Europa Biosite

## Produktinformation



Forschungsprodukte & Biochemikalien



Zellkultur & Verbrauchsmaterial



Diagnostik & molekulare Diagnostik



Laborgeräte & Service

Weitere Information auf den folgenden Seiten!  
See the following pages for more information!



### Lieferung & Zahlungsart

siehe unsere [Liefer- und Versandbedingungen](#)

### Zuschläge

- Mindermengenzuschlag
- Trockeneiszuschlag
- Gefahrgutzuschlag
- Expressversand

### SZABO-SCANDIC HandelsgmbH

Quellenstraße 110, A-1100 Wien

T. +43(0)1 489 3961-0

F. +43(0)1 489 3961-7

[mail@szabo-scandic.com](mailto:mail@szabo-scandic.com)

[www.szabo-scandic.com](http://www.szabo-scandic.com)

[linkedin.com/company/szaboscandic](https://www.linkedin.com/company/szaboscandic) 

## CYP11B1 MaxPab mouse polyclonal antibody (B01) MaxPab®

Catalog # : H00001584-B01

規格 : [ 50 uL ]

[List All](#)

### Specification

**Product Description:** Mouse polyclonal antibody raised against a full-length human CYP11B1 protein.

**Immunogen:** CYP11B1 (AAH96285.1, 1 a.a. ~ 574 a.a) full-length human protein.

**Sequence:**  
 MALRAKAEVCMVWPWLSLQRAQALGTRAARVPRTLVPFEAMPRRPGN  
 RWLRLLQIWREQGYEDLHLEVHQTFQELGPIFRSRHSASFGRWGRSAA  
 RAGLWRCQGRGWCRANPSSLQRQDSEALKYDLGGAGMVCVMLPED  
 VEKLQQVDSLHPHRMSLEPWVAYRQHRGHKCGVFLNADRGNSSPPF  
 PGGIHGAPTHSGCRNGPEWRFNRLRLNPEVLSPNAVQRFLPMVDAVAR  
 DFSQALKKKVLQNARGSLTLDVQPSIFHYTIEASNLALFGERLGLVGHSP  
 SSASLNFLHLEVFMFKSTVQLMFMPRSLSRWTSKVVWKEHFEAWDCIF  
 QYGDNCIQKIYQELAFSRPQQYT SIVAELLNAELSPDAIKANSMELTAGS  
 VDTTVFPLLMTLFLARNPNVQQALRQESLAAAASISEHPQKATTELPLL  
 RAALKETLRLYPVGLFLERVASSDLVLQNYHIPAGTLVRVFLYSLGRNPA  
 LFPRPERYNPQRWLDIRGSGRNFYHVPF GF GMRQCLGRRLAEAEMLLL  
 LHVLKHLQVETLTQEDIKMVYSFILRPSMFPLLTFRIN

**Host:** Mouse

**Reactivity:** Human

**Quality Control Testing:** Antibody reactive against mammalian transfected lysate.

**Storage Buffer:** No additive

**Storage Instruction:** Store at -20°C or lower. Aliquot to avoid repeated freezing and thawing.

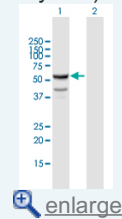
**Note:** For IHC and IF applications, antibody purification with Protein A will be needed prior to use.

**MSDS:**  [Download](#)

**Datasheet:**  [Download](#)

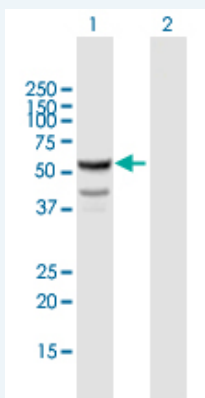
### Application Image

Western Blot (Transfected lysate)



### Applications


Western Blot (Transfected lysate)



Western Blot analysis of CYP11B1 expression in transfected 293T cell line ([H00001584-T01](#)) by CYP11B1 MaxPab polyclonal antibody.

Lane 1: CYP11B1 transfected lysate(63.14 KDa).

Lane 2: Non-transfected lysate.

 [Protocol Download](#)

## Gene Information

**Entrez GeneID:** [1584](#)

**GeneBank Accession#:** [BC096285.3](#)

**Protein Accession#:** [AAH96285.1](#)

**Gene Name:** CYP11B1

**Gene Alias:** CPN1,CYP11B,DKFZp686B05283,FHI,FLJ36771,P450C11

**Gene Description:** cytochrome P450, family 11, subfamily B, polypeptide 1

**Omim ID:** [103900](#), [202010](#), [610613](#)

**Gene Ontology:** [Hyperlink](#)

**Gene Summary:** This gene encodes a member of the cytochrome P450 superfamily of enzymes. The cytochrome P450 proteins are monooxygenases which catalyze many reactions involved in drug metabolism and synthesis of cholesterol, steroids and other lipids. This protein localizes to the mitochondrial inner membrane and is involved in the conversion of progesterone to cortisol in the adrenal cortex. Mutations in this gene cause congenital adrenal hyperplasia due to 11-beta-hydroxylase deficiency. Transcript variants encoding different isoforms have been noted for this gene. [provided by RefSeq]

**Other Designations:** cytochrome P450, subfamily XIB (steroid 11-beta-hydroxylase), polypeptide 1,cytochrome p450 XIB1,steroid 11-beta-hydroxylase,steroid 11-beta-monooxygenase

## Gene Pathway

[Androgen and estrogen metabolism](#) [C21-Steroid hormone metabolism](#) [Metabolic pathways](#)

## Related Disease

[Adrenal Cortex Neoplasms](#) [Adrenal Hyperplasia, Congenital](#)  
[Adrenal hyperplasia, congenital](#) [Asperger Syndrome](#) [Autistic Disorder](#) [Breast Neoplasms](#)  
[Cardiovascular Diseases](#) [Coronary Artery Disease](#) [Diabetes Mellitus, Type 2](#)  
[Ductus Arteriosus, Patent](#) [Edema](#) [Genetic Predisposition to Disease](#) [Hyperaldosteronism](#)  
[Hypertension](#) [Infant, Premature, Diseases](#) [Kidney Failure, Chronic](#)  
[Lymphoma, Non-Hodgkin](#) [Postoperative Complications](#) [Social Perception](#)

[服務條款](#) | [隱私權政策](#) | [著作及商標](#) | [網站地圖](#)

©2016 亞諾法生技股份有限公司 Abnova Corporation. 版權所有.