



SZABO SCANDIC

Part of Europa Biosite

Produktinformation



Forschungsprodukte & Biochemikalien



Zellkultur & Verbrauchsmaterial



Diagnostik & molekulare Diagnostik



Laborgeräte & Service

Weitere Information auf den folgenden Seiten!
See the following pages for more information!



Lieferung & Zahlungsart

siehe unsere [Liefer- und Versandbedingungen](#)

Zuschläge

- Mindermengenzuschlag
- Trockeneiszuschlag
- Gefahrgutzuschlag
- Expressversand

SZABO-SCANDIC HandelsgmbH

Quellenstraße 110, A-1100 Wien

T. +43(0)1 489 3961-0

F. +43(0)1 489 3961-7

mail@szabo-scandic.com

www.szabo-scandic.com

[linkedin.com/company/szaboscandic](https://www.linkedin.com/company/szaboscandic) 

CYP24A1 monoclonal antibody (M02), clone 1E1

Catalog # : H00001591-M02

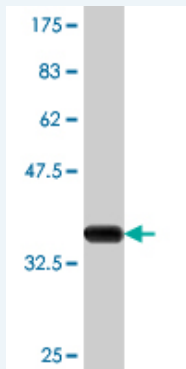
規格 : [100 ug]

List All

Specification

Product Description:	Mouse monoclonal antibody raised against a partial recombinant CYP24A1.
Immunogen:	CYP24A1 (NP_000773, 415 a.a. ~ 514 a.a) partial recombinant protein with GST tag. MW of the GST tag alone is 26 KDa.
Sequence:	LMLNTQVLGSSSEDNFEDSSQFRPERWLQEKEKINPFAHLPGVGVKRMCI GRRLAELQLHLALCWIVRKYDIQATDNEPVEMLHSGTLVPSRELPIAFCQ R
Host:	Mouse
Reactivity:	Human
Isotype:	IgG2a Kappa

Quality Control Testing: Antibody Reactive Against Recombinant Protein.



Western Blot detection against Immunogen (36.74 KDa) .

Storage Buffer: In 1x PBS, pH 7.4

Storage Instruction: Store at -20°C or lower. Aliquot to avoid repeated freezing and thawing.

MSDS: [Download](#)

Datasheet: [Download](#)

Publication Reference

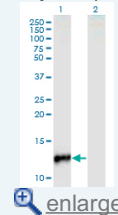
1. Dysregulation of renal vitamin D metabolism in the uremic rat. Helvig CF, Cuerrier D, Hosfield CM, Ireland B, Kharebov AZ, Kim JW, Ramjit NJ, Ryder K, Tabash SP, Herzenberg AM, Epps TM, Petkovich M. *Kidney Int.* 2010 Jun 9. [Epub ahead of print]

Applications

Western Blot (Transfected lysate)

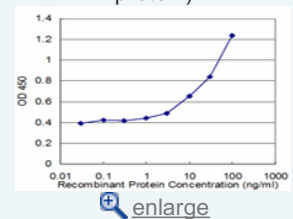
Application Image

Western Blot (Transfected lysate)

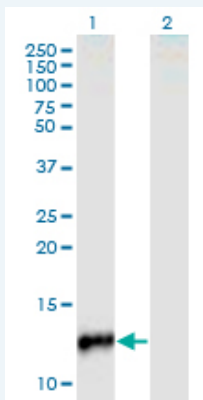


Western Blot (Recombinant protein)

Sandwich ELISA (Recombinant protein)



ELISA



Western Blot analysis of CYP24A1 expression in transfected 293T cell line by CYP24A1 monoclonal antibody (M02), clone 1E1.

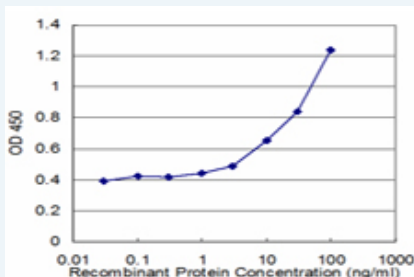
Lane 1: CYP24A1 transfected lysate (Predicted MW: 11.11 kDa).
Lane 2: Non-transfected lysate.

[Protocol Download](#)

Western Blot (Recombinant protein)

[Protocol Download](#)

Sandwich ELISA (Recombinant protein)



Detection limit for recombinant GST tagged CYP24A1 is approximately 1ng/ml as a capture antibody.

[Protocol Download](#)

ELISA

Gene Information

Entrez GeneID: [1591](#)

GeneBank Accession#: [NM_000782](#)

Protein Accession#: [NP_000773](#)

Gene Name: CYP24A1

Gene Alias: CP24,CYP24,MGC126273,MGC126274,P450-CC24

Gene Description: cytochrome P450, family 24, subfamily A, polypeptide 1

Omim ID: [126065](#)

Gene Ontology: [Hyperlink](#)

Gene Summary: This gene encodes a member of the cytochrome P450 superfamily of enzymes. The cytochrome P450 proteins are monooxygenases which catalyze many reactions involved in drug metabolism and synthesis of cholesterol, steroids and other lipids. This mitochondrial protein initiates the degradation of 1,25-dihydroxyvitamin D3, the physiologically active

form of vitamin D3, by hydroxylation of the side chain. In regulating the level of vitamin D3, this enzyme plays a role in calcium homeostasis and the vitamin D endocrine system. Alternatively spliced transcript variants encoding different isoforms have been found for this gene. [provided by RefSeq]

Other Designations: 1,25-dihydroxyvitamin D3 24-hydroxylase,24-OHase,OTTHUMP00000031314,cytochrome P450 family 24 subfamily A polypeptide 1,cytochrome P450, subfamily XXIV (vitamin D 24-hydroxylase),exo-mitochondrial protein,vitamin D 24-hydroxylase

Related Disease

[Adenocarcinoma](#) [Asthma](#) [Asthma](#) [Breast cancer](#) [Breast Neoplasms](#) [Calcinosis](#)
[Cardiovascular Diseases](#) [Colon cancer](#) [Colonic Neoplasms](#) [Coronary Artery Disease](#)
[Diabetes Mellitus, Type 1](#) [Diabetes Mellitus, Type 2](#) [Disease Progression](#) [Edema](#)
[Esophageal Neoplasms](#) [Genetic Predisposition to Disease](#) [Hypercalcemia](#) [Hypercalciuria](#)
[Hypertension](#)

... see more

[服務條款](#) | [隱私權政策](#) | [著作及商標](#) | [網站地圖](#)

©2016 亞諾法生技股份有限公司 Abnova Corporation. 版權所有.