



# SZABO SCANDIC

Part of Europa Biosite

## Produktinformation



Forschungsprodukte & Biochemikalien



Zellkultur & Verbrauchsmaterial



Diagnostik & molekulare Diagnostik



Laborgeräte & Service

Weitere Information auf den folgenden Seiten!  
See the following pages for more information!



### Lieferung & Zahlungsart

siehe unsere [Liefer- und Versandbedingungen](#)

### Zuschläge

- Mindermengenzuschlag
- Trockeneiszuschlag
- Gefahrgutzuschlag
- Expressversand

### SZABO-SCANDIC HandelsgmbH

Quellenstraße 110, A-1100 Wien

T. +43(0)1 489 3961-0

F. +43(0)1 489 3961-7

[mail@szabo-scandic.com](mailto:mail@szabo-scandic.com)

[www.szabo-scandic.com](http://www.szabo-scandic.com)

[linkedin.com/company/szaboscandic](https://www.linkedin.com/company/szaboscandic) 

**CYP26A1 purified MaxPab mouse polyclonal antibody (B01P)** MaxPab®

Catalog # : H00001592-B01P

規格 : [ 50 ug ]

[List All](#)

**Specification**

**Product Description:** Mouse polyclonal antibody raised against a full-length human CYP26A1 protein.

**Immunogen:** CYP26A1 (NP\_476498.1, 1 a.a. ~ 428 a.a) full-length human protein.

**Sequence:**  
 MKRRKYGFYKTHLFGRPVTVRVMGADNVRILLGEHRLVSVHWPASVRTI  
 LGSGCLSNLHDSSHKQRKKVIMRAFSREALCYVPVITEEVGSSLEQWLS  
 CGERGLLVYPEVKRLMFRIAMRILLGCEPQLAGDGDSEQQLVEAFEEMT  
 RNLFSLPIDVPFSGLYRGMKARNLIHARIEQNIRAKICGLRASEAGQGCKD  
 ALQLLIEHSWERGERLDMQALKQSSTELLFGGHETTASAATSLITYLGLY  
 PHVLQKVREELKSKGLLCKSNQDNKLDMEILEQLKYIGCVIKETLRLNPPV  
 PGGFRVALKTFELNGYQIPKGWNVIYSICDTHDVAEIFTNKEEFNPDRFML  
 PHPEDASRFSFIPFGGGLRSCVGKEFAKILLKIFTVELARHCDWQLLNGP  
 PTMKTSPVYPVDNLPARFTHFHGEI

**Host:** Mouse

**Reactivity:** Human

**Quality Control Testing:** Antibody reactive against mammalian transfected lysate.

**Storage Buffer:** In 1x PBS, pH 7.4

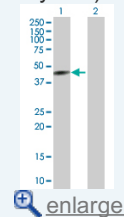
**Storage Instruction:** Store at -20°C or lower. Aliquot to avoid repeated freezing and thawing.

**MSDS:**  [Download](#)

**Datasheet:**  [Download](#)

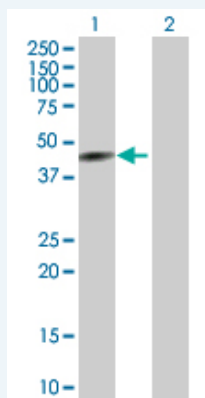
**Application Image**

Western Blot (Transfected lysate)



**Applications**

Western Blot (Transfected lysate)



Western Blot analysis of CYP26A1 expression in transfected 293T cell line (H00001592-T01) by CYP26A1 MaxPab polyclonal antibody.

Lane 1: CYP26A1 transfected lysate(47.08 KDa).

Lane 2: Non-transfected lysate.

## Gene Information

**Entrez GeneID:** [1592](#)

**GeneBank Accession#:** [NM\\_057157.1](#)

**Protein Accession#:** [NP\\_476498.1](#)

**Gene Name:** CYP26A1

**Gene Alias:** CP26,CYP26,P450RAI,P450RAI1

**Gene Description:** cytochrome P450, family 26, subfamily A, polypeptide 1

**Omim ID:** [602239](#)

**Gene Ontology:** [Hyperlink](#)

**Gene Summary:** This gene encodes a member of the cytochrome P450 superfamily of enzymes. The cytochrome P450 proteins are monooxygenases which catalyze many reactions involved in drug metabolism and synthesis of cholesterol, steroids and other lipids. This endoplasmic reticulum protein acts on retinoids, including all-trans-retinoic acid (RA), with both 4-hydroxylation and 18-hydroxylation activities. This enzyme regulates the cellular level of retinoic acid which is involved in regulation of gene expression in both embryonic and adult tissues. Two alternatively spliced transcript variants of this gene, which encode the distinct isoforms, have been reported. [provided by RefSeq]

**Other Designations:** OTTHUMP00000020102,OTTHUMP00000020103,P450, retinoic acid-inactivating, 1,cytochrome P450, subfamily XXVIA, polypeptide 1,retinoic acid 4-hydroxylase,retinoic acid-metabolizing cytochrome

## Gene Pathway

[Retinol metabolism](#)

## Related Disease

[Alzheimer Disease](#) [Alzheimer disease](#) [Cardiovascular Diseases](#) [Dementia](#)  
[Diabetes Complications](#) [Genetic Predisposition to Disease](#) [Glaucoma](#)  
[Glaucoma, Open-Angle](#) [Kidney Diseases](#) [Meningomyelocele](#) [Metabolic Syndrome X](#)  
[Neoplasms](#) [Osteoporosis](#) [Schizophrenia](#) [Schizophrenia](#) [Spinal Cord Diseases](#)  
[Spinal Dysraphism](#) [Vitamin A Deficiency](#)