



SZABO SCANDIC

Part of Europa Biosite

Produktinformation



Forschungsprodukte & Biochemikalien



Zellkultur & Verbrauchsmaterial



Diagnostik & molekulare Diagnostik



Laborgeräte & Service

Weitere Information auf den folgenden Seiten!
See the following pages for more information!



Lieferung & Zahlungsart

siehe unsere [Liefer- und Versandbedingungen](#)

Zuschläge

- Mindermengenzuschlag
- Trockeneiszuschlag
- Gefahrgutzuschlag
- Expressversand

SZABO-SCANDIC HandelsgmbH

Quellenstraße 110, A-1100 Wien

T. +43(0)1 489 3961-0

F. +43(0)1 489 3961-7

mail@szabo-scandic.com

www.szabo-scandic.com

[linkedin.com/company/szaboscandic](https://www.linkedin.com/company/szaboscandic) 

CYP27A1 purified MaxPab mouse polyclonal antibody (B01P) MaxPab®

Catalog # : H00001593-B01P

規格 : [50 ug]

[List All](#)

Specification

Product Description: Mouse polyclonal antibody raised against a full-length human CYP27A1 protein.

Immunogen: CYP27A1 (NP_000775.1, 1 a.a. ~ 531 a.a) full-length human protein.

Sequence:
 MAALGCARLRWALRGAGRGLCPHGARAKAAIPAALPSDKATGAPGAGP
 GVRRRQRSLEEIPRLGQLRFFFQLFVQGYALQLHQLQVLYKAKYGPMW
 MSYLGPMQMHVNLASAPLLEQVMRQEGKYPVRNDMELWKEHRDQHDLT
 YGPFTEGHHWYQLRQALNQRLKPAEAALYTDAFNEIDDFMTRLDQL
 RAESASGNQVSDMAQLFYFALEAICYILFEKRIGCLQRSIPEDTVTFVRSI
 GLMFQNSLYATFLPKWTRPVLFPWKRYLDGWNALFSGGKKLIDEKLEDM
 EAQLQAAGPDGIQVSGYLHFLASGQLSPREAMGSLPELLMAGVDTTSN
 TLTWALYHLSKDPETIQEALHEEVGVVPAGQVPQHKDFAHMPLLKAVLK
 ETLRLYPVPTNSRIIEKEIEVDGFLFPKNTQFVFCHYVVSVDPTAFSEPE
 SFQPHRWLRNSQPATPRIQHPFGSVPFGYGVRACLGRRIAELEMQLLLA
 RLIIQYKVVLPETGELKSVARIMLVPNKKVGLQFLQRQC

Host: Mouse

Reactivity: Human

Quality Control Testing: Antibody reactive against mammalian transfected lysate.

Storage Buffer: In 1x PBS, pH 7.4

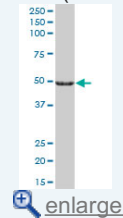
Storage Instruction: Store at -20°C or lower. Aliquot to avoid repeated freezing and thawing.

MSDS: [Download](#)

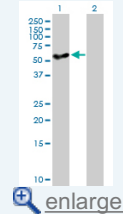
Datasheet: [Download](#)

Application Image

Western Blot (Tissue lysate)

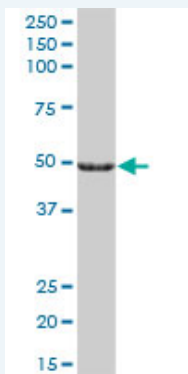


Western Blot (Transfected lysate)



Applications

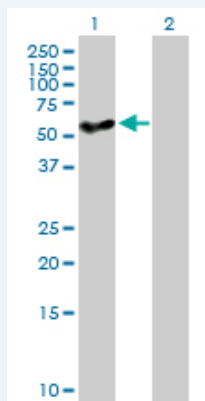
Western Blot (Tissue lysate)



CYP27A1 MaxPab polyclonal antibody. Western Blot analysis of CYP27A1 expression in human liver.

[Protocol Download](#)

Western Blot (Transfected lysate)



Western Blot analysis of CYP27A1 expression in transfected 293T cell line ([H00001593-T01](#)) by CYP27A1 MaxPab polyclonal antibody.

Lane 1: CYP27A1 transfected lysate(58.41 KDa).

Lane 2: Non-transfected lysate.

 [Protocol Download](#)

Gene Information

Entrez GeneID: [1593](#)

GeneBank Accession#: [NM_000784.2](#)

Protein Accession#: [NP_000775.1](#)

Gene Name: CYP27A1

Gene Alias: CP27,CTX,CYP27

Gene Description: cytochrome P450, family 27, subfamily A, polypeptide 1

Omim ID: [213700](#), [606530](#)

Gene Ontology: [Hyperlink](#)

Gene Summary: This gene encodes a member of the cytochrome P450 superfamily of enzymes. The cytochrome P450 proteins are monooxygenases which catalyze many reactions involved in drug metabolism and synthesis of cholesterol, steroids and other lipids. This mitochondrial protein oxidizes cholesterol intermediates as part of the bile synthesis pathway. Since the conversion of cholesterol to bile acids is the major route for removing cholesterol from the body, this protein is important for overall cholesterol homeostasis. Mutations in this gene cause cerebrotendinous xanthomatosis, a rare autosomal recessive lipid storage disease. [provided by RefSeq]

Other Designations: 5-beta-cholestane-3-alpha, 7-alpha, 12-alpha-triol 26-hydroxylase,5-beta-cholestane-3-alpha, 7-alpha, 12-alpha-triol 27-hydroxylase,cholestanetriol 26-monooxygenase,cytochrome P-450C27/25,cytochrome P450, subfamily XXVIIA (steroid 27-hydroxylase, cerebrot

Gene Pathway

[Metabolic pathways](#) [PPAR signaling pathway](#) [Primary bile acid biosynthesis](#)

Related Disease

[Asthma](#) [Cardiovascular Diseases](#) [Diabetes Mellitus, Type 2](#) [Edema](#)
[Genetic Predisposition to Disease](#) [Prostate cancer](#) [Prostatic Neoplasms](#)

[服務條款](#) | [隱私權政策](#) | [著作及商標](#) | [網站地圖](#)

©2016 亞諾法生技股份有限公司 Abnova Corporation. 版權所有.