



SZABO SCANDIC

Part of Europa Biosite

Produktinformation



Forschungsprodukte & Biochemikalien



Zellkultur & Verbrauchsmaterial



Diagnostik & molekulare Diagnostik



Laborgeräte & Service

Weitere Information auf den folgenden Seiten!
See the following pages for more information!



Lieferung & Zahlungsart

siehe unsere [Liefer- und Versandbedingungen](#)

Zuschläge

- Mindermengenzuschlag
- Trockeneiszuschlag
- Gefahrgutzuschlag
- Expressversand

SZABO-SCANDIC HandelsgmbH

Quellenstraße 110, A-1100 Wien

T. +43(0)1 489 3961-0

F. +43(0)1 489 3961-7

mail@szabo-scandic.com

www.szabo-scandic.com

[linkedin.com/company/szaboscandic](https://www.linkedin.com/company/szaboscandic) 

DAB1 293T Cell Transient Overexpression Lysate(Denatured)

Catalog # : H00001600-T01

規格 : [100 uL]

[List All](#)

Specification

Transfected Cell Line: 293T

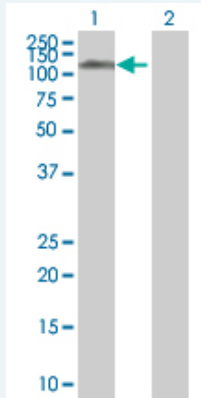
Plasmid: pCMV-DAB1 full-length

Host: Human

Theoretical MW (kDa): 60.94

Quality Control Testing: Transient overexpression cell lysate was tested with Anti-DAB1 antibody (H00001600-B01) by Western Blots.

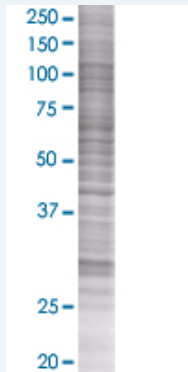
Western Blot



Lane 1: DAB1 transfected lysate (59.6 KDa)

Lane 2: Non-transfected lysate.

SDS-PAGE Gel



DAB1 transfected lysate.

Storage Buffer: 1X Sample Buffer (50 mM Tris-HCl, 2% SDS, 10% glycerol, 300 mM 2-mercaptoethanol, 0.01% Bromophenol blue)

Storage Instruction: Store at -80°C. Aliquot to avoid repeated freezing and thawing.

MSDS: [Download](#)

Applications

Application Image

Western Blot

Western Blot

Gene Information

Entrez GeneID: [1600](#)

GeneBank Accession#: [BC067445](#)

Protein Accession#: [AAH67445](#)

Gene Name: DAB1

Gene Alias: -

Gene Description: disabled homolog 1 (Drosophila)

Omim ID: [603448](#)

Gene Ontology: [Hyperlink](#)

Gene Summary: The laminar organization of multiple neuronal types in the cerebral cortex is required for normal cognitive function. In mice, the disabled-1 gene plays a central role in brain development, directing the migration of cortical neurons past previously formed neurons to reach their proper layer. This gene is similar to disabled-1, and the protein encoded by this gene is thought to be a signal transducer that interacts with protein kinase pathways to regulate neuronal positioning in the developing brain. Alternatively spliced transcript variants of this gene have been reported, but their full length nature has not been determined. [provided by RefSeq]

Other Designations: OTTHUMP00000010045,OTTHUMP00000011753,disabled homolog 1

Related Disease

[Cardiovascular Diseases](#) [Diabetes Mellitus, Type 2](#) [Edema](#)
[Genetic Predisposition to Disease](#) [Tobacco Use Disorder](#) [Vitamin D Deficiency](#)