



SZABO SCANDIC

Part of Europa Biosite

Produktinformation



Forschungsprodukte & Biochemikalien



Zellkultur & Verbrauchsmaterial



Diagnostik & molekulare Diagnostik



Laborgeräte & Service

Weitere Information auf den folgenden Seiten!
See the following pages for more information!



Lieferung & Zahlungsart

siehe unsere [Liefer- und Versandbedingungen](#)

Zuschläge

- Mindermengenzuschlag
- Trockeneiszuschlag
- Gefahrgutzuschlag
- Expressversand

SZABO-SCANDIC HandelsgmbH

Quellenstraße 110, A-1100 Wien

T. +43(0)1 489 3961-0

F. +43(0)1 489 3961-7

mail@szabo-scandic.com

www.szabo-scandic.com

[linkedin.com/company/szaboscandic](https://www.linkedin.com/company/szaboscandic) 

CD55 (Human) Matched Antibody Pair

Catalog # : H00001604-AP41

規格 : [1 Set]

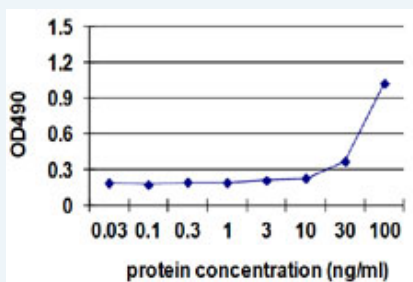
[List All](#)

Specification

Product Description: This antibody pair set comes with matched antibody pair to detect and quantify protein level of human CD55.

Reactivity: Human

Quality Control Testing: Standard curve using recombinant protein (H00001604-Q01) as an analyte.



Sandwich ELISA detection sensitivity ranging from 10 ng/ml to 100 ng/ml.

Supplied Product: Antibody pair set content:
 1. Capture antibody: mouse monoclonal anti-CD55, IgG1 Kappa (100 ug)
 2. Detection antibody: biotinylated mouse monoclonal anti-CD55, IgG1 Kappa (50 ug)
 *Reagents are sufficient for at least 3-5 x 96 well plates using recommended protocols.

Storage Instruction: Store reagents of the antibody pair set at -20°C or lower. Please aliquot to avoid repeated freeze thaw cycle. Reagents should be returned to -20°C storage immediately after use.

MSDS:  [Download](#)

Applications

ELISA Pair (Recombinant protein)

 [Protocol Download](#)

Gene Information

Entrez GeneID: [1604](#)

Gene Name: CD55

Gene Alias: CR,CROM,DAF,TC

Gene Description: CD55 molecule, decay accelerating factor for complement (Cromer blood group)

Omim ID: [125240](#)

Gene Ontology: [Hyperlink](#)

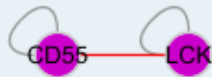
Application Image

ELISA Pair (Recombinant protein)

Gene Summary: This gene encodes a protein involved in the regulation of the complement cascade. The encoded glycoprotein is also known as the decay-accelerating factor (DAF); binding of DAF to complement proteins accelerates their decay, disrupting the cascade and preventing damage to host cells. Antigens present on the DAF glycoprotein constitute the Cromer blood group system (CROM). Two alternatively spliced transcripts encoding different proteins have been identified. The predominant transcript encodes a membrane-bound protein expressed on cells exposed to plasma component proteins but an alternatively spliced transcript produces a soluble protein present at much lower levels. Additional, alternatively spliced transcript variants have been described, but their biological validity has not been determined. [provided by RefSeq]

Other Designations: CD55 antigen, decay accelerating factor for complement

Interactome



Gene Pathway

[Complement and coagulation cascades](#) [Hematopoietic cell lineage](#)

Related Disease

[Asthma](#) [Asthma](#) [Birth Weight](#) [Chorioamnionitis](#) [Down Syndrome](#) [Fetal Membranes, Premature Rupture](#) [Genetic Predisposition to Disease](#) [Glioblastoma](#) [Glioma](#) [Leukemia](#) [Leukemia, Myeloid, Acute](#) [Lymphoma, Non-Hodgkin](#) [Macular Degeneration](#) [Meningeal Neoplasms](#) [Meningioma](#) [Obstetric Labor, Premature](#) [Pre-Eclampsia](#) [Premature Birth](#) [Rhinitis, Allergic, Seasonal](#)

[服務條款](#) | [隱私權政策](#) | [著作及商標](#) | [網站地圖](#)

©2016 亞諾法生技股份有限公司 Abnova Corporation. 版權所有.