



# SZABO SCANDIC

Part of Europa Biosite

## Produktinformation



Forschungsprodukte & Biochemikalien



Zellkultur & Verbrauchsmaterial



Diagnostik & molekulare Diagnostik



Laborgeräte & Service

Weitere Information auf den folgenden Seiten!  
See the following pages for more information!



### Lieferung & Zahlungsart

siehe unsere [Liefer- und Versandbedingungen](#)

### Zuschläge

- Mindermengenzuschlag
- Trockeneiszuschlag
- Gefahrgutzuschlag
- Expressversand

### SZABO-SCANDIC HandelsgmbH

Quellenstraße 110, A-1100 Wien

T. +43(0)1 489 3961-0

F. +43(0)1 489 3961-7

[mail@szabo-scandic.com](mailto:mail@szabo-scandic.com)

[www.szabo-scandic.com](http://www.szabo-scandic.com)

[linkedin.com/company/szaboscandic](https://www.linkedin.com/company/szaboscandic) 

## DCN purified MaxPab mouse polyclonal antibody (B01P) MaxPab®

Catalog # : H00001634-B01P

規格 : [ 50 ug ]

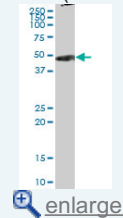
[List All](#)

### Specification

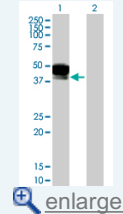
<b>Product Description:</b>	Mouse polyclonal antibody raised against a full-length human DCN protein.
<b>Immunogen:</b>	DCN (NP_001911.1, 1 a.a. ~ 359 a.a) full-length human protein.
<b>Sequence:</b>	MKATIILLLLAQVSWAGPFQQRGLDFDFMLEDEASGIGPEVPDDRDFEPS LGPVCPFRQCCHLRVQCSDLGLDKVPKDLPPDTLLDLQNNKITEIKDG DFKNLKNLHALILVNNKISKVSPGAFTPLVKLERLYL SKNQLKELPEKMPKT LQELRAHENEITKVRKVTFNGLNQMMVIELGTNPLKSSGIENGAFQGMKKL SYIRIADTNITSIPQGLPPSLTELHLDGNKISRVAASLKGLNNLAKLGLSFN SISAVDNGSLANTPHLRELHLDNNKLTRVPGGLAEHKYIQVVYLHNNNISV VGSDDFCPPGHNTKKASYSGVSLFSNPVQYWEIQPSTFRCVYVRSIQ L GNYK
<b>Host:</b>	Mouse
<b>Reactivity:</b>	Human, Rat
<b>Quality Control Testing:</b>	Antibody reactive against mammalian transfected lysate.
<b>Storage Buffer:</b>	In 1x PBS, pH 7.4
<b>Storage Instruction:</b>	Store at -20°C or lower. Aliquot to avoid repeated freezing and thawing.
<b>MSDS:</b>	<a href="#">Download</a>
<b>Datasheet:</b>	<a href="#">Download</a>

### Application Image

Western Blot (Tissue lysate)



Western Blot (Transfected lysate)

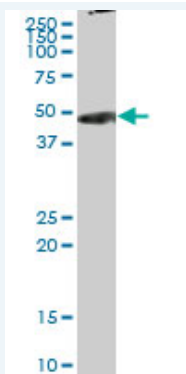


### Publication Reference


- [Changes in glycosaminoglycan structure on differentiation of human embryonic stem cells towards mesoderm and endoderm lineages.](#)  
Gasimli L, Hickey AM, Yang B, Li G, dela Rosa M, Nairn AV, Kulik MJ, Dordick JS, Moremen KW, Dalton S, Linhardt RJ. *BBA General Subjects*(2014), doi: 10.1016/j.bbagen.2014.01.007
- [Structural remodeling of proteoglycans upon retinoic acid-induced differentiation of NCCIT cells.](#)  
Gasimli L, Stansfield HE, Nairn AV, Liu H, Paluh JL, Yang B, Dordick JS, Moremen KW, Linhardt RJ. *Glycoconj J.* 2012 Oct 2. [Epub ahead of print]

### Applications

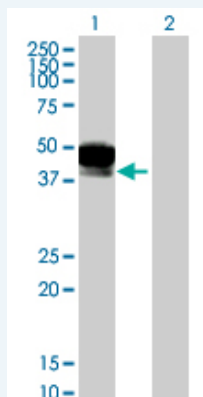
Western Blot (Tissue lysate)



DCN MaxPab polyclonal antibody. Western Blot analysis of DCN expression in rat brain.

 [Protocol Download](#)

#### Western Blot (Transfected lysate)



Western Blot analysis of DCN expression in transfected 293T cell line ([H00001634-T01](#)) by DCN MaxPab polyclonal antibody.

Lane 1: DCN transfected lysate(39.49 KDa).

Lane 2: Non-transfected lysate.

 [Protocol Download](#)

#### Gene Information

Entrez GeneID: [1634](#)

GeneBank [NM\\_001920](#)

Accession#:

Protein [NP\\_001911.1](#)

Accession#:

Gene Name: DCN

Gene Alias: CSCD,DSPG2,PG40,PGII,PGS2,SLRR1B

Gene decorin

Description:

Omim ID: [125255](#), [610048](#)

Gene Ontology: [Hyperlink](#)

**Gene Summary:** The protein encoded by this gene is a small cellular or pericellular matrix proteoglycan that is closely related in structure to biglycan protein. The encoded protein and biglycan are thought to be the result of a gene duplication. This protein is a component of connective tissue, binds to type I collagen fibrils, and plays a role in matrix assembly. It contains one attached glycosaminoglycan chain. This protein is capable of suppressing the growth of various tumor cell lines. There are multiple alternatively spliced transcript variants known for this gene. This gene is a candidate gene for Marfan syndrome. [provided by RefSeq

**Other** bone proteoglycan II,decorin proteoglycan,dermatan sulphate  
**Designations:** proteoglycans II,proteoglycan core protein,small leucine-rich protein 1B

### Gene Pathway

---

[TGF-beta signaling pathway](#)

### Related Disease

---

[Breast cancer](#) [Breast Neoplasms](#) [Cardiovascular Diseases](#) [Diabetes Mellitus, Type 1](#)  
[Diabetes Mellitus, Type 2](#) [Diabetic Nephropathies](#) [Disease Progression](#) [Edema](#)  
[Genetic Predisposition to Disease](#) [Myopia](#) [Myopia, Degenerative](#) [Ovarian Neoplasms](#)  
[Proteinuria](#)

---

[服務條款](#) | [隱私權政策](#) | [著作及商標](#) | [網站地圖](#)

©2016 亞諾法生技股份有限公司 Abnova Corporation. 版權所有.