



# SZABO SCANDIC

Part of Europa Biosite

## Produktinformation



Forschungsprodukte & Biochemikalien



Zellkultur & Verbrauchsmaterial



Diagnostik & molekulare Diagnostik



Laborgeräte & Service

Weitere Information auf den folgenden Seiten!  
See the following pages for more information!



### Lieferung & Zahlungsart

siehe unsere [Liefer- und Versandbedingungen](#)

### Zuschläge

- Mindermengenzuschlag
- Trockeneiszuschlag
- Gefahrgutzuschlag
- Expressversand

### SZABO-SCANDIC HandelsgmbH

Quellenstraße 110, A-1100 Wien

T. +43(0)1 489 3961-0

F. +43(0)1 489 3961-7

[mail@szabo-scandic.com](mailto:mail@szabo-scandic.com)

[www.szabo-scandic.com](http://www.szabo-scandic.com)

[linkedin.com/company/szaboscandic](https://www.linkedin.com/company/szaboscandic) 

## DCN monoclonal antibody (M02), clone 2B5-G5

Catalog # : H00001634-M02

規格 : [ 100 ug ]

[List All](#)

### Specification

**Product Description:** Mouse monoclonal antibody raised against a full-length recombinant DCN.

**Immunogen:** DCN (AAH05322, 1 a.a. ~ 359 a.a) full-length recombinant protein with GST tag. MW of the GST tag alone is 26 KDa.

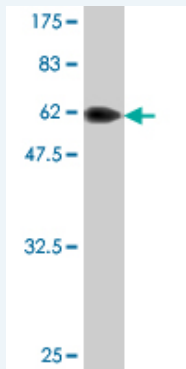
**Sequence:** MKATIILLLLAQVSWAGPFQQRGLFDFMLEDEASGIGPEVPDDRDFEPS  
LGPVCPFRQCCHLRVWQCSDLGLDKVPKDLPPDTTLLDLQNNKITEIKDG  
DFKNLKNLHALILVNNKISKVSPGAFTPLVKLERLYL SKNQLKELPEKMPKT  
LQELRAHENEITKVRKVTFNGLNQMIVIELGTNPLKSSGIENGAFQGMKKL  
SYIRIADTNTSIPQGLPSSLTELHLDGKNISRVDASLKGLNNLAKLGLSFN  
SISAVDNGSLANTPHLRELHLDNNKLTRVPGGLAEHKYIQVVYLHNNNISV  
VGSSDFCPPGHNTKKASYSGVSLFSNPVQYWEIQPSTFRVCVYVRSAIL  
QNLGNYK

**Host:** Mouse

**Reactivity:** Human

**Isotype:** IgG1 Kappa

**Quality Control Testing:** Antibody Reactive Against Recombinant Protein.



Western Blot detection against Immunogen (65.23 KDa) .

**Storage Buffer:** In 1x PBS, pH 7.4

**Storage Instruction:** Store at -20°C or lower. Aliquot to avoid repeated freezing and thawing.

**MSDS:** [Download](#)

**Datasheet:** [Download](#)

### Applications

**Western Blot (Recombinant protein)**

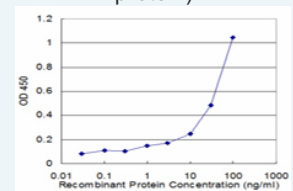
[Protocol Download](#)

**Sandwich ELISA (Recombinant protein)**

### Application Image

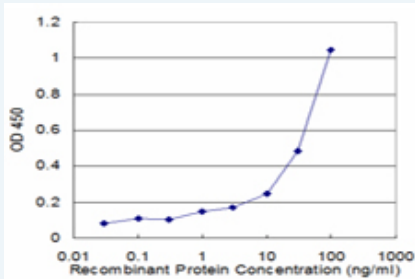
Western Blot (Recombinant protein)

Sandwich ELISA (Recombinant protein)




[enlarge](#)

ELISA



Detection limit for recombinant GST tagged DCN is approximately 1ng/ml as a capture antibody.

 [Protocol Download](#)

## ELISA

### Gene Information

Entrez GeneID: [1634](#)

GeneBank [BC005322](#)

Accession#:

Protein [AAH05322](#)

Accession#:

Gene Name: DCN

Gene Alias: CSCD,DSPG2,PG40,PGII,PGS2,SLRR1B

Gene decorin

Description:

Omim ID: [125255](#), [610048](#)

Gene Ontology: [Hyperlink](#)

**Gene Summary:** The protein encoded by this gene is a small cellular or pericellular matrix proteoglycan that is closely related in structure to biglycan protein. The encoded protein and biglycan are thought to be the result of a gene duplication. This protein is a component of connective tissue, binds to type I collagen fibrils, and plays a role in matrix assembly. It contains one attached glycosaminoglycan chain. This protein is capable of suppressing the growth of various tumor cell lines. There are multiple alternatively spliced transcript variants known for this gene. This gene is a candidate gene for Marfan syndrome. [provided by RefSeq]

**Other Designations:** bone proteoglycan II,decorin proteoglycan,dermatan sulphate proteoglycans II,proteoglycan core protein,small leucine-rich protein 1B

### Gene Pathway

[TGF-beta signaling pathway](#)

### Related Disease

[Breast cancer](#) [Breast Neoplasms](#) [Cardiovascular Diseases](#) [Diabetes Mellitus, Type 1](#) [Diabetes Mellitus, Type 2](#) [Diabetic Nephropathies](#) [Disease Progression](#) [Edema](#) [Genetic Predisposition to Disease](#) [Myopia](#) [Myopia, Degenerative](#) [Ovarian Neoplasms](#) [Proteinuria](#)