



# SZABO SCANDIC

Part of Europa Biosite

## Produktinformation



Forschungsprodukte & Biochemikalien



Zellkultur & Verbrauchsmaterial



Diagnostik & molekulare Diagnostik



Laborgeräte & Service

Weitere Information auf den folgenden Seiten!  
See the following pages for more information!



### Lieferung & Zahlungsart

siehe unsere [Liefer- und Versandbedingungen](#)

### Zuschläge

- Mindermengenzuschlag
- Trockeneiszuschlag
- Gefahrgutzuschlag
- Expressversand

### SZABO-SCANDIC HandelsgmbH

Quellenstraße 110, A-1100 Wien

T. +43(0)1 489 3961-0

F. +43(0)1 489 3961-7

[mail@szabo-scandic.com](mailto:mail@szabo-scandic.com)

[www.szabo-scandic.com](http://www.szabo-scandic.com)

[linkedin.com/company/szaboscandic](https://www.linkedin.com/company/szaboscandic) 

## ACE monoclonal antibody (M01), clone 6A4

Catalog # : H00001636-M01

規格 : [ 100 ug ]

[List All](#)

### Specification

**Product Description:** Mouse monoclonal antibody raised against a partial recombinant ACE.

**Immunogen:** ACE (AAH36375, 592 a.a. ~ 701 a.a) partial recombinant protein with GST tag. MW of the GST tag alone is 26 KDa.

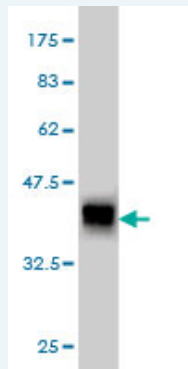
**Sequence:** RLATAMKLGFSRPWPEAMLITGQPMSASAMLSYFKPLLDWLRTENE  
LHGEKLGWPQYNWTPNSDDFYNETETKIFLQFYDQGTGIWDHGAPHLPP  
SQARGTREAPVYM

**Host:** Mouse

**Reactivity:** Human

**Isotype:** IgG1 Kappa

**Quality Control Testing:** Antibody Reactive Against Recombinant Protein.



Western Blot detection against Immunogen (37.73 KDa) .

**Storage Buffer:** In 1x PBS, pH 7.4

**Storage Instruction:** Store at -20°C or lower. Aliquot to avoid repeated freezing and thawing.

**MSDS:** [Download](#)

**Datasheet:** [Download](#)

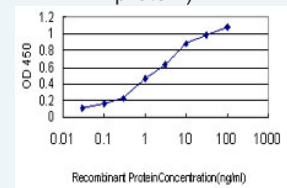
### Publication Reference

1. [Phosphorylation of the Eukaryotic Translation Initiation Factor 4E-Transporter \(4E-T\) by c-Jun N-Terminal Kinase Promotes Stress-Dependent P-Body Assembly.](#)  
Cargnello M, Tcherkezian J, Dorn JF, Huttlin EL, Maddox PS, Gygi SP, Roux PP. Mol Cell Biol. 2012 Nov;32(22):4572-84. doi: 10.1128/MCB.00544-12. Epub 2012 Sep 10.
2. [The dual organization of P-bodies revealed by immunoelectron microscopy and electron tomography.](#)  
Cougot N, Cavalier A, Thomas D, Gillet R. J Mol Biol. 2012 Apr 3. [Epub ahead of print]
3. [Drosophila genome-wide RNAi screen identifies multiple regulators of HIF-dependent transcription in hypoxia.](#)

### Application Image

Western Blot (Recombinant protein)

Sandwich ELISA (Recombinant protein)



[enlarge](#)

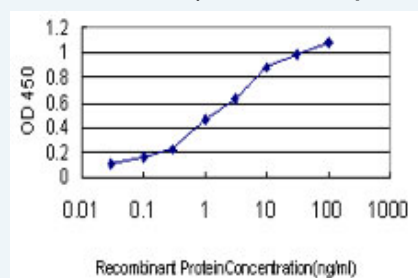
ELISA

## Applications

### Western Blot (Recombinant protein)

 [Protocol Download](#)

### Sandwich ELISA (Recombinant protein)



Detection limit for recombinant GST tagged ACE is approximately 0.03ng/ml as a capture antibody.

 [Protocol Download](#)

## ELISA

### Gene Information

Entrez GeneID: [1636](#)

GeneBank [BC036375](#)

Accession#:

Protein [AAH36375](#)

Accession#:

Gene Name: ACE

Gene Alias: ACE1,CD143,DCP,DCP1,MGC26566

Gene Description: angiotensin I converting enzyme (peptidyl-dipeptidase A) 1

Description:

Omim ID: [104300](#), [106180](#), [267430](#), [603933](#)

Gene Ontology: [Hyperlink](#)

**Gene Summary:** This gene encodes an enzyme involved in catalyzing the conversion of angiotensin I into a physiologically active peptide angiotensin II. Angiotensin II is a potent vasopressor and aldosterone-stimulating peptide that controls blood pressure and fluid-electrolyte balance. This enzyme plays a key role in the renin-angiotensin system. Many studies have associated the presence or absence of a 287 bp Alu repeat element in this gene with the levels of circulating enzyme or cardiovascular pathophysiologies. Two most abundant alternatively spliced variants of this gene encode two isozymes - the somatic form and the testicular form that are equally active. Multiple additional alternatively spliced variants have been identified but their full length nature has not been determined. [provided by RefSeq]

**Other Designations:** CD143 antigen,angiotensin I converting enzyme,angiotensin converting enzyme, somatic isoform,carboxycathepsin,dipeptidyl carboxypeptidase 1,kininase II,peptidase P,peptidyl-dipeptidase A,testicular ECA

### Gene Pathway

[Hypertrophic cardiomyopathy \(HCM\) Renin-angiotensin system](#)

## Related Disease

[Abortion](#), [Habitual Abortion](#), [Spontaneous Accelerated Idioventricular Rhythm](#) [Acidosis](#)  
[Acromegaly](#) [Acute Disease](#) [Adenocarcinoma](#) [Adenoma](#) [Adrenal Gland Neoplasms](#)  
[Aggressive Periodontitis](#) [Albuminuria](#) [Alcohol](#) [Amnestic Disorder](#) [Alcoholism](#)  
[Altitude Sickness](#) [Alzheimer Disease](#) [Alzheimer disease](#) [Amnesia](#) [Anemia](#)  
[Anemia](#), [Sickle Cell](#)

[... see more](#)

---

[服務條款](#) | [隱私權政策](#) | [著作及商標](#) | [網站地圖](#)

©2016 亞諾法生技股份有限公司 Abnova Corporation. 版權所有.