



SZABO SCANDIC

Part of Europa Biosite

Produktinformation



Forschungsprodukte & Biochemikalien



Zellkultur & Verbrauchsmaterial



Diagnostik & molekulare Diagnostik



Laborgeräte & Service

Weitere Information auf den folgenden Seiten!
See the following pages for more information!



Lieferung & Zahlungsart

siehe unsere [Liefer- und Versandbedingungen](#)

Zuschläge

- Mindermengenzuschlag
- Trockeneiszuschlag
- Gefahrgutzuschlag
- Expressversand

SZABO-SCANDIC HandelsgmbH

Quellenstraße 110, A-1100 Wien

T. +43(0)1 489 3961-0

F. +43(0)1 489 3961-7

mail@szabo-scandic.com

www.szabo-scandic.com

[linkedin.com/company/szaboscandic](https://www.linkedin.com/company/szaboscandic) 

DCT purified MaxPab rabbit polyclonal antibody (D01P) MaxPab®

Catalog # : H00001638-D01P

規格 : [100 ug]

[List All](#)

Specification

Product Description: Rabbit polyclonal antibody raised against a full-length human DCT protein.

Immunogen: DCT (NP_001913.2, 1 a.a. ~ 519 a.a) full-length human protein.

Sequence:
 MSPLWWGFLLSCLGCKILPGAQQQFPRVCMTVDSL VNKECCPRLGAES
 ANVCGSQQGRGQCTEVRADTRPWSGPYILRNQDDRELWPRKFFHRTC
 KCTGNFAGYNCGDCKFGWTGPNCERKKPPVIRQNIHSLSPQEREQFLG
 ALDLAKKRVHPDYVITQHWLGLLGPNGTQPQFANCSVYDFFVWLHYYS
 VRDTLLGPRPYRAIDFSHQGPAFVTVHRYHLLCLERDLQRLIGNESFA
 LPYWNFATGRNECDVCTDQLFGAARPDDPTLISRNSRFSSWETVCDL
 DDYNHLVTLNCGTYEGLLRNQMGGRNSMKLPTLKDIRDCLSLQKFDNPP
 FFQNSTFSFRNALEGFADKADGTLDSQVMSLHNLVHSFLNGTNALPHSAA
 NDPIFVVLHSFTDAIFDEWMKRFNPPADAWPQELAPIGHNRMYNMVPPFP
 PVTNEELFLTSDQLGYSYIDL PVSVEETPGWPTLLVVMGTLVALVGLF
 VLLAFLQYRRRLRKGYTPLMETHLSSKRYTEEA

Host: Rabbit

Reactivity: Human

Quality Control Testing: Antibody reactive against mammalian transfected lysate.

Storage Buffer: In 1x PBS, pH 7.4

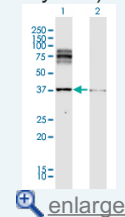
Storage Instruction: Store at -20°C or lower. Aliquot to avoid repeated freezing and thawing.

MSDS: [Download](#)

Datasheet: [Download](#)

Application Image

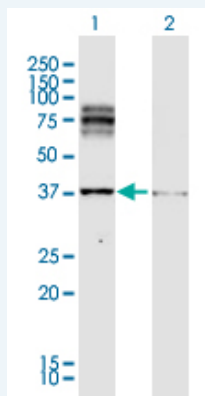
Western Blot (Transfected lysate)



[enlarge](#)

Applications

Western Blot (Transfected lysate)



Western Blot analysis of DCT expression in transfected 293T cell line (H00001638-T03) by DCT MaxPab polyclonal antibody.

Lane 1: DCT transfected lysate(59.10 KDa).

Lane 2: Non-transfected lysate.

 [Protocol Download](#)

Gene Information

Entrez GeneID: [1638](#)

**GeneBank
Accession#:** [NM_001922.2](#)

**Protein
Accession#:** [NP_001913.2](#)

Gene Name: DCT

Gene Alias: TYRP2

**Gene
Description:** dopachrome tautomerase (dopachrome delta-isomerase, tyrosine-related protein 2)

Omim ID: [191275](#)

Gene Ontology: [Hyperlink](#)

**Other
Designations:** Dopachrome tautomerase (dopachrome delta-isomerase; tyrosinase-related protein 2), OTTHUMP00000018553

Gene Pathway

[Melanogenesis](#) [Metabolic pathways](#) [Tyrosine metabolism](#)

Related Disease

[Intervertebral Disk Displacement](#)

[服務條款](#) | [隱私權政策](#) | [著作及商標](#) | [網站地圖](#)

©2016 亞諾法生技股份有限公司 Abnova Corporation. 版權所有.