



# SZABO SCANDIC

Part of Europa Biosite

## Produktinformation



Forschungsprodukte & Biochemikalien



Zellkultur & Verbrauchsmaterial



Diagnostik & molekulare Diagnostik



Laborgeräte & Service

Weitere Information auf den folgenden Seiten!  
See the following pages for more information!



### Lieferung & Zahlungsart

siehe unsere [Liefer- und Versandbedingungen](#)

### Zuschläge

- Mindermengenzuschlag
- Trockeneiszuschlag
- Gefahrgutzuschlag
- Expressversand

### SZABO-SCANDIC HandelsgmbH

Quellenstraße 110, A-1100 Wien

T. +43(0)1 489 3961-0

F. +43(0)1 489 3961-7

[mail@szabo-scandic.com](mailto:mail@szabo-scandic.com)

[www.szabo-scandic.com](http://www.szabo-scandic.com)

[linkedin.com/company/szaboscandic](https://www.linkedin.com/company/szaboscandic) 

## DCX 293T Cell Transient Overexpression Lysate(Denatured)

Catalog # : H00001641-T01

規格 : [ 100 uL ]

[List All](#)

### Specification

**Transfected Cell Line:** 293T

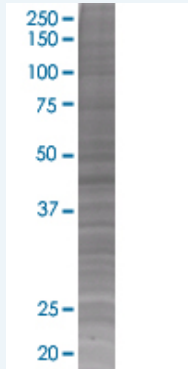
**Plasmid:** pCMV-DCX full-length

**Host:** Human

**Theoretical MW (kDa):** 40

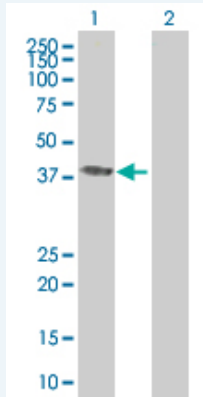
**Quality Control Testing:** Transient overexpression cell lysate was tested with Anti-DCX antibody (H00001641-B01) by Western Blots.

#### SDS-PAGE Gel



DCX transfected lysate

#### Western Blot



Lane 1: DCX transfected lysate ( 40 KDa).

Lane 2: Non-transfected lysate.

**Storage Buffer:** 1X Sample Buffer (50 mM Tris-HCl, 2% SDS, 10% glycerol, 300 mM 2-mercaptoethanol, 0.01% Bromophenol blue)

**Storage Instruction:** Store at -80°C. Aliquot to avoid repeated freezing and thawing.

**MSDS:**  [Download](#)

### Applications

### Application Image

Western Blot

## Western Blot

### Gene Information

Entrez GeneID: [1641](#)

GeneBank Accession#: [NM\\_178151](#)

Protein Accession#: [NP\\_835364](#)

Gene Name: DCX

Gene Alias: DBCN,DC,LISX,SCLH,XLIS

Gene Description: doublecortin

Omim ID: [300067](#), [300121](#)

Gene Ontology: [Hyperlink](#)

**Gene Summary:** In the developing cortex, cortical neurons must migrate over long distances to reach the site of their final differentiation. The protein encoded by this gene is a cytoplasmic protein which appears to direct neuronal migration by regulating the organization and stability of microtubules. The encoded protein contains two doublecortin domains, which bind microtubules. In addition, the encoded protein interacts with LIS1, the regulatory gamma subunit of platelet activating factor acetylhydrolase, and this interaction is important to proper microtubule function in the developing cortex. Mutations in this gene are a cause of X-linked lissencephaly. Multiple transcript variants encoding at least three different isoforms have been found for this gene. [provided by RefSeq]

Other Designations: OTTHUMP00000062892,doublecortex,doublin,lissencephalin-X

### Related Disease

[Autistic Disorder](#) [Epilepsy](#) [Genetic Predisposition to Disease](#)