



# SZABO SCANDIC

Part of Europa Biosite

## Produktinformation



Forschungsprodukte & Biochemikalien



Zellkultur & Verbrauchsmaterial



Diagnostik & molekulare Diagnostik



Laborgeräte & Service

Weitere Information auf den folgenden Seiten!  
See the following pages for more information!



### Lieferung & Zahlungsart

siehe unsere [Liefer- und Versandbedingungen](#)

### Zuschläge

- Mindermengenzuschlag
- Trockeneiszuschlag
- Gefahrgutzuschlag
- Expressversand

### SZABO-SCANDIC HandelsgmbH

Quellenstraße 110, A-1100 Wien

T. +43(0)1 489 3961-0

F. +43(0)1 489 3961-7

[mail@szabo-scandic.com](mailto:mail@szabo-scandic.com)

[www.szabo-scandic.com](http://www.szabo-scandic.com)

[linkedin.com/company/szaboscandic](https://www.linkedin.com/company/szaboscandic) 

## DDB1 polyclonal antibody (A01)

Catalog # : H00001642-A01

規格 : [ 50 uL ]

[List All](#)

### Specification

**Product Description:** Mouse polyclonal antibody raised against a partial recombinant DDB1.

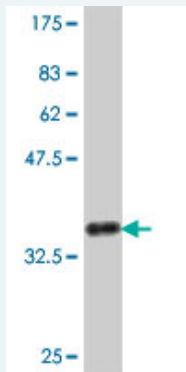
**Immunogen:** DDB1 (NP\_001914, 1044 a.a. ~ 1140 a.a) partial recombinant protein with GST tag.

**Sequence:** SESWYNLLLDMQNRLNKVIKSVGKIEHSFWRSFHTERKTEPATGFIDGDL IESFLDISRPKMQEVVANLQYDDGSGMKREATADDLIKVVEELTRIH

**Host:** Mouse

**Reactivity:** Human

**Quality Control Testing:** Antibody Reactive Against Recombinant Protein.



Western Blot detection against Immunogen (36.78 KDa) .

**Storage Buffer:** 50 % glycerol

**Storage Instruction:** Store at -20°C or lower. Aliquot to avoid repeated freezing and thawing.

**MSDS:** [Download](#)

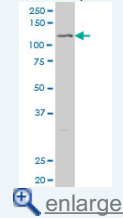
**Datasheet:** [Download](#)

### Applications

Western Blot (Cell lysate)

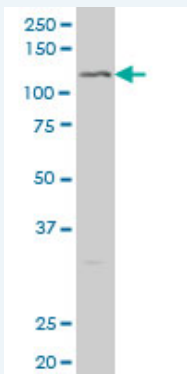
### Application Image

Western Blot (Cell lysate)




Western Blot (Recombinant protein)

ELISA



DDB1 polyclonal antibody (A01), Lot # 060109JC01 Western Blot analysis of DDB1 expression in SJCRH30 ( Cat # L027V1 ).

 [Protocol Download](#)

---

#### Western Blot (Recombinant protein)

 [Protocol Download](#)

---

#### ELISA

---

#### Gene Information

**Entrez GeneID:** [1642](#)

**GeneBank** [NM\\_001923](#)

**Accession#:**

**Protein** [NP\\_001914](#)

**Accession#:**

**Gene Name:** DDB1

**Gene Alias:** DDBA,UV-DDB1,XAP1,XPCE,XPE,XPE-BF

**Gene** damage-specific DNA binding protein 1, 127kDa

**Description:**

**Omim ID:** [600045](#)

**Gene Ontology:** [Hyperlink](#)

**Gene Summary:** This gene encodes the large subunit of DNA damage-binding protein which is a heterodimer composed of a large and a small subunit. This protein functions in nucleotide-excision repair. Its defective activity causes the repair defect in the patients with xeroderma pigmentosum complementation group E (XPE). However, it remains for mutation analysis to demonstrate whether the defect in XPE patients is in this gene or the gene encoding the small subunit. In addition, Best vitelliform macular dystrophy is mapped to the same region as this gene on 11q, but no sequence alternations of this gene are demonstrated in Best disease patients. [provided by RefSeq]

**Other Designations:** DDB p127 subunit,damage-specific DNA binding protein 1,damage-specific DNA binding protein 1 (127kD)

---

#### Gene Pathway

[Nucleotide excision repair](#) [Ubiquitin mediated proteolysis](#)