



# SZABO SCANDIC

Part of Europa Biosite

## Produktinformation



Forschungsprodukte & Biochemikalien



Zellkultur & Verbrauchsmaterial



Diagnostik & molekulare Diagnostik



Laborgeräte & Service

Weitere Information auf den folgenden Seiten!  
See the following pages for more information!



### Lieferung & Zahlungsart

siehe unsere [Liefer- und Versandbedingungen](#)

### Zuschläge

- Mindermengenzuschlag
- Trockeneiszuschlag
- Gefahrgutzuschlag
- Expressversand

### SZABO-SCANDIC HandelsgmbH

Quellenstraße 110, A-1100 Wien

T. +43(0)1 489 3961-0

F. +43(0)1 489 3961-7

[mail@szabo-scandic.com](mailto:mail@szabo-scandic.com)

[www.szabo-scandic.com](http://www.szabo-scandic.com)

[linkedin.com/company/szaboscandic](https://www.linkedin.com/company/szaboscandic) 

## AKR1C1 293T Cell Transient Overexpression Lysate(Denatured)

Catalog # : H00001645-T02

規格 : [ 100 uL ]

[List All](#)

### Specification

**Transfected Cell Line:** 293T

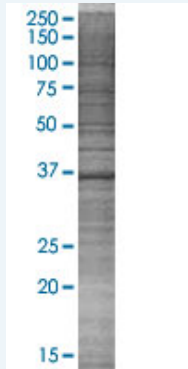
**Plasmid:** pCMV-AKR1C1 full-length

**Host:** Human

**Theoretical MW (kDa):** 36.8

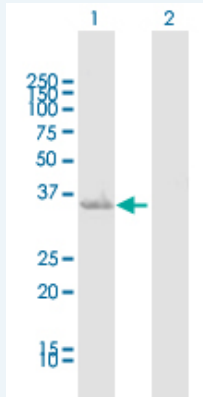
**Quality Control Testing:** Transient overexpression cell lysate was tested with Anti-AKR1C1 antibody ([H00001645-D01](#)) by Western Blots.

#### SDS-PAGE Gel



AKR1C1 transfected lysate.

#### Western Blot



Lane 1: AKR1C1 transfected lysate ( 36.8 KDa)

Lane 2: Non-transfected lysate.

**Storage Buffer:** 1X Sample Buffer (50 mM Tris-HCl, 2% SDS, 10% glycerol, 300 mM 2-mercaptoethanol, 0.01% Bromophenol blue)

**Storage Instruction:** Store at -80°C. Aliquot to avoid repeated freezing and thawing.

**MSDS:**  [Download](#)

### Applications

## Western Blot

### Gene Information

Entrez GeneID: [1645](#)

GeneBank Accession#: [NM\\_001353.5](#)

Protein Accession#: [NP\\_001344.2](#)

Gene Name: AKR1C1

Gene Alias: 2-ALPHA-HSD,20-ALPHA-HSD,C9,DD1,DDH,DDH1,H-37,HAKRC,MBAB,MGC8954

Gene Description: aldo-keto reductase family 1, member C1 (dihydrodiol dehydrogenase 1; 20-alpha (3-alpha)-hydroxysteroid dehydrogenase)

Omim ID: [600449](#)

Gene Ontology: [Hyperlink](#)

**Gene Summary:** This gene encodes a member of the aldo/keto reductase superfamily, which consists of more than 40 known enzymes and proteins. These enzymes catalyze the conversion of aldehydes and ketones to their corresponding alcohols by utilizing NADH and/or NADPH as cofactors. The enzymes display overlapping but distinct substrate specificity. This enzyme catalyzes the reaction of progesterone to the inactive form 20-alpha-hydroxy-progesterone. This gene shares high sequence identity with three other gene members and is clustered with those three genes at chromosome 10p15-p14. [provided by RefSeq]

**Other Designations:** 20 alpha-hydroxysteroid dehydrogenase,OTTHUMP00000018992,aldo-keto reductase C,aldo-keto reductase family 1, member C1,chlordecone reductase homolog,dihydrodiol dehydrogenase 1,dihydrodiol dehydrogenase isoform DD1,hepatic dihydrodiol dehydrogenase,trans-

### Gene Pathway

[Metabolism of xenobiotics by cytochrome P450](#)

### Related Disease

[Alzheimer Disease](#) [Breast Neoplasms](#) [Genetic Predisposition to Disease](#) [Lung Neoplasms](#) [Lymphoma, Non-Hodgkin](#)