



# SZABO SCANDIC

Part of Europa Biosite

## Produktinformation



Forschungsprodukte & Biochemikalien



Zellkultur & Verbrauchsmaterial



Diagnostik & molekulare Diagnostik



Laborgeräte & Service

Weitere Information auf den folgenden Seiten!  
See the following pages for more information!



### Lieferung & Zahlungsart

siehe unsere [Liefer- und Versandbedingungen](#)

### Zuschläge

- Mindermengenzuschlag
- Trockeneiszuschlag
- Gefahrgutzuschlag
- Expressversand

### SZABO-SCANDIC HandelsgmbH

Quellenstraße 110, A-1100 Wien

T. +43(0)1 489 3961-0

F. +43(0)1 489 3961-7

[mail@szabo-scandic.com](mailto:mail@szabo-scandic.com)

[www.szabo-scandic.com](http://www.szabo-scandic.com)

[linkedin.com/company/szaboscandic](https://www.linkedin.com/company/szaboscandic) 

## DDOST monoclonal antibody (M06), clone 2D7

Catalog # : H00001650-M06

規格 : [ 100 ug ]

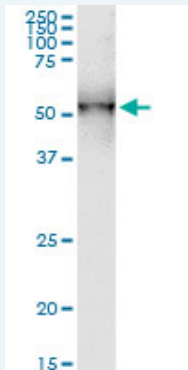
[List All](#)

### Specification

<b>Product Description:</b>	Mouse monoclonal antibody raised against a partial recombinant DDOST.
<b>Immunogen:</b>	DDOST (NP_005207, 328 a.a. ~ 427 a.a) partial recombinant protein with GST tag. MW of the GST tag alone is 26 KDa.
<b>Sequence:</b>	TDLVEYSIMIQQLSNGKWW/PFDGDDIQLEFVRIDPFVRTFLKKGKYSVQFKLPDVYGVFQFKVDYNRLGYTHLYSSTQVSVRPLQHTQYERFIPSAY P
<b>Host:</b>	Mouse
<b>Reactivity:</b>	Human
<b>Isotype:</b>	IgG2a Kappa
<b>Quality Control Testing:</b>	Antibody Reactive Against Recombinant Protein.
<b>Storage Buffer:</b>	In 1x PBS, pH 7.4
<b>Storage Instruction:</b>	Store at -20°C or lower. Aliquot to avoid repeated freezing and thawing.
<b>MSDS:</b>	<a href="#">Download</a>
<b>Datasheet:</b>	<a href="#">Download</a>

### Applications

#### Western Blot (Tissue lysate)



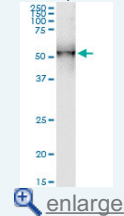
DDOST monoclonal antibody (M06), clone 2D7. Western Blot analysis of DDOST expression in human stomach.

[Protocol Download](#)

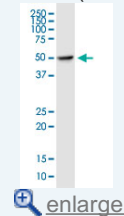
#### Western Blot (Cell lysate)

### Application Image

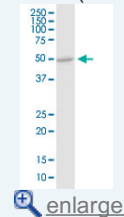
#### Western Blot (Tissue lysate)



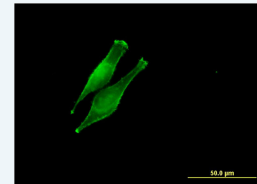
#### Western Blot (Cell lysate)



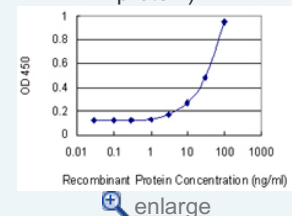
#### Western Blot (Cell lysate)



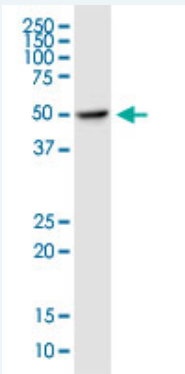
#### Immunofluorescence



#### Sandwich ELISA (Recombinant protein)



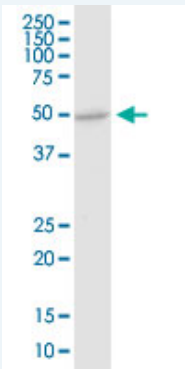
ELISA



DDOST monoclonal antibody (M06), clone 2D7. Western Blot analysis of DDOST expression in HepG2.

[Protocol Download](#)

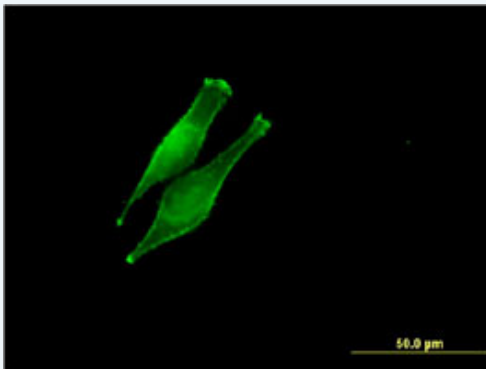
#### Western Blot (Cell lysate)



DDOST monoclonal antibody (M06), clone 2D7. Western Blot analysis of DDOST expression in COLO 320 HSR.

[Protocol Download](#)

#### Immunofluorescence

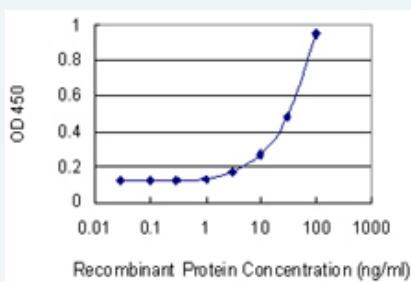


[enlarge this image](#)

Immunofluorescence of monoclonal antibody to DDOST on HeLa cell . [antibody concentration 10 ug/ml]

[Protocol Download](#)

#### Sandwich ELISA (Recombinant protein)



Detection limit for recombinant GST tagged DDOST is 1 ng/ml as a capture antibody.

[Protocol Download](#)

#### ELISA

## Gene Information

---

**Entrez GeneID:** [1650](#)

---

**GeneBank  
Accession#:** [NM\\_005216](#)

---

**Protein  
Accession#:** [NP\\_005207](#)

---

**Gene Name:** DDOST

---

**Gene Alias:** AGE-R1,KIAA0115,MGC2191,OK/SW-cl.45,OST,OST48,WBP1

---

**Gene  
Description:** dolichyl-diphosphooligosaccharide-protein glycosyltransferase

---

**Omim ID:** [602202](#)

---

**Gene Ontology:** [Hyperlink](#)

---

**Gene Summary:** This gene encodes a component of the oligosaccharyltransferase complex which catalyzes the transfer of high-mannose oligosaccharides to asparagine residues on nascent polypeptides in the lumen of the rough endoplasmic reticulum. The protein complex co-purifies with ribosomes. The product of this gene is also implicated in the processing of advanced glycation endproducts (AGEs), which form from non-enzymatic reactions between sugars and proteins or lipids and are associated with aging and hyperglycemia. [provided by RefSeq]

---

**Other  
Designations:** OTTHUMP00000002882,advanced glycation endproduct receptor 1,dolichyl-diphosphooligosaccharide-protein glycosyltransferase 48 kDa subunit,dolichyl-diphosphooligosaccharide-protein glycotransferase,oligosaccharyltransferase 48 kDa subunit

---

## Gene Pathway

---

[Metabolic pathways](#) [N-Glycan biosynthesis](#)

## Related Disease

---

[Diabetes Mellitus, Type 1](#) [Diabetic Nephropathies](#) [Disease Progression](#)  
[Disease Susceptibility](#) [Genetic Predisposition to Disease](#) [HIV Infections](#)

---

[服務條款](#) | [隱私權政策](#) | [著作及商標](#) | [網站地圖](#)

©2016 亞諾法生技股份有限公司 Abnova Corporation. 版權所有.