



# SZABO SCANDIC

Part of Europa Biosite

## Produktinformation



Forschungsprodukte & Biochemikalien



Zellkultur & Verbrauchsmaterial



Diagnostik & molekulare Diagnostik



Laborgeräte & Service

Weitere Information auf den folgenden Seiten!  
See the following pages for more information!



### Lieferung & Zahlungsart

siehe unsere [Liefer- und Versandbedingungen](#)

### Zuschläge

- Mindermengenzuschlag
- Trockeneiszuschlag
- Gefahrgutzuschlag
- Expressversand

### SZABO-SCANDIC HandelsgmbH

Quellenstraße 110, A-1100 Wien

T. +43(0)1 489 3961-0

F. +43(0)1 489 3961-7

[mail@szabo-scandic.com](mailto:mail@szabo-scandic.com)

[www.szabo-scandic.com](http://www.szabo-scandic.com)

[linkedin.com/company/szaboscandic](https://www.linkedin.com/company/szaboscandic) 

## DDT purified MaxPab rabbit polyclonal antibody (D01P) MaxPab®

Catalog # : H00001652-D01P

規格 : [ 100 ug ]

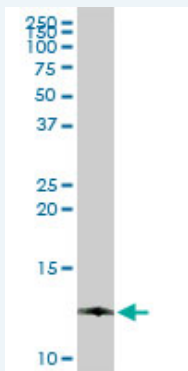
[List All](#)

### Specification

<b>Product Description:</b>	Rabbit polyclonal antibody raised against a full-length human DDT protein.
<b>Immunogen:</b>	DDT (NP_001346.1, 1 a.a. ~ 118 a.a) full-length human protein.
<b>Sequence:</b>	MPFLELDTNLPANRVPAGLEKRLCAAASILGKPADRVNVTVRPGLAMAL SGSTEPCAQLSISSIGVVGTAEDNRSHSAHFFFLTKEALGQDRILIRFF PLESWQIGKIGTVMFTL
<b>Host:</b>	Rabbit
<b>Reactivity:</b>	Human
<b>Quality Control Testing:</b>	Antibody reactive against mammalian transfected lysate.
<b>Storage Buffer:</b>	In 1x PBS, pH 7.4
<b>Storage Instruction:</b>	Store at -20°C or lower. Aliquot to avoid repeated freezing and thawing.
<b>MSDS:</b>	<a href="#">Download</a>
<b>Datasheet:</b>	<a href="#">Download</a>

### Applications

#### Western Blot (Tissue lysate)



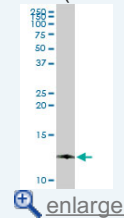
DDT MaxPab rabbit polyclonal antibody. Western Blot analysis of DDT expression in human spleen.

[Protocol Download](#)

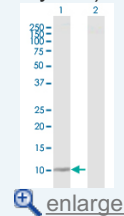
#### Western Blot (Transfected lysate)

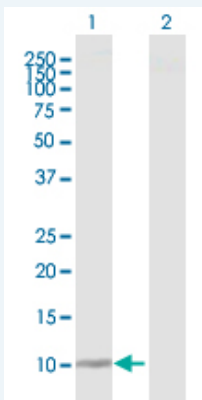
### Application Image

#### Western Blot (Tissue lysate)



#### Western Blot (Transfected lysate)






Western Blot analysis of DDT expression in transfected 293T cell line ([H00001652-T02](#)) by DDT MaxPab polyclonal antibody.

Lane 1: DDT transfected lysate(12.70 KDa).

Lane 2: Non-transfected lysate.

 [Protocol Download](#)

### Gene Information

**Entrez GeneID:** [1652](#)

**GeneBank** [NM\\_001355](#)

**Accession#:**

**Protein** [NP\\_001346.1](#)

**Accession#:**

**Gene Name:** DDT

**Gene Alias:** DDCT

**Gene** D-dopachrome tautomerase

**Description:**

**Omim ID:** [602750](#)

**Gene Ontology:** [Hyperlink](#)

**Gene Summary:** D-dopachrome tautomerase converts D-dopachrome into 5,6-dihydroxyindole. The DDT gene is related to the migration inhibitory factor (MIF) in terms of sequence, enzyme activity, and gene structure. DDT and MIF are closely linked on chromosome 22. [provided by RefSeq]

**Other** D-dopachrome decarboxylase

**Designations:**

### Related Disease

[Cardiovascular Diseases](#) [Diabetes Mellitus, Type 2](#) [Edema](#)