



SZABO SCANDIC

Part of Europa Biosite

Produktinformation



Forschungsprodukte & Biochemikalien



Zellkultur & Verbrauchsmaterial



Diagnostik & molekulare Diagnostik



Laborgeräte & Service

Weitere Information auf den folgenden Seiten!
See the following pages for more information!



Lieferung & Zahlungsart

siehe unsere [Liefer- und Versandbedingungen](#)

Zuschläge

- Mindermengenzuschlag
- Trockeneiszuschlag
- Gefahrgutzuschlag
- Expressversand

SZABO-SCANDIC HandelsgmbH

Quellenstraße 110, A-1100 Wien

T. +43(0)1 489 3961-0

F. +43(0)1 489 3961-7

mail@szabo-scandic.com

www.szabo-scandic.com

[linkedin.com/company/szaboscandic](https://www.linkedin.com/company/szaboscandic) 

DDT monoclonal antibody (M01), clone 1G1

Catalog # : H00001652-M01

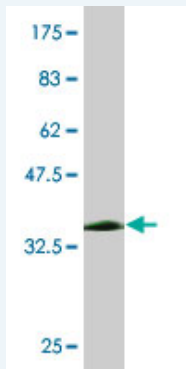
規格 : [100 ug]

[List All](#)

Specification

Product Description:	Mouse monoclonal antibody raised against a full length recombinant DDT.
Immunogen:	DDT (AAH05971, 1 a.a. ~ 118 a.a) full-length recombinant protein with GST tag. MW of the GST tag alone is 26 KDa.
Sequence:	MPFLELDTNLPANRVPAGLEKRLCAAASILGKPADRVNVTVRPGLAMAL SGSTEPCAQLSISSIGWVGTAEDNRSHSAHFFFLTKEALGQDRILIRFF PLESWQIGKIGTVMTFL
Host:	Mouse
Reactivity:	Human
Isotype:	IgG2b kappa

Quality Control Testing: Antibody Reactive Against Recombinant Protein.



Western Blot detection against Immunogen (38.72 KDa) .

Storage Buffer: In 1x PBS, pH 7.4

Storage Instruction: Store at -20°C or lower. Aliquot to avoid repeated freezing and thawing.

MSDS: [Download](#)

Datasheet: [Download](#)

Publication Reference

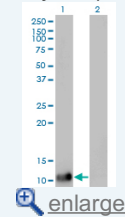
1. D-dopachrome tautomerase is a candidate for key proteins to protect the rat liver damaged by carbon tetrachloride.
Hiyoshi M, Konishi H, Uemura H, Matsuzaki H, Tsukamoto H, Sugimoto R, Takeda H, Dakeshita S, Kitayama A, Takami H, Sawachika F, Kido H, Arisawa K. *Toxicology*. 2009 Jan 8;255(1-2):6-14. Epub 2008 Sep 27.

Applications

Western Blot (Transfected lysate)

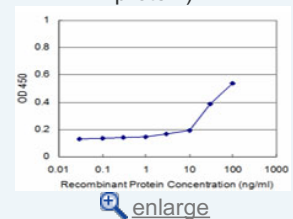
Application Image

Western Blot (Transfected lysate)

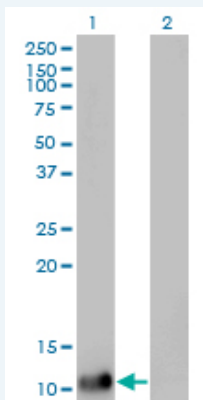


Western Blot (Recombinant protein)

Sandwich ELISA (Recombinant protein)



ELISA



Western Blot analysis of DDT expression in transfected 293T cell line by DDT monoclonal antibody (M01), clone 1G1.

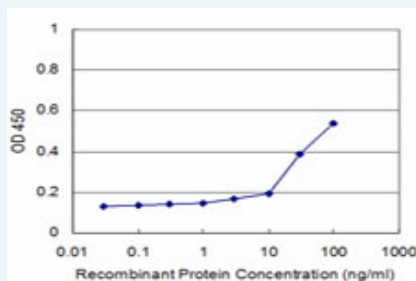
Lane 1: DDT transfected lysate(12.7 KDa).
Lane 2: Non-transfected lysate.

[Protocol Download](#)

Western Blot (Recombinant protein)

[Protocol Download](#)

Sandwich ELISA (Recombinant protein)



Detection limit for recombinant GST tagged DDT is approximately 3ng/ml as a capture antibody.

[Protocol Download](#)

ELISA

Gene Information

Entrez GeneID: [1652](#)

GeneBank [BC005971](#)
Accession#:

Protein [AAH05971](#)
Accession#:

Gene Name: DDT

Gene Alias: DDCT

Gene Description: D-dopachrome tautomerase

Omim ID: [602750](#)

Gene Ontology: [Hyperlink](#)

Gene Summary: D-dopachrome tautomerase converts D-dopachrome into 5,6-dihydroxyindole. The DDT gene is related to the migration inhibitory factor (MIF) in terms of sequence, enzyme activity, and gene structure. DDT and MIF are closely linked on chromosome 22. [provided by RefSeq]

Other D-dopachrome decarboxylase

Designations:

Related Disease

Cardiovascular Diseases Diabetes Mellitus, Type 2 Edema

[服務條款](#) | [隱私權政策](#) | [著作及商標](#) | [網站地圖](#)

©2016 亞諾法生技股份有限公司 Abnova Corporation. 版權所有.