



SZABO SCANDIC

Part of Europa Biosite

Produktinformation



Forschungsprodukte & Biochemikalien



Zellkultur & Verbrauchsmaterial



Diagnostik & molekulare Diagnostik



Laborgeräte & Service

Weitere Information auf den folgenden Seiten!
See the following pages for more information!



Lieferung & Zahlungsart

siehe unsere [Liefer- und Versandbedingungen](#)

Zuschläge

- Mindermengenzuschlag
- Trockeneiszuschlag
- Gefahrgutzuschlag
- Expressversand

SZABO-SCANDIC HandelsgmbH

Quellenstraße 110, A-1100 Wien

T. +43(0)1 489 3961-0

F. +43(0)1 489 3961-7

mail@szabo-scandic.com

www.szabo-scandic.com

[linkedin.com/company/szaboscandic](https://www.linkedin.com/company/szaboscandic) 

DDT 293T Cell Transient Overexpression Lysate(Denatured)

Catalog # : H00001652-T01

規格 : [100 uL]

List All

Specification

Transfected Cell Line: 293T

Plasmid: pCMV-DDT full-length

Host: Human

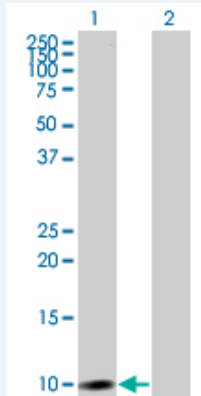
Theoretical MW (kDa): 13.09

Quality Control Testing: Transient overexpression cell lysate was tested with Anti-DDT antibody (H00001652-B01) by Western Blots.

Application Image

Western Blot

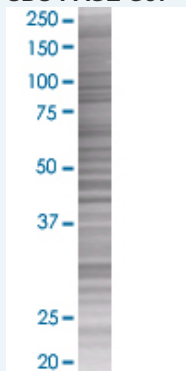
Western Blot



Lane 1: DDT transfected lysate (12.7 KDa)

Lane 2: Non-transfected lysate.

SDS-PAGE Gel



DDT transfected lysate.

Storage Buffer: 1X Sample Buffer (50 mM Tris-HCl, 2% SDS, 10% glycerol, 300 mM 2-mercaptoethanol, 0.01% Bromophenol blue)

Storage Instruction: Store at -80°C. Aliquot to avoid repeated freezing and thawing.

MSDS:  [Download](#)

Applications

Western Blot

Gene Information

Entrez GeneID: [1652](#)

GeneBank Accession#: [NM_001355](#)

Protein Accession#: [NP_001346](#)

Gene Name: DDT

Gene Alias: DDCT

Gene Description: D-dopachrome tautomerase

Omim ID: [602750](#)

Gene Ontology: [Hyperlink](#)

Gene Summary: D-dopachrome tautomerase converts D-dopachrome into 5,6-dihydroxyindole. The DDT gene is related to the migration inhibitory factor (MIF) in terms of sequence, enzyme activity, and gene structure. DDT and MIF are closely linked on chromosome 22. [provided by RefSeq]

Other Designations: D-dopachrome decarboxylase

Related Disease

[Cardiovascular Diseases](#) [Diabetes Mellitus, Type 2](#) [Edema](#)