



# SZABO SCANDIC

Part of Europa Biosite

## Produktinformation



Forschungsprodukte & Biochemikalien



Zellkultur & Verbrauchsmaterial



Diagnostik & molekulare Diagnostik



Laborgeräte & Service

Weitere Information auf den folgenden Seiten!  
See the following pages for more information!



### Lieferung & Zahlungsart

siehe unsere [Liefer- und Versandbedingungen](#)

### Zuschläge

- Mindermengenzuschlag
- Trockeneiszuschlag
- Gefahrgutzuschlag
- Expressversand

### SZABO-SCANDIC HandelsgmbH

Quellenstraße 110, A-1100 Wien

T. +43(0)1 489 3961-0

F. +43(0)1 489 3961-7

[mail@szabo-scandic.com](mailto:mail@szabo-scandic.com)

[www.szabo-scandic.com](http://www.szabo-scandic.com)

[linkedin.com/company/szaboscandic](https://www.linkedin.com/company/szaboscandic) 

## DDX11 polyclonal antibody (A01)

Catalog # : H00001663-A01

規格 : [ 50 uL ]

List All

### Specification

**Product Description:** Mouse polyclonal antibody raised against a partial recombinant DDX11.

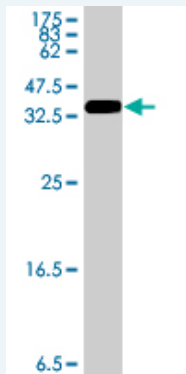
**Immunogen:** DDX11 (AAH11264, 40 a.a. ~ 129 a.a) partial recombinant protein with GST tag.

**Sequence:** GIFESPTGTGKSLSLICGALSWLRDFEQKKREEEARLLETGTGPLHDEK  
DESLCLSSCEGAAGTPRPAGEPAWWTQFVQKKEERDLVDR

**Host:** Mouse

**Reactivity:** Human

**Quality Control Testing:** Antibody Reactive Against Recombinant Protein.



Western Blot detection against Immunogen (36.01 KDa) .

**Storage Buffer:** 50 % glycerol

**Storage Instruction:** Store at -20°C or lower. Aliquot to avoid repeated freezing and thawing.

**MSDS:** [Download](#)

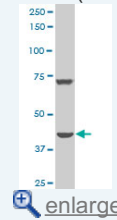
**Datasheet:** [Download](#)

### Applications

Western Blot (Cell lysate)

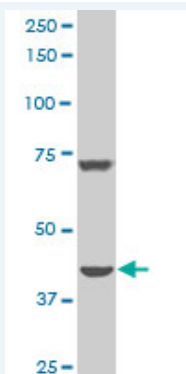
### Application Image

Western Blot (Cell lysate)




Western Blot (Recombinant protein)


ELISA



DDX11 polyclonal antibody (A01), Lot # 051017JC01 Western Blot analysis of DDX11 expression in Y-79 ( Cat # L042V1 ).

 [Protocol Download](#)

#### Western Blot (Recombinant protein)

 [Protocol Download](#)

#### ELISA

#### Gene Information

**Entrez GeneID:** [1663](#)

**GeneBank** [BC011264](#)

**Accession#:**

**Protein** [AAH11264](#)

**Accession#:**

**Gene Name:** DDX11

**Gene Alias:** CHL1,CHLR1,KRG2,MGC133249,MGC9335

**Gene Description:** DEAD/H (Asp-Glu-Ala-Asp/His) box polypeptide 11 (CHL1-like helicase homolog, *S. cerevisiae*)

**Omim ID:** [601150](#)

**Gene Ontology:** [Hyperlink](#)

**Gene Summary:** DEAD box proteins, characterized by the conserved motif Asp-Glu-Ala-Asp (DEAD), are putative RNA helicases. They are implicated in a number of cellular processes involving alteration of RNA secondary structure such as translation initiation, nuclear and mitochondrial splicing, and ribosome and spliceosome assembly. Based on their distribution patterns, some members of this family are believed to be involved in embryogenesis, spermatogenesis, and cellular growth and division. This gene encodes a DEAD box protein, which is an enzyme that possesses both ATPase and DNA helicase activities. This gene is a homolog of the yeast CHL1 gene, and may function to maintain chromosome transmission fidelity and genome stability. Alternative splicing results in multiple transcript variants encoding distinct isoforms. [provided by RefSeq]

**Other Designations:** CHL1-related helicase gene-1,DEAD/H (Asp-Glu-Ala-Asp/His) box polypeptide 11,keratinocyte growth factor-regulated gene 2