



# SZABO SCANDIC

Part of Europa Biosite

## Produktinformation



Forschungsprodukte & Biochemikalien



Zellkultur & Verbrauchsmaterial



Diagnostik & molekulare Diagnostik



Laborgeräte & Service

Weitere Information auf den folgenden Seiten!  
See the following pages for more information!



### Lieferung & Zahlungsart

siehe unsere [Liefer- und Versandbedingungen](#)

### Zuschläge

- Mindermengenzuschlag
- Trockeneiszuschlag
- Gefahrgutzuschlag
- Expressversand

### SZABO-SCANDIC HandelsgmbH

Quellenstraße 110, A-1100 Wien

T. +43(0)1 489 3961-0

F. +43(0)1 489 3961-7

[mail@szabo-scandic.com](mailto:mail@szabo-scandic.com)

[www.szabo-scandic.com](http://www.szabo-scandic.com)

[linkedin.com/company/szaboscandic](https://www.linkedin.com/company/szaboscandic) 

## DDX11 MaxPab mouse polyclonal antibody (B01) MaxPab®

Catalog # : H00001663-B01

規格 : [ 50 uL ]

[List All](#)

### Specification

**Product Description:** Mouse polyclonal antibody raised against a full-length human DDX11 protein.

**Immunogen:** DDX11 (AAH50522.1, 1 a.a. ~ 970 a.a) full-length human protein.

**Sequence:**  
 MANETQKVGAIHFPPFTPYSIQEDFMAELYRVLEAGKIGIFESPTGTGKS  
 LSLICGALSWLRDFEQKKREEEARLLETGTGPLHDEKDESLCLSSSCEG  
 AAGTPRPAGEPAWVTQFVQKKEERDLVDRLKAEQARRKQREERLQQL  
 QHRVQLKYAAKRLRQEEEEERENLLRLSREMLETGPEAERLEQLESGEEE  
 LVLAEYESDEEKVASRVDEDEDDLEEEHITKIYYCSRTHSQAQFVHEV  
 KKSPFGKDVRLVSLGSRQNLVSNEDVKSLSVQLINDRCVDMQRSRHE  
 KKKGAEEEEKPKRRRQEKQAACPFYNHEQMGLLRDEALAEVKDMEQLLA  
 LGKEARACPYGSRSLAIPAAQLVLPYQMLLHAATRQAAGIRLQDQVVID  
 EAHNLIDTITGMHSVEVSGSQLCQAHSQLLQYVERYGKRLKAKNLMYLK  
 QILYLLEKFVAVLGGNIKQNPNTQSLSQGTGTELKTINDFLFQSQIDNINLFK  
 VQRYCEKSMISRKLFGFTERYGAVFSSREQPKLAGFQQFLQSLQPRTT  
 EALAAPADESQASTLRPASPLMHIQGFLAALTMANQDGRVILSRQGSLS  
 QSTLKFLLLNPAVHFAQVVKECRAVVIAGGTMQPVSDFRQQLLACAGVE  
 AERVVEFSCGHVIPPDNILPLVICSGISNQPLEFTFQKRELPMMDDEVGRI  
 LCNLCGVVPGGVVCFPSYEYLRQVHAHWKGGLLGRLAARKKIFQEP  
 KSAHQVEQVLLAYSRCIQACQGERGQVTGALLLSVVGKMSSEGINFSDN  
 LGRCVVMVGMPPFNIRSAELQEKMAYLDQTLSPRPGTPREGSGGPEVH  
 EGRQPVHRQGHQAPEGFQCRSAPGPAICPAPCPGQAAGLDPSPCGGQ  
 SYLWPRHCCCAEVSPGEVGLFLMGNHTTAWRRALPLSCPLETVFVGV  
 VCGDPVTKVKPRRRVWSPECCQDPGTGVSSRRRKWGNPE

**Host:** Mouse

**Reactivity:** Human

**Quality Control Testing:** Antibody reactive against mammalian transfected lysate.

**Storage Buffer:** No additive

**Storage Instruction:** Store at -20°C or lower. Aliquot to avoid repeated freezing and thawing.

**Note:** For IHC and IF applications, antibody purification with Protein A will be needed prior to use.

**MSDS:** [Download](#)

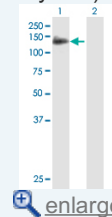
**Datasheet:** [Download](#)

### Applications

**Western Blot (Transfected lysate)**

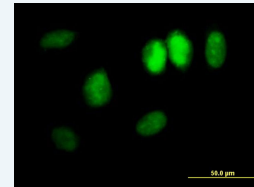
### Application Image

Western Blot (Transfected lysate)

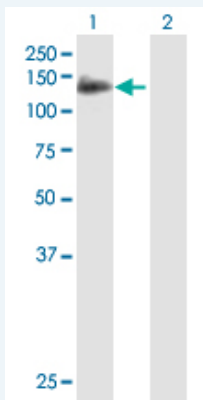


[enlarge](#)

Immunofluorescence



[enlarge](#)

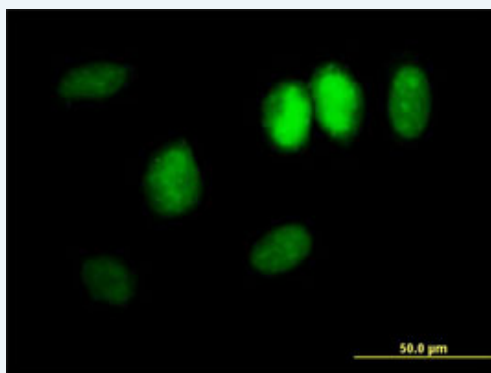


Western Blot analysis of DDX11 expression in transfected 293T cell line ([H00001663-T01](#)) by DDX11 MaxPab polyclonal antibody.

Lane 1: DDX11 transfected lysate(106.7 KDa).  
Lane 2: Non-transfected lysate.

[Protocol Download](#)

### Immunofluorescence



enlarge this image

Immunofluorescence of [purified](#) MaxPab antibody to DDX11 on HeLa cell. [antibody concentration 10 ug/ml]

[Protocol Download](#)

### Gene Information

Entrez GeneID: [1663](#)

GeneBank [BC050522](#)  
Accession#:

Protein [AAH50522.1](#)  
Accession#:

Gene Name: DDX11

Gene Alias: CHL1,CHLR1,KRG2,MGC133249,MGC9335

Gene Description: DEAD/H (Asp-Glu-Ala-Asp/His) box polypeptide 11 (CHL1-like helicase homolog, *S. cerevisiae*)

Omim ID: [601150](#)

Gene Ontology: [Hyperlink](#)

**Gene Summary:** DEAD box proteins, characterized by the conserved motif Asp-Glu-Ala-Asp (DEAD), are putative RNA helicases. They are implicated in a number of cellular processes involving alteration of RNA secondary structure such as translation initiation, nuclear and mitochondrial splicing, and ribosome and spliceosome assembly. Based on their distribution patterns, some members of this family are believed to be involved in embryogenesis, spermatogenesis, and cellular growth and division. This gene encodes a DEAD box protein, which is an enzyme

that possesses both ATPase and DNA helicase activities. This gene is a homolog of the yeast CHL1 gene, and may function to maintain chromosome transmission fidelity and genome stability. Alternative splicing results in multiple transcript variants encoding distinct isoforms. [provided by RefSeq]

---

**Other** CHL1-related helicase gene-1,DEAD/H (Asp-Glu-Ala-Asp/His) box  
**Designations:** polypeptide 11,keratinocyte growth factor-regulated gene 2

---

---

[服務條款](#) | [隱私權政策](#) | [著作及商標](#) | [網站地圖](#)

©2016 亞諾法生技股份有限公司 Abnova Corporation. 版權所有.