



# SZABO SCANDIC

Part of Europa Biosite

## Produktinformation



Forschungsprodukte & Biochemikalien



Zellkultur & Verbrauchsmaterial



Diagnostik & molekulare Diagnostik



Laborgeräte & Service

Weitere Information auf den folgenden Seiten!  
See the following pages for more information!



### Lieferung & Zahlungsart

siehe unsere [Liefer- und Versandbedingungen](#)

### Zuschläge

- Mindermengenzuschlag
- Trockeneiszuschlag
- Gefahrgutzuschlag
- Expressversand

### SZABO-SCANDIC HandelsgmbH

Quellenstraße 110, A-1100 Wien

T. +43(0)1 489 3961-0

F. +43(0)1 489 3961-7

[mail@szabo-scandic.com](mailto:mail@szabo-scandic.com)

[www.szabo-scandic.com](http://www.szabo-scandic.com)

[linkedin.com/company/szaboscandic](https://www.linkedin.com/company/szaboscandic) 

## DDX11 monoclonal antibody (M03), clone 3C1

Catalog # : H00001663-M03

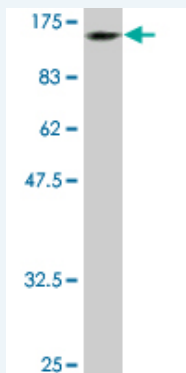
規格 : [ 100 ug ]

[List All](#)

### Specification

<b>Product Description:</b>	Mouse monoclonal antibody raised against a full-length recombinant DDX11.
<b>Immunogen:</b>	DDX11 (AAH11264, 1 a.a. ~ 970 a.a) full-length recombinant protein with GST tag. MW of the GST tag alone is 26 KDa.
<b>Sequence:</b>	MANETQKVGAIHFFPFPFPYSIQEDFMAELYRVLEAGKIGIFESPTGTGKS LSLICGALSWLRDFEQKKREEEARLLETGTGPLHDEKDESLCLSSSCEG AAGTPRPAGEPAWVTQFVQKKEERDLVDRLKAEQARRKQREERLQQL QHRVQLKYAAKRLRQEEEEERENLLRLSREMLETGPEAERLEQLESGE LVLAEYESDEEKVASRVDEDEDDLEEEHITKIYYCSRTHSQAQFVHEV KKSPFGKDVRLVSLGSRQNLVNVEDVKSLSVQLINDRCVDMQRSRHE KKKGAEEEKPKRRRQEKQAACPFYNHEQMGLLRDEALAEVKDMEQLLA LGKEARACPYGSRLAIPAAQLVVLVYPYQMLLHAATRQAAGIRLQDQVVID EAHNLIDTITGMHSVEVSGSQLCQAHSQQLQYVERYGKRLKAKNLMYLK QILYLLEKFVAVLGGNIKQNPNTQSLSQGTGTELKTIINDFLFQSQIDNINLFK VQRYCEKSMISRKLFGFTERYGAVFSSREQPKLAGFQQFLQSLQPRTT EALAAPADESQASTLRPASPLMHIQGFALAALTTANQDGRVILSRQGSLSQ STLKFULLNPAVHFAQVVKCRAVVIAGGTMQPVSDFRQQLACAGVEA ERVVEFSCGHVIPPDLNPLVICSGISNPLEFTFQKRELPQMMDEVGRIL CNLCGVVPGGVVCFPSYEYLRQVHAHWEKGGLLGRLAARKKIFQEPK SAHQVEQVLLAYSRCIQACQGERGQVTGALLSVVGGKMSEGINFSDNL GRCVVMVGMFPNIRSAELQEKMAYLDQTLSPRPGTPREGSGGEPVHE GRQPVHRQGHQAPEGFCQRSAPGPAICPAPCPGQAAGLDPSPCGGQS YLWPRHCCCAEVSPGEVGLFLMGNHATAWRRALPLSCPLETVFVGVV CGDPVTKVKPRRRVWSPECCQDPGTGVSSRRRKKWGNPE
<b>Host:</b>	Mouse
<b>Reactivity:</b>	Human
<b>Isotype:</b>	IgG2b Kappa

**Quality Control Testing:** Antibody Reactive Against Recombinant Protein.



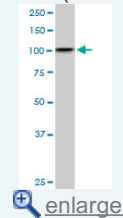
Western Blot detection against Immunogen (132.46 KDa) .

**Storage Buffer:** In 1x PBS, pH 7.4

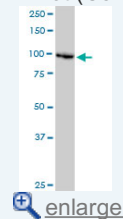
**Storage Instruction:** Store at -20°C or lower. Aliquot to avoid repeated freezing and thawing.

### Application Image

Western Blot (Tissue lysate)

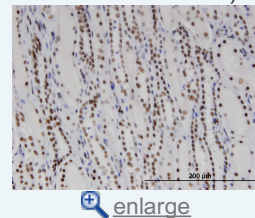


Western Blot (Cell lysate)



Western Blot (Recombinant protein)

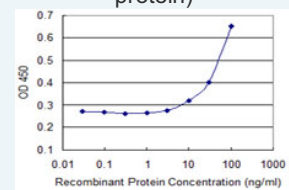
Immunohistochemistry  
(Formalin/PFA-fixed paraffin-embedded sections)



Immunofluorescence



Sandwich ELISA (Recombinant protein)



[enlarge](#)

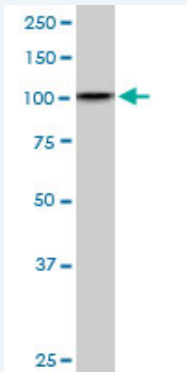
ELISA

MSDS: [Download](#)

Datasheet: [Download](#)

## Applications

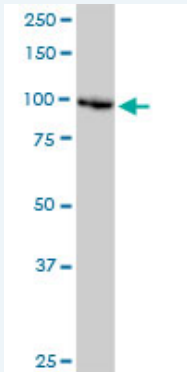
### Western Blot (Tissue lysate)



DDX11 monoclonal antibody (M03), clone 3C1. Western Blot analysis of DDX11 expression in human liver.

[Protocol Download](#)

### Western Blot (Cell lysate)



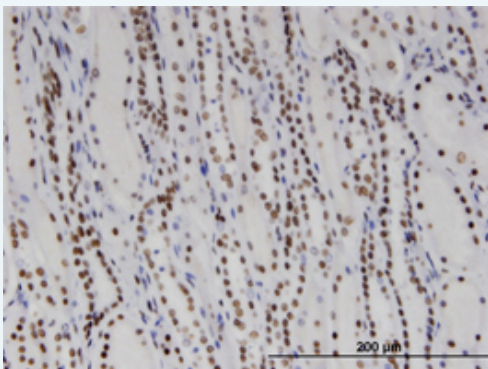
DDX11 monoclonal antibody (M03), clone 3C1. Western Blot analysis of DDX11 expression in HeLa (Cat # L013V1).

[Protocol Download](#)

### Western Blot (Recombinant protein)

[Protocol Download](#)

### Immunohistochemistry (Formalin/PFA-fixed paraffin-embedded sections)

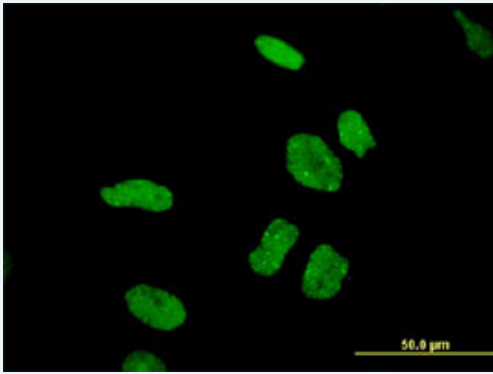


[enlarge this image](#)

Immunoperoxidase of monoclonal antibody to DDX11 on formalin-fixed paraffin-embedded human kidney. [antibody concentration 3 ug/ml]

[Protocol Download](#)

### Immunofluorescence

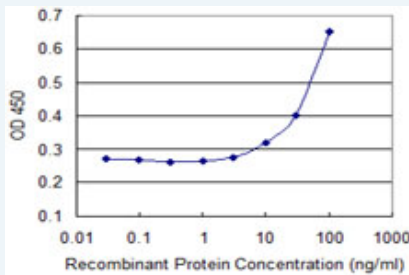


[enlarge this image](#)

Immunofluorescence of monoclonal antibody to DDX11 on HeLa cell . [antibody concentration 10 ug/ml]

[Protocol Download](#)

### Sandwich ELISA (Recombinant protein)



Detection limit for recombinant GST tagged DDX11 is 3 ng/ml as a capture antibody.

[Protocol Download](#)

### ELISA

### Gene Information

Entrez GeneID: [1663](#)

GeneBank [BC011264](#)  
Accession#:

Protein [AAH11264](#)  
Accession#:

Gene Name: DDX11

Gene Alias: CHL1,CHLR1,KRG2,MGC133249,MGC9335

Gene Description: DEAD/H (Asp-Glu-Ala-Asp/His) box polypeptide 11 (CHL1-like helicase homolog, *S. cerevisiae*)

Omim ID: [601150](#)

Gene Ontology: [Hyperlink](#)

**Gene Summary:** DEAD box proteins, characterized by the conserved motif Asp-Glu-Ala-Asp (DEAD), are putative RNA helicases. They are implicated in a number of cellular processes involving alteration of RNA secondary structure such as translation initiation, nuclear and mitochondrial splicing, and ribosome and spliceosome assembly. Based on their distribution patterns, some members of this family are believed to be involved in embryogenesis, spermatogenesis, and cellular growth and division. This gene encodes a DEAD box protein, which is an enzyme that possesses both ATPase and DNA helicase activities. This gene is a homolog of the yeast CHL1 gene, and may function to maintain chromosome transmission fidelity and genome stability. Alternative splicing results in multiple transcript variants encoding distinct isoforms. [provided by RefSeq]

**Other** CHL1-related helicase gene-1,DEAD/H (Asp-Glu-Ala-Asp/His) box  
**Designations:** polypeptide 11,keratinocyte growth factor-regulated gene 2

---

---

[服務條款](#) | [隱私權政策](#) | [著作及商標](#) | [網站地圖](#)

©2016 亞諾法生技股份有限公司 Abnova Corporation. 版權所有.