



SZABO SCANDIC

Part of Europa Biosite

Produktinformation



Forschungsprodukte & Biochemikalien



Zellkultur & Verbrauchsmaterial



Diagnostik & molekulare Diagnostik



Laborgeräte & Service

Weitere Information auf den folgenden Seiten!
See the following pages for more information!



Lieferung & Zahlungsart

siehe unsere [Liefer- und Versandbedingungen](#)

Zuschläge

- Mindermengenzuschlag
- Trockeneiszuschlag
- Gefahrgutzuschlag
- Expressversand

SZABO-SCANDIC HandelsgmbH

Quellenstraße 110, A-1100 Wien

T. +43(0)1 489 3961-0

F. +43(0)1 489 3961-7

mail@szabo-scandic.com

www.szabo-scandic.com

[linkedin.com/company/szaboscandic](https://www.linkedin.com/company/szaboscandic) 

DECR1 monoclonal antibody (M01), clone 3D4

Catalog # : H00001666-M01

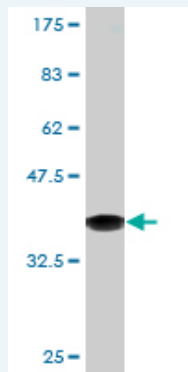
規格 : [100 ug]

[List All](#)

Specification

| | |
|-----------------------------|--|
| Product Description: | Mouse monoclonal antibody raised against a partial recombinant DECR1. |
| Immunogen: | DECR1 (NP_001350, 236 a.a. ~ 335 a.a) partial recombinant protein with GST tag. MW of the GST tag alone is 26 KDa. |
| Sequence: | NVIQPGPIKTKGAFSRLDPTGTFEKEMIGRIPCGRLGTVEELANLAAFLCS DYASWINGAVIKFDGGEEVLISGEFNDLRKVTKEQWDTIEELIRKTKGS |
| Host: | Mouse |
| Reactivity: | Human |
| Isotype: | IgG2a Kappa |

Quality Control Testing: Antibody Reactive Against Recombinant Protein.



Western Blot detection against Immunogen (36.74 KDa) .

Storage Buffer: In 1x PBS, pH 7.4

Storage Instruction: Store at -20°C or lower. Aliquot to avoid repeated freezing and thawing.

MSDS: [Download](#)

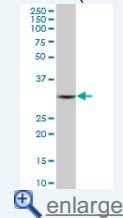
Datasheet: [Download](#)

Applications

Western Blot (Cell lysate)

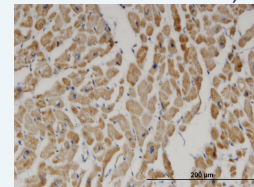
Application Image

Western Blot (Cell lysate)

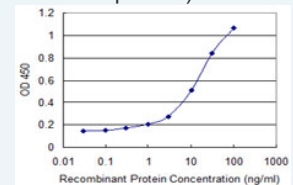


Western Blot (Recombinant protein)

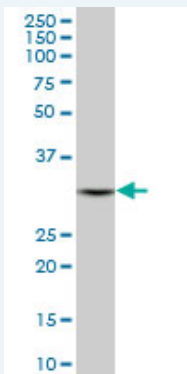
Immunohistochemistry (Formalin/PFA-fixed paraffin-embedded sections)



Sandwich ELISA (Recombinant protein)



ELISA



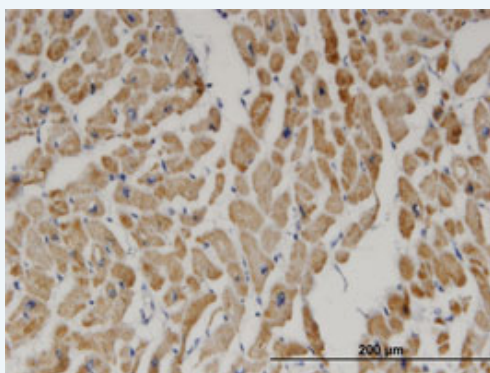
DECR1 monoclonal antibody (M01), clone 3D4. Western Blot analysis of DECR1 expression in HepG2 (Cat # L019V1).

[Protocol Download](#)

Western Blot (Recombinant protein)

[Protocol Download](#)

Immunohistochemistry (Formalin/PFA-fixed paraffin-embedded sections)

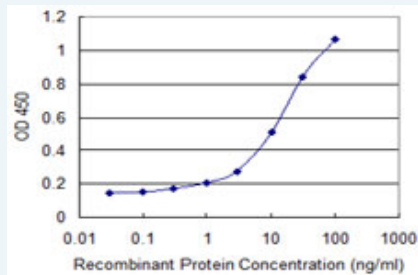


[enlarge this image](#)

Immunoperoxidase of monoclonal antibody to DECR1 on formalin-fixed paraffin-embedded human heart. [antibody concentration 3 ug/ml]

[Protocol Download](#)

Sandwich ELISA (Recombinant protein)



Detection limit for recombinant GST tagged DECR1 is 0.3 ng/ml as a capture antibody.

[Protocol Download](#)

ELISA

Gene Information

Entrez GeneID: [1666](#)

GeneBank [NM_001359](#)

Accession#:

Protein [NP_001350](#)

Accession#:

Gene Name: DECR1

Gene Alias: DECR,NADPH,SDR18C1

Gene 2,4-dienoyl CoA reductase 1, mitochondrial
Description:

Omim ID: [222745](#)

Gene Ontology: [Hyperlink](#)

Gene Summary: This gene encodes an accessory enzyme which participates in the beta-oxidation and metabolism of unsaturated fatty enoyl-CoA esters.
[provided by RefSeq]

Other Designations: 2,4-dienoyl CoA reductase 1,4-enoyl-CoA reductase,short chain dehydrogenase/reductase family 18C, member 1

Related Disease

[Genetic Predisposition to Disease](#) [Hematologic Diseases](#) [Occupational Diseases](#)
[Parkinson Disease](#) [Parkinson disease](#) [Tobacco Use Disorder](#)

[服務條款](#) | [隱私權政策](#) | [著作及商標](#) | [網站地圖](#)

©2016 亞諾法生技股份有限公司 Abnova Corporation. 版權所有.