



SZABO SCANDIC

Part of Europa Biosite

Produktinformation



Forschungsprodukte & Biochemikalien



Zellkultur & Verbrauchsmaterial



Diagnostik & molekulare Diagnostik



Laborgeräte & Service

Weitere Information auf den folgenden Seiten!
See the following pages for more information!



Lieferung & Zahlungsart

siehe unsere [Liefer- und Versandbedingungen](#)

Zuschläge

- Mindermengenzuschlag
- Trockeneiszuschlag
- Gefahrgutzuschlag
- Expressversand

SZABO-SCANDIC HandelsgmbH

Quellenstraße 110, A-1100 Wien

T. +43(0)1 489 3961-0

F. +43(0)1 489 3961-7

mail@szabo-scandic.com

www.szabo-scandic.com

[linkedin.com/company/szaboscandic](https://www.linkedin.com/company/szaboscandic) 

DES monoclonal antibody (M03), clone 1D12

Catalog # : H00001674-M03

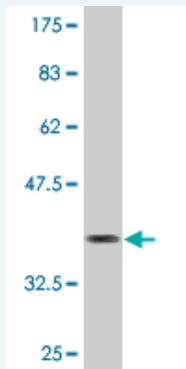
規格 : [100 ug]

[List All](#)

Specification

Product Description:	Mouse monoclonal antibody raised against a partial recombinant DES.
Immunogen:	DES (NP_001918.3, 361 a.a. ~ 470 a.a) partial recombinant protein with GST tag. MW of the GST tag alone is 26 KDa.
Sequence:	SGYQDNARLEEEIRHLKDEMARHLREYQDLLNVKMALDVEIATYRKLE GEESRINLPIQTYSALNFRETSPEQRGSEVHTKKTVMIKTIETRDGEVSE ATQQQHEVL
Host:	Mouse
Reactivity:	Human
Isotype:	IgG2a Kappa

Quality Control Testing: Antibody Reactive Against Recombinant Protein.



Western Blot detection against Immunogen (37.84 KDa) .

Storage Buffer: In 1x PBS, pH 7.4

Storage Instruction: Store at -20°C or lower. Aliquot to avoid repeated freezing and thawing.

MSDS: [Download](#)

Datasheet: [Download](#)

Publication Reference

1. Fluorophore-labeled nanocapsules displaying IgG Fc-binding domains for the simultaneous detection of multiple antigens. Iijima M, Matsuzaki T, Yoshimoto N, Niimi T, Tanizawa K, Kuroda S. *Biomaterials*. 2011 Aug 23. [Epub ahead of print]

Applications

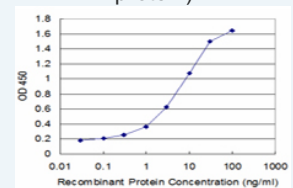
Western Blot (Recombinant protein)

[Protocol Download](#)

Application Image

Western Blot (Recombinant protein)

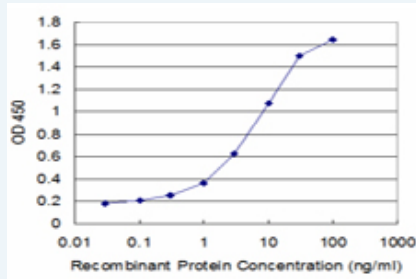
Sandwich ELISA (Recombinant protein)



[enlarge](#)

ELISA

Sandwich ELISA (Recombinant protein)



Detection limit for recombinant GST tagged DES is approximately 0.1ng/ml as a capture antibody.

 [Protocol Download](#)

ELISA

Gene Information

Entrez GeneID: [1674](#)

GeneBank [NM_001927](#)
Accession#:

Protein [NP_001918.3](#)
Accession#:

Gene Name: DES

Gene Alias: CMD11, CSM1, CSM2, FLJ12025, FLJ39719, FLJ41013, FLJ41793

Gene desmin
Description:

Omim ID: [125660](#), [601419](#), [604765](#)

Gene Ontology: [Hyperlink](#)

Gene Summary: This gene encodes a muscle-specific class III intermediate filament. Homopolymers of this protein form a stable intracytoplasmic filamentous network connecting myofibrils to each other and to the plasma membrane. Mutations in this gene are associated with desmin-related myopathy, a familial cardiac and skeletal myopathy (CSM), and with distal myopathies. [provided by RefSeq]

Other [OTTHUMP00000064865](#), intermediate filament protein
Designations:

Gene Pathway

[Arrhythmogenic right ventricular cardiomyopathy \(ARVC\)](#)
[Hypertrophic cardiomyopathy \(HCM\)](#)

Related Disease

[Cardiomyopathy, Dilated](#) [Cardiomyopathy, Hypertrophic](#)
[Cardiomyopathy, Hypertrophic, Familial](#) [Cardiomyopathy, Restrictive](#)
[Cardiovascular Diseases](#) [Diabetes Mellitus, Type 2](#) [Edema](#)