



# SZABO SCANDIC

Part of Europa Biosite

## Produktinformation



Forschungsprodukte & Biochemikalien



Zellkultur & Verbrauchsmaterial



Diagnostik & molekulare Diagnostik



Laborgeräte & Service

Weitere Information auf den folgenden Seiten!  
See the following pages for more information!



### Lieferung & Zahlungsart

siehe unsere [Liefer- und Versandbedingungen](#)

### Zuschläge

- Mindermengenzuschlag
- Trockeneiszuschlag
- Gefahrgutzuschlag
- Expressversand

### SZABO-SCANDIC HandelsgmbH

Quellenstraße 110, A-1100 Wien

T. +43(0)1 489 3961-0

F. +43(0)1 489 3961-7

[mail@szabo-scandic.com](mailto:mail@szabo-scandic.com)

[www.szabo-scandic.com](http://www.szabo-scandic.com)

[linkedin.com/company/szaboscandic](https://www.linkedin.com/company/szaboscandic) 

## DFFA monoclonal antibody (M05), clone 3A11

Catalog # : H00001676-M05

規格 : [ 100 ug ]

[List All](#)

### Specification

**Product Description:** Mouse monoclonal antibody raised against a partial recombinant DFFA.

**Immunogen:** DFFA (NP\_004392.1, 231 a.a. ~ 331 a.a) partial recombinant protein with GST tag. MW of the GST tag alone is 26 KDa.

**Sequence:** TSSDVALASHILTLALREKQAPELSLSSQDLELVTKEDPKALAVALNWDIKK  
TETVQEACERELALRLQQTQSLHSLRSISASKASPPGDLQNPKRARQDP  
T

**Host:** Mouse

**Reactivity:** Human

**Isotype:** IgG2a Kappa

**Quality Control Testing:** Antibody Reactive Against Recombinant Protein.



Western Blot detection against Immunogen (36.85 KDa) .

**Storage Buffer:** In 1x PBS, pH 7.4

**Storage Instruction:** Store at -20°C or lower. Aliquot to avoid repeated freezing and thawing.

**MSDS:** [Download](#)

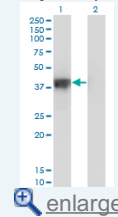
**Datasheet:** [Download](#)

### Applications

Western Blot (Transfected lysate)

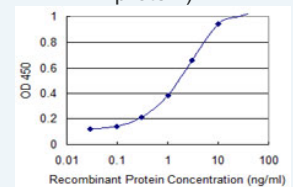
### Application Image

Western Blot (Transfected lysate)



Western Blot (Recombinant protein)

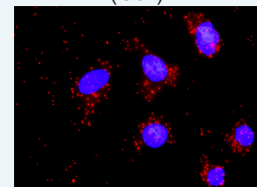
Sandwich ELISA (Recombinant protein)



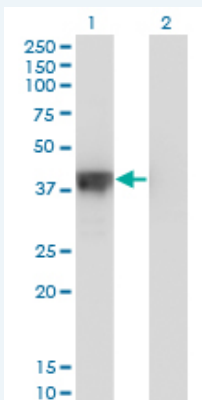
[enlarge](#)

ELISA

*In situ* Proximity Ligation Assay (Cell)



[enlarge](#)



Western Blot analysis of DFFA expression in transfected 293T cell line by DFFA monoclonal antibody (M05), clone 3A11.

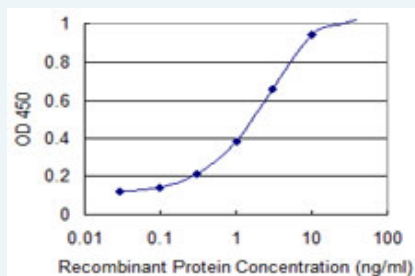
Lane 1: DFFA transfected lysate (Predicted MW: 36.5 KDa).  
Lane 2: Non-transfected lysate.

[Protocol Download](#)

### Western Blot (Recombinant protein)

[Protocol Download](#)

### Sandwich ELISA (Recombinant protein)

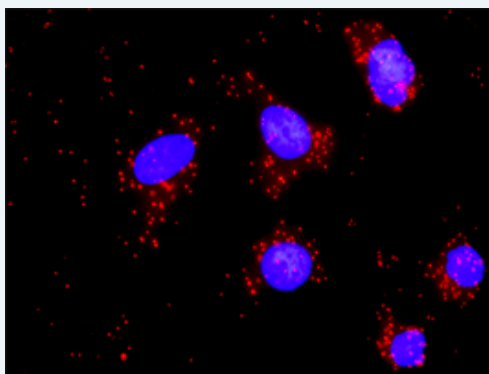


Detection limit for recombinant GST tagged DFFA is 0.1 ng/ml as a capture antibody.

[Protocol Download](#)

### ELISA

### In situ Proximity Ligation Assay (Cell)



Proximity Ligation Analysis of protein-protein interactions between CASP3 and DFFA. HeLa cells were stained with anti-CASP3 rabbit purified polyclonal 1:1200 and anti-DFFA mouse monoclonal antibody 1:50. Each red dot represents the detection of protein-protein interaction complex, and nuclei were counterstained with DAPI (blue).

### Gene Information

Entrez GeneID: [1676](#)

GeneBank [NM\\_004401](#)  
Accession#:

Protein [NP\\_004392.1](#)  
Accession#:

**Gene Name:** DFFA

**Gene Alias:** DFF-45,DFF1,ICAD

**Gene Description:** DNA fragmentation factor, 45kDa, alpha polypeptide

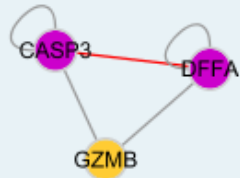
**Omim ID:** [601882](#)

**Gene Ontology:** [Hyperlink](#)

**Gene Summary:** Apoptosis is a cell death process that removes toxic and/or useless cells during mammalian development. The apoptotic process is accompanied by shrinkage and fragmentation of the cells and nuclei and degradation of the chromosomal DNA into nucleosomal units. DNA fragmentation factor (DFF) is a heterodimeric protein of 40-kD (DFFB) and 45-kD (DFFA) subunits. DFFA is the substrate for caspase-3 and triggers DNA fragmentation during apoptosis. DFF becomes activated when DFFA is cleaved by caspase-3. The cleaved fragments of DFFA dissociate from DFFB, the active component of DFF. DFFB has been found to trigger both DNA fragmentation and chromatin condensation during apoptosis. Two alternatively spliced transcript variants encoding distinct isoforms have been found for this gene. [provided by RefSeq]

**Other Designations:** DFF45,DNA fragmentation factor, 45 kD, alpha polypeptide,DNA fragmentation factor, 45 kD, alpha subunit,OTTHUMP00000001903,OTTHUMP00000001904

### Interactome



### Gene Pathway

[Apoptosis](#)

### Related Disease

[Celiac Disease Genetic Predisposition to Disease](#)