



SZABO SCANDIC

Part of Europa Biosite

Produktinformation



Forschungsprodukte & Biochemikalien



Zellkultur & Verbrauchsmaterial



Diagnostik & molekulare Diagnostik



Laborgeräte & Service

Weitere Information auf den folgenden Seiten!
See the following pages for more information!



Lieferung & Zahlungsart

siehe unsere [Liefer- und Versandbedingungen](#)

Zuschläge

- Mindermengenzuschlag
- Trockeneiszuschlag
- Gefahrgutzuschlag
- Expressversand

SZABO-SCANDIC HandelsgmbH

Quellenstraße 110, A-1100 Wien

T. +43(0)1 489 3961-0

F. +43(0)1 489 3961-7

mail@szabo-scandic.com

www.szabo-scandic.com

[linkedin.com/company/szaboscandic](https://www.linkedin.com/company/szaboscandic) 



DOCK2 monoclonal antibody (M01), clone 2F4

Catalog # : H00001794-M01

規格 : [100 ug]

List All

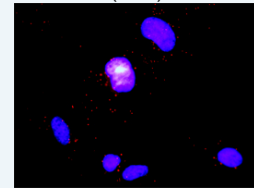
Specification

Product Description:	Mouse monoclonal antibody raised against a full length recombinant DOCK2.
Immunogen:	DOCK2 (AAH16996, 1 a.a. ~ 336 a.a) full-length recombinant protein with GST tag. MW of the GST tag alone is 26 KDa.
Sequence:	MCVCAEDGKTLPVAVPIEDMQRIHLRFMFRHRSSLESKDKGEKNFAMSY VKLMKEDGTTLHDGFHDLVVLKGDSSKMEDASAYLTLPSYRHHVENKGA TLRSRSSSVGGLSVSSRDVFSISTLVCSTKLTQNVGLLGLLKWRMKPQL EESMRRLFESINNLMSQYKTTILLQVAALKYIPSVLHDVEMVFDKLLSQ LLYEFYTCIPPVKLQKQKQSMNEIVQSNLFKKQECRDILLPVITKELKELL EQKDDMQHQVLERKYCVELLNSILEVLSYQDAAFYHHIQEIMVQLLRTV NRTVITMGRDHILIGACCNCGFPSSTPHSLIQWLWG
Host:	Mouse
Reactivity:	Human
Isotype:	IgG2a Kappa
Quality Control Testing:	Antibody Reactive Against Recombinant Protein.
Storage Buffer:	In 1x PBS, pH 7.4
Storage Instruction:	Store at -20°C or lower. Aliquot to avoid repeated freezing and thawing.
MSDS:	 Download
Datasheet:	 Download

Application Image

ELISA

In situ Proximity Ligation Assay (Cell)

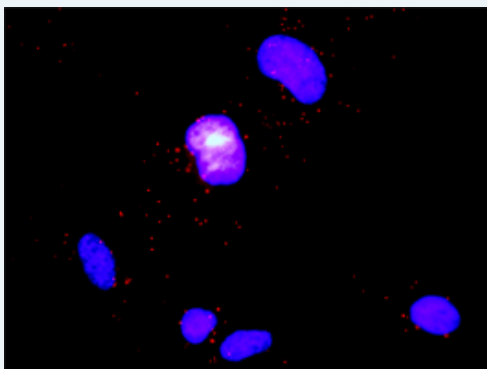


 enlarge

Applications

ELISA

In situ Proximity Ligation Assay (Cell)



Proximity Ligation Analysis of protein-protein interactions between CD247 and DOCK2. HeLa cells were stained with anti-CD247 rabbit purified polyclonal 1:1200 and anti-DOCK2 mouse monoclonal antibody 1:50. Each red dot represents the detection of protein-protein

interaction complex, and nuclei were counterstained with DAPI (blue).

Gene Information

Entrez GeneID: [1794](#)

**GeneBank
Accession#:** [BC016996](#)

**Protein
Accession#:** [AAH16996](#)

Gene Name: DOCK2

Gene Alias: FLJ46592,KIAA0209

**Gene
Description:** dedicator of cytokinesis 2

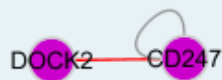
Omim ID: [603122](#)

Gene Ontology: [Hyperlink](#)

Gene Summary: The DOCK2 gene encodes a hematopoietic cell-specific CDM family protein that is indispensable for lymphocyte chemotaxis.[supplied by OMIM]

**Other
Designations:** dedicator of cyto-kinesis 2

Interactome



Gene Pathway

[Chemokine signaling pathway](#) [Fc gamma R-mediated phagocytosis](#)

Related Disease

[Cardiovascular Diseases](#) [Diabetes Mellitus, Type 2](#) [Edema](#) [Tobacco Use Disorder](#)

