



SZABO SCANDIC

Part of Europa Biosite

Produktinformation



Forschungsprodukte & Biochemikalien



Zellkultur & Verbrauchsmaterial



Diagnostik & molekulare Diagnostik



Laborgeräte & Service

Weitere Information auf den folgenden Seiten!
See the following pages for more information!



Lieferung & Zahlungsart

siehe unsere [Liefer- und Versandbedingungen](#)

Zuschläge

- Mindermengenzuschlag
- Trockeneiszuschlag
- Gefahrgutzuschlag
- Expressversand

SZABO-SCANDIC HandelsgmbH

Quellenstraße 110, A-1100 Wien

T. +43(0)1 489 3961-0

F. +43(0)1 489 3961-7

mail@szabo-scandic.com

www.szabo-scandic.com

[linkedin.com/company/szaboscandic](https://www.linkedin.com/company/szaboscandic) 

DOCK2 293T Cell Transient Overexpression Lysate(Denatured)

Catalog # : H00001794-T01

規格 : [100 uL]

List All

Specification

Transfected Cell Line: 293T

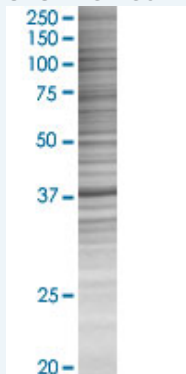
Plasmid: pCMV-DOCK2 full-length

Host: Human

Theoretical MW (kDa): 38.5

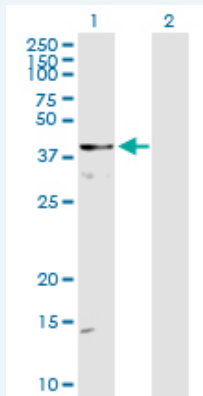
Quality Control Testing: Transient overexpression cell lysate was tested with Anti-DOCK2 antibody ([H00001794-D01](#)) by Western Blots.

SDS-PAGE Gel



DOCK2 transfected lysate.

Western Blot



Lane 1: DOCK2 transfected lysate (37.07 KDa)

Lane 2: Non-transfected lysate.

Storage Buffer: 1X Sample Buffer (50 mM Tris-HCl, 2% SDS, 10% glycerol, 300 mM 2-mercaptoethanol, 0.01% Bromophenol blue)

Storage Instruction: Store at -80°C. Aliquot to avoid repeated freezing and thawing.

MSDS:  [Download](#)

Applications

Application Image

Western Blot

Western Blot

Gene Information

Entrez GeneID: [1794](#)

GeneBank [BC016996.1](#)
Accession#:

Protein [AAH16996.1](#)
Accession#:

Gene Name: DOCK2

Gene Alias: FLJ46592,KIAA0209

Gene Description: dedicator of cytokinesis 2

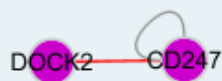
Omim ID: [603122](#)

Gene Ontology: [Hyperlink](#)

Gene Summary: The DOCK2 gene encodes a hematopoietic cell-specific CDM family protein that is indispensable for lymphocyte chemotaxis.[supplied by OMIM]

Other Designations: dedicator of cyto-kinesis 2

Interactome



Gene Pathway

[Chemokine signaling pathway](#) [Fc gamma R-mediated phagocytosis](#)

Related Disease

[Cardiovascular Diseases](#) [Diabetes Mellitus, Type 2](#) [Edema](#) [Tobacco Use Disorder](#)

