



SZABO SCANDIC

Part of Europa Biosite

Produktinformation



Forschungsprodukte & Biochemikalien



Zellkultur & Verbrauchsmaterial



Diagnostik & molekulare Diagnostik



Laborgeräte & Service

Weitere Information auf den folgenden Seiten!
See the following pages for more information!



Lieferung & Zahlungsart

siehe unsere [Liefer- und Versandbedingungen](#)

Zuschläge

- Mindermengenzuschlag
- Trockeneiszuschlag
- Gefahrgutzuschlag
- Expressversand

SZABO-SCANDIC HandelsgmbH

Quellenstraße 110, A-1100 Wien

T. +43(0)1 489 3961-0

F. +43(0)1 489 3961-7

mail@szabo-scandic.com

www.szabo-scandic.com

[linkedin.com/company/szaboscandic](https://www.linkedin.com/company/szaboscandic) 

DOK1 purified MaxPab mouse polyclonal antibody (B01P) MaxPab®

Catalog # : H00001796-B01P

規格 : [50 ug]

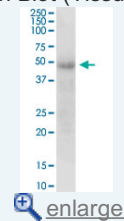
[List All](#)

Specification

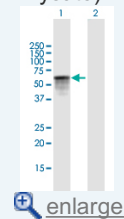
Product Description:	Mouse polyclonal antibody raised against a full-length human DOK1 protein.
Immunogen:	DOK1 (NP_001372, 1 a.a. ~ 481 a.a) full-length human protein.
Sequence:	MDGAVMEGPLFLQSQRFGTKRWRKTWAVLYPASPFGVARLEFFDHKG SSSGGGRGSSRRLDCKVIRLAECVSVAPVTVETPPEPGATAFRDLTAQR SHLLAADAPSSAAWVQTLCRNAFPKGSWTLAPTDNPPKLSALEMLENSL YSPTWEGSQFWVTVQRTEAAERCGLHGSYVLRVEAERLTLTVGAQS QILEPLLSWPYTLRRYGRDKV/MFSFEAGRRCPSGPGTFTFQTAQGNDI FQAVETAIHRQKAQKGAGQGHDVLRADSHEGEVAEGKLPSPGPGQELL DSPPALYAEPLDSLRIAPCPSQDSL YSDPLDSTSAQAGEGVQRKKPL YW DLYEHAQQQLLKAKLTDPKEDPIYDEPEGLAPVPPQGLYDLPREPKDAW WCQARVKKEEGYELPYNPATDDYAVPPRSTKPLLAPKQGPAPPEPGT ATGSGIKSHNSALYSQVQKSGASGSWDCGLSRVGTDKTGKVKSEGST
Host:	Mouse
Reactivity:	Human
Quality Control Testing:	Antibody reactive against mammalian transfected lysate.
Storage Buffer:	In 1x PBS, pH 7.4
Storage Instruction:	Store at -20°C or lower. Aliquot to avoid repeated freezing and thawing.
MSDS:	Download
Datasheet:	Download

Application Image

Western Blot (Tissue lysate)

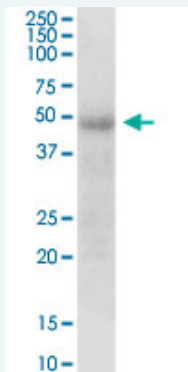


Western Blot (Transfected lysate)



Applications

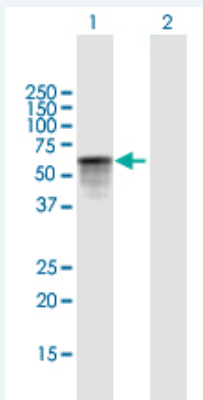
Western Blot (Tissue lysate)



DOK1 MaxPab polyclonal antibody. Western Blot analysis of DOK1 expression in human spleen.

[Protocol Download](#)


Western Blot (Transfected lysate)



Western Blot analysis of DOK1 expression in transfected 293T cell line ([H00001796-T01](#)) by DOK1 MaxPab polyclonal antibody.

Lane 1: DOK1 transfected lysate(52.91 KDa).

Lane 2: Non-transfected lysate.

 [Protocol Download](#)

Gene Information

Entrez GeneID: [1796](#)

GeneBank [NM_001381](#)

Accession#:

Protein [NP_001372](#)

Accession#:

Gene Name: DOK1

Gene Alias: MGC117395,MGC138860,P62DOK

Gene docking protein 1, 62kDa (downstream of tyrosine kinase 1)

Description:

Omim ID: [602919](#)

Gene Ontology: [Hyperlink](#)

Gene Summary: Docking protein 1 is constitutively tyrosine phosphorylated in hematopoietic progenitors isolated from chronic myelogenous leukemia (CML) patients in the chronic phase. It may be a critical substrate for p210(bcr/abl), a chimeric protein whose presence is associated with CML. Docking protein 1 contains a putative pleckstrin homology domain at the amino terminus and ten PXXP SH3 recognition motifs. Docking protein 2 binds p120 (RasGAP) from CML cells. It has been postulated to play a role in mitogenic signaling. [provided by RefSeq]

Other Downstream of tyrosine kinase 1,docking protein 1,docking protein 1
Designations: (downstream of tyrosine kinase 1),docking protein 1, 62kD (downstream of tyrosine kinase 1)

Related Disease

[Genetic Predisposition to Disease Leukemia, Lymphocytic, Chronic](#)