



# SZABO SCANDIC

Part of Europa Biosite

## Produktinformation



Forschungsprodukte & Biochemikalien



Zellkultur & Verbrauchsmaterial



Diagnostik & molekulare Diagnostik



Laborgeräte & Service

Weitere Information auf den folgenden Seiten!  
See the following pages for more information!



### Lieferung & Zahlungsart

siehe unsere [Liefer- und Versandbedingungen](#)

### Zuschläge

- Mindermengenzuschlag
- Trockeneiszuschlag
- Gefahrgutzuschlag
- Expressversand

### SZABO-SCANDIC HandelsgmbH

Quellenstraße 110, A-1100 Wien

T. +43(0)1 489 3961-0

F. +43(0)1 489 3961-7

[mail@szabo-scandic.com](mailto:mail@szabo-scandic.com)

[www.szabo-scandic.com](http://www.szabo-scandic.com)

[linkedin.com/company/szaboscandic](https://www.linkedin.com/company/szaboscandic) 

## DOK1 purified MaxPab rabbit polyclonal antibody (D01P) MaxPab®

Catalog # : H00001796-D01P

規格 : [ 100 ug ]

[List All](#)

### Specification

**Product Description:** Rabbit polyclonal antibody raised against a full-length human DOK1 protein.

**Immunogen:** DOK1 (NP\_001372.1, 1 a.a. ~ 481 a.a) full-length human protein.

**Sequence:**  
 MDGAVMEGPLFLQSQRFGTKRWRKTWAVLYPASPVGVARLEFFDHKG  
 SSSGGGRGSSRRLDCKVIRLAECVSVAPVTVETPPEPGATAFRLDTAQR  
 SHLLAADAPSSAAWVQTLCRNAFPKGSWTLAPTDNPPKLSALEMLENSL  
 YSPTWEGSQFWVTVQRTEAAERCGLHGSYVLRVEAERLTLTVGAQS  
 QILEPLLSWPYTLRRYGRDKVMFSFEAGRRCPSGPGTFTFQTAQGNDI  
 FQAVETAIHRQKAQKGAGQGHDVLRADSHEGEVAEGKLPSPGPGQELL  
 DSPPALYAEPLDSLRIAPCPSQDSL YSDPLDSTSAQAGEGVQRKKPL YW  
 DLYEHAQQQLLKAKLTDPKEDPIYDEPEGLAPVPPQGLYDLPREPKDAW  
 WCQARVKKEEGYELPYNPATDDYAVPPPRSTKPLLAPKPQGPAPPEPGT  
 ATGSGIKSHNSALYSQVQKSGASGSWDCGLSRVGTDKTGKVKSEGST

**Host:** Rabbit

**Reactivity:** Human

**Quality Control Testing:** Antibody reactive against mammalian transfected lysate.

**Storage Buffer:** In 1x PBS, pH 7.4

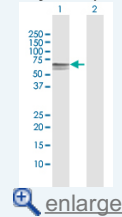
**Storage Instruction:** Store at -20°C or lower. Aliquot to avoid repeated freezing and thawing.


**MSDS:**  [Download](#)

**Datasheet:**  [Download](#)

### Application Image

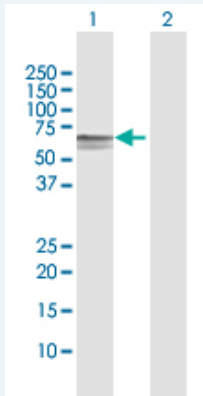
Western Blot (Transfected lysate)



 [enlarge](#)

### Applications

Western Blot (Transfected lysate)



Western Blot analysis of DOK1 expression in transfected 293T cell line (H00001796-T01) by DOK1 MaxPab polyclonal antibody.

Lane 1: DOK1 transfected lysate(52.40 KDa).  
 Lane 2: Non-transfected lysate.

**Gene Information**

**Entrez GeneID:** [1796](#)

**GeneBank Accession#:** [NM\\_001381](#)

**Protein Accession#:** [NP\\_001372.1](#)

**Gene Name:** DOK1

**Gene Alias:** MGC117395,MGC138860,P62DOK

**Gene Description:** docking protein 1, 62kDa (downstream of tyrosine kinase 1)

**Omim ID:** [602919](#)

**Gene Ontology:** [Hyperlink](#)

**Gene Summary:** Docking protein 1 is constitutively tyrosine phosphorylated in hematopoietic progenitors isolated from chronic myelogenous leukemia (CML) patients in the chronic phase. It may be a critical substrate for p210(bcr/abl), a chimeric protein whose presence is associated with CML. Docking protein 1 contains a putative pleckstrin homology domain at the amino terminus and ten PXXP SH3 recognition motifs. Docking protein 2 binds p120 (RasGAP) from CML cells. It has been postulated to play a role in mitogenic signaling. [provided by RefSeq]

**Other Designations:** Downstream of tyrosine kinase 1,docking protein 1,docking protein 1 (downstream of tyrosine kinase 1),docking protein 1, 62kD (downstream of tyrosine kinase 1)

**Related Disease**

[Genetic Predisposition to Disease Leukemia, Lymphocytic, Chronic](#)