



SZABO SCANDIC

Part of Europa Biosite

Produktinformation



Forschungsprodukte & Biochemikalien



Zellkultur & Verbrauchsmaterial



Diagnostik & molekulare Diagnostik



Laborgeräte & Service

Weitere Information auf den folgenden Seiten!
See the following pages for more information!



Lieferung & Zahlungsart

siehe unsere [Liefer- und Versandbedingungen](#)

Zuschläge

- Mindermengenzuschlag
- Trockeneiszuschlag
- Gefahrgutzuschlag
- Expressversand

SZABO-SCANDIC HandelsgmbH

Quellenstraße 110, A-1100 Wien

T. +43(0)1 489 3961-0

F. +43(0)1 489 3961-7

mail@szabo-scandic.com

www.szabo-scandic.com

[linkedin.com/company/szaboscandic](https://www.linkedin.com/company/szaboscandic) 

DOK1 293T Cell Transient Overexpression Lysate(Denatured)

Catalog # : H00001796-T01

規格 : [100 uL]

List All

Specification

Transfected Cell Line: 293T

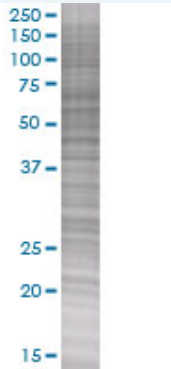
Plasmid: pCMV-DOK1 full-length

Host: Human

Theoretical MW (kDa): 52.4

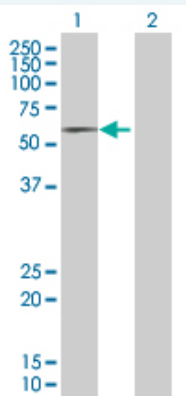
Quality Control Testing: Transient overexpression cell lysate was tested with Anti-DOK1 antibody (H00001796-B01) by Western Blots.

SDS-PAGE Gel



DOK1 transfected lysate

Western Blot



Lane 1: DOK1 transfected lysate (52.4 KDa).

Lane 2: Non-transfected lysate.

Storage Buffer: 1X Sample Buffer (50 mM Tris-HCl, 2% SDS, 10% glycerol, 300 mM 2-mercaptoethanol, 0.01% Bromophenol blue)

Storage Instruction: Store at -80°C. Aliquot to avoid repeated freezing and thawing.

MSDS:  [Download](#)

Applications

Application Image

Western Blot

Western Blot

Gene Information

Entrez GeneID: [1796](#)

GeneBank Accession#: [NM_001381](#)

Protein Accession#: [NP_001372](#)

Gene Name: DOK1

Gene Alias: MGC117395,MGC138860,P62DOK

Gene Description: docking protein 1, 62kDa (downstream of tyrosine kinase 1)

Omim ID: [602919](#)

Gene Ontology: [Hyperlink](#)

Gene Summary: Docking protein 1 is constitutively tyrosine phosphorylated in hematopoietic progenitors isolated from chronic myelogenous leukemia (CML) patients in the chronic phase. It may be a critical substrate for p210(bcr/abl), a chimeric protein whose presence is associated with CML. Docking protein 1 contains a putative pleckstrin homology domain at the amino terminus and ten PXXP SH3 recognition motifs. Docking protein 2 binds p120 (RasGAP) from CML cells. It has been postulated to play a role in mitogenic signaling. [provided by RefSeq]

Other Designations: Downstream of tyrosine kinase 1,docking protein 1,docking protein 1 (downstream of tyrosine kinase 1),docking protein 1, 62kD (downstream of tyrosine kinase 1)

Related Disease

[Genetic Predisposition to Disease Leukemia, Lymphocytic, Chronic](#)