



SZABO SCANDIC

Part of Europa Biosite

Produktinformation



Forschungsprodukte & Biochemikalien



Zellkultur & Verbrauchsmaterial



Diagnostik & molekulare Diagnostik



Laborgeräte & Service

Weitere Information auf den folgenden Seiten!
See the following pages for more information!



Lieferung & Zahlungsart

siehe unsere [Liefer- und Versandbedingungen](#)

Zuschläge

- Mindermengenzuschlag
- Trockeneiszuschlag
- Gefahrgutzuschlag
- Expressversand

SZABO-SCANDIC HandelsgmbH

Quellenstraße 110, A-1100 Wien

T. +43(0)1 489 3961-0

F. +43(0)1 489 3961-7

mail@szabo-scandic.com

www.szabo-scandic.com

[linkedin.com/company/szaboscandic](https://www.linkedin.com/company/szaboscandic) 

DPYSL2 monoclonal antibody (M01), clone 1F11

Catalog # : H00001808-M01

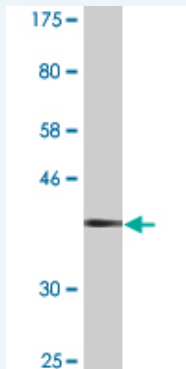
規格 : [100 ug]

[List All](#)

Specification

Product Description:	Mouse monoclonal antibody raised against a partial recombinant DPYSL2.
Immunogen:	DPYSL2 (NP_001377.1, 470 a.a. ~ 571 a.a) partial recombinant protein with GST tag. MW of the GST tag alone is 26 KDa.
Sequence:	PRKPFDPFVYKRIKARSRLAELRGVPRGLYDGPVCEVSVTPKTVTPASS AKTSPAKQQAPPVRNLHQSGFSLSGAQIDDNIPRRTTQRIVAPPGGRANI TSL
Host:	Mouse
Reactivity:	Human
Isotype:	IgG2a Kappa

Quality Control Testing: Antibody Reactive Against Recombinant Protein.



Western Blot detection against Immunogen (36.96 KDa) .

Storage Buffer: In 1x PBS, pH 7.4

Storage Instruction: Store at -20°C or lower. Aliquot to avoid repeated freezing and thawing.

MSDS: [Download](#)

Datasheet: [Download](#)

Publication Reference

1. [Quantitative Proteome Analysis of Pluripotent Cells by iTRAQ Mass Tagging Reveals Post-transcriptional Regulation of Proteins Required for ES Cell Self-renewal](#)
O'Brien RN, Shen Z, Tachikawa K, Lee PA, Briggs SP. Mol Cell Proteomics. 2010 Oct;9(10):2238-51. Epub 2010 May 31.

Applications

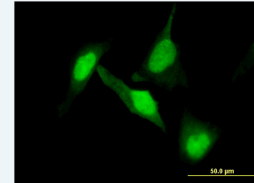
Western Blot (Recombinant protein)

[Protocol Download](#)

Application Image

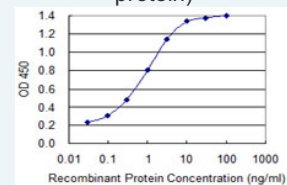
Western Blot (Recombinant protein)

Immunofluorescence



[enlarge](#)

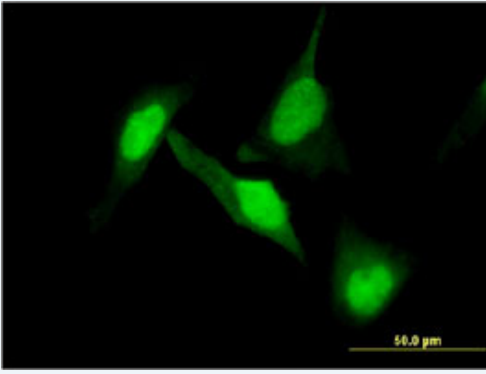
Sandwich ELISA (Recombinant protein)



[enlarge](#)

ELISA

Immunofluorescence

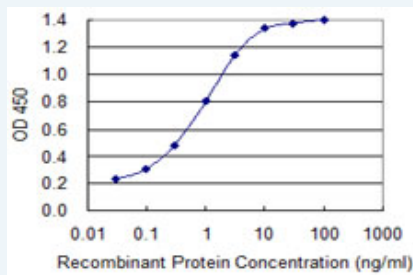


[enlarge this image](#)

Immunofluorescence of monoclonal antibody to DPYSL2 on HeLa cell . [antibody concentration 10 ug/ml]

[Protocol Download](#)

Sandwich ELISA (Recombinant protein)



Detection limit for recombinant GST tagged DPYSL2 is 0.03 ng/ml as a capture antibody.

[Protocol Download](#)

ELISA

Gene Information

Entrez GeneID: [1808](#)

GeneBank [NM_001386](#)
Accession#:

Protein [NP_001377.1](#)
Accession#:

Gene Name: DPYSL2

Gene Alias: CRMP2,DHPRP2,DRP-2,DRP2

Gene [dihydropyrimidinase-like 2](#)
Description:

Omim ID: [602463](#)

Gene Ontology: [Hyperlink](#)

Other [collapsin response mediator protein hCRMP-2,dihydropyrimidinase-like](#)
Designations: 2 long form

Gene Pathway

[Axon guidance](#)

Related Disease

[Bipolar Disorder](#) [Genetic Predisposition to Disease](#) [Schizophrenia](#) [Schizophrenia](#)
[Tobacco Use Disorder](#)

[服務條款](#) | [隱私權政策](#) | [著作及商標](#) | [網站地圖](#)

©2016 亞諾法生技股份有限公司 Abnova Corporation. 版權所有.