



SZABO SCANDIC

Part of Europa Biosite

Produktinformation



Forschungsprodukte & Biochemikalien



Zellkultur & Verbrauchsmaterial



Diagnostik & molekulare Diagnostik



Laborgeräte & Service

Weitere Information auf den folgenden Seiten!
See the following pages for more information!



Lieferung & Zahlungsart

siehe unsere [Liefer- und Versandbedingungen](#)

Zuschläge

- Mindermengenzuschlag
- Trockeneiszuschlag
- Gefahrgutzuschlag
- Expressversand

SZABO-SCANDIC HandelsgmbH

Quellenstraße 110, A-1100 Wien

T. +43(0)1 489 3961-0

F. +43(0)1 489 3961-7

mail@szabo-scandic.com

www.szabo-scandic.com

[linkedin.com/company/szaboscandic](https://www.linkedin.com/company/szaboscandic)

SLC26A3 polyclonal antibody (A01)

Catalog # : H00001811-A01

規格 : [50 uL]

List All

Specification

Product Description: Mouse polyclonal antibody raised against a partial recombinant SLC26A3.

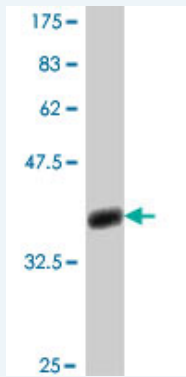
Immunogen: SLC26A3 (NP_000102, 503 a.a. ~ 600 a.a) partial recombinant protein with GST tag.

Sequence: TQFPKCSTLANIGRTNIYKNKKDYDMYEPEGVKIFRCPSPIYFANIGFFR
RKLIDAVGFSPRLRLRKRNKALRKIRKIQKQGLLQVTPKGFICTVDT

Host: Mouse

Reactivity: Human

Quality Control Testing: Antibody Reactive Against Recombinant Protein.



Western Blot detection against Immunogen (36.89 KDa) .

Storage Buffer: 50 % glycerol

Storage Instruction: Store at -20°C or lower. Aliquot to avoid repeated freezing and thawing.

MSDS: [Download](#)

Datasheet: [Download](#)

Applications

Western Blot (Recombinant protein)

[Protocol Download](#)

ELISA

Gene Information

Entrez GeneID: [1811](#)

GeneBank Accession#: [NM_000111](#)

Protein [NP_000102](#)

Accession#:

Gene Name: SLC26A3

Gene Alias: CLD,DRA

Gene solute carrier family 26, member 3

Description:

Omim ID: [126650](#)

Gene Ontology: [Hyperlink](#)

Gene Summary: The protein encoded by this gene is a transmembrane glycoprotein that transports chloride ions across the cell membrane in exchange for bicarbonate ions. It is localized to the mucosa of the lower intestinal tract, particularly to the apical membrane of columnar epithelium and some goblet cells. The protein is essential for intestinal chloride absorption, and mutations in this gene have been associated with congenital chloride diarrhea. [provided by RefSeq]

Other down-regulated in adenoma protein

Designations:

Related Disease

[Colitis, Ulcerative Disease Susceptibility Genetic Predisposition to Disease](#)

[服務條款](#) | [隱私權政策](#) | [著作及商標](#) | [網站地圖](#)

©2016 亞諾法生技股份有限公司 Abnova Corporation. 版權所有.