



SZABO SCANDIC

Part of Europa Biosite

Produktinformation



Forschungsprodukte & Biochemikalien



Zellkultur & Verbrauchsmaterial



Diagnostik & molekulare Diagnostik



Laborgeräte & Service

Weitere Information auf den folgenden Seiten!
See the following pages for more information!



Lieferung & Zahlungsart

siehe unsere [Liefer- und Versandbedingungen](#)

Zuschläge

- Mindermengenzuschlag
- Trockeneiszuschlag
- Gefahrgutzuschlag
- Expressversand

SZABO-SCANDIC HandelsgmbH

Quellenstraße 110, A-1100 Wien

T. +43(0)1 489 3961-0

F. +43(0)1 489 3961-7

mail@szabo-scandic.com

www.szabo-scandic.com

[linkedin.com/company/szaboscandic](https://www.linkedin.com/company/szaboscandic) 

SLC26A3 monoclonal antibody (M01), clone 2E3

Catalog # : H00001811-M01

規格 : [100 ug]

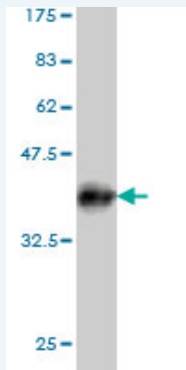
[List All](#)

Specification

Product Description:	Mouse monoclonal antibody raised against a partial recombinant SLC26A3.
Immunogen:	SLC26A3 (NP_000102, 503 a.a. ~ 600 a.a) partial recombinant protein with GST tag. MW of the GST tag alone is 26 KDa.
Sequence:	TQFPKCSTLANIGRTNIYKNKKDYDMYEPEGVKIFRCPSPIYFANIGFFR RKLIDAVGFSPLRILRKRNKALRKRKIRKLQKQGLLQVTPKGFICTVDT
Host:	Mouse
Reactivity:	Human
Isotype:	IgG2a Kappa

Quality Control Antibody Reactive Against Recombinant Protein.

Testing:



Western Blot detection against Immunogen (36.52 KDa) .

Storage Buffer: In 1x PBS, pH 7.4

Storage Instruction: Store at -20°C or lower. Aliquot to avoid repeated freezing and thawing.

MSDS: [Download](#)

Datasheet: [Download](#)

Publication Reference

1. [ION TRANSPORT MECHANISMS LINKED TO BICARBONATE SECRETION IN THE ESOPHAGEAL SUBMUCOSAL GLANDS.](#)
Abdulnour-Nakhoul S, Nakhoul HN, Kalliny MI, Gyftopoulos A, Rabon E, Doetjes R, Brown K, Nakhoul NL. *Am J Physiol Regul Integr Comp Physiol.* 2011 Apr 6. [Epub ahead of print]

Applications

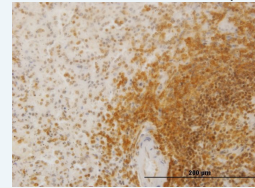
Western Blot (Recombinant protein)

[Protocol Download](#)

Application Image

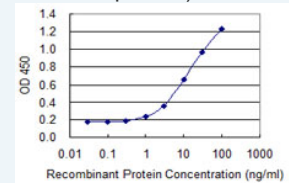
Western Blot (Recombinant protein)

Immunohistochemistry (Formalin/PFA-fixed paraffin-embedded sections)



[enlarge](#)

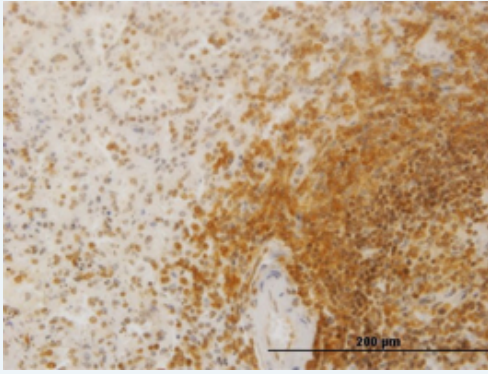
Sandwich ELISA (Recombinant protein)



[enlarge](#)

ELISA

Immunohistochemistry (Formalin/PFA-fixed paraffin-embedded sections)

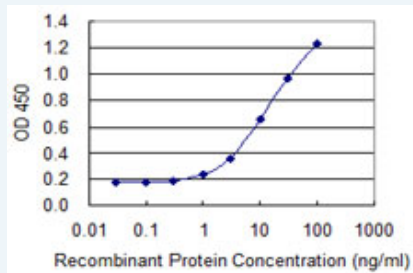


[enlarge this image](#)

Immunoperoxidase of monoclonal antibody to SLC26A3 on formalin-fixed paraffin-embedded human spleen. [antibody concentration 1.8 ug/ml]

[Protocol Download](#)

Sandwich ELISA (Recombinant protein)



Detection limit for recombinant GST tagged SLC26A3 is 0.3 ng/ml as a capture antibody.

[Protocol Download](#)

ELISA

Gene Information

Entrez GeneID: [1811](#)

GeneBank Accession#: [NM_000111](#)

Protein Accession#: [NP_000102](#)

Gene Name: SLC26A3

Gene Alias: CLD,DRA

Gene Description: solute carrier family 26, member 3

Omim ID: [126650](#)

Gene Ontology: [Hyperlink](#)

Gene Summary: The protein encoded by this gene is a transmembrane glycoprotein that transports chloride ions across the cell membrane in exchange for bicarbonate ions. It is localized to the mucosa of the lower intestinal tract, particularly to the apical membrane of columnar epithelium and some goblet cells. The protein is essential for intestinal chloride absorption, and mutations in this gene have been associated with congenital chloride diarrhea. [provided by RefSeq]

Other Designations: down-regulated in adenoma protein

Related Disease

[Colitis](#), [Ulcerative Disease](#) [Susceptibility](#) [Genetic Predisposition to Disease](#)

[服務條款](#) | [隱私權政策](#) | [著作及商標](#) | [網站地圖](#)

©2016 亞諾法生技股份有限公司 Abnova Corporation. 版權所有.