



SZABO SCANDIC

Part of Europa Biosite

Produktinformation



Forschungsprodukte & Biochemikalien



Zellkultur & Verbrauchsmaterial



Diagnostik & molekulare Diagnostik



Laborgeräte & Service

Weitere Information auf den folgenden Seiten!
See the following pages for more information!



Lieferung & Zahlungsart

siehe unsere [Liefer- und Versandbedingungen](#)

Zuschläge

- Mindermengenzuschlag
- Trockeneiszuschlag
- Gefahrgutzuschlag
- Expressversand

SZABO-SCANDIC HandelsgmbH

Quellenstraße 110, A-1100 Wien

T. +43(0)1 489 3961-0

F. +43(0)1 489 3961-7

mail@szabo-scandic.com

www.szabo-scandic.com

[linkedin.com/company/szaboscandic](https://www.linkedin.com/company/szaboscandic) 

SLC26A2 monoclonal antibody (M04), clone 3F6

Catalog # : H00001836-M04

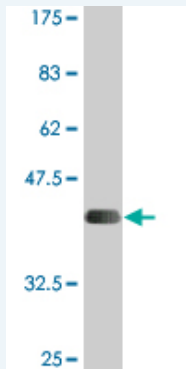
規格 : [100 ug]

[List All](#)

Specification

Product Description:	Mouse monoclonal antibody raised against a partial recombinant SLC26A2.
Immunogen:	SLC26A2 (NP_000103.1, 1 a.a. ~ 108 a.a) partial recombinant protein with GST tag. MW of the GST tag alone is 26 KDa.
Sequence:	MSESKEQHNVSPRDSAEGNDSYPSGIHLELQRESSTDFKQFETNDQC RPYHRILIERQEKSDTNFKEFVIKLLQKNCQCSPAKAKNMILGFLPVLQWL PKYDLKKNL
Host:	Mouse
Reactivity:	Human
Isotype:	IgG2b Kappa

Quality Control Testing: Antibody Reactive Against Recombinant Protein.



Western Blot detection against Immunogen (37.62 KDa) .

Storage Buffer: In 1x PBS, pH 7.4

Storage Instruction: Store at -20°C or lower. Aliquot to avoid repeated freezing and thawing.

MSDS: [Download](#)

Datasheet: [Download](#)

Publication Reference

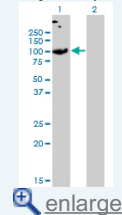
1. [Epigenetic Silencing of the Sulfate Transporter Gene DTDST Induces Sialyl Lewisx Expression and Accelerates Proliferation of Colon Cancer Cells.](#)
Yusa A, Miyazaki K, Kimura N, Izawa M, Kannagi R. *Cancer Res.* 2010 May 15;70(10):4064-73. Epub 2010 May 11.

Applications

Western Blot (Transfected lysate)

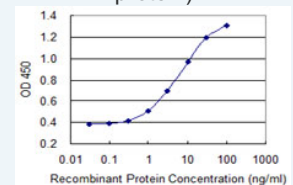
Application Image

Western Blot (Transfected lysate)

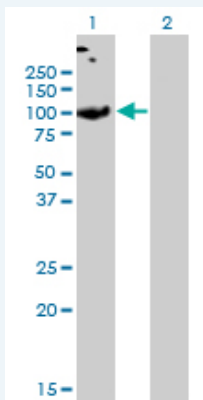


Western Blot (Recombinant protein)

Sandwich ELISA (Recombinant protein)



ELISA



Western Blot analysis of SLC26A2 expression in transfected 293T cell line by SLC26A2 monoclonal antibody (M04), clone 3F6.

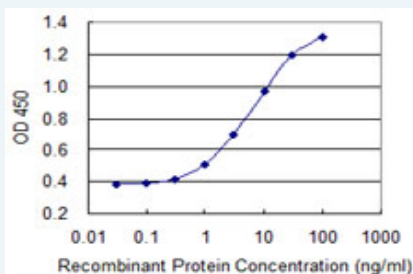
Lane 1: SLC26A2 transfected lysate(81.6 KDa).
Lane 2: Non-transfected lysate.

[Protocol Download](#)

Western Blot (Recombinant protein)

[Protocol Download](#)

Sandwich ELISA (Recombinant protein)



Detection limit for recombinant GST tagged SLC26A2 is 0.1 ng/ml as a capture antibody.

[Protocol Download](#)

ELISA

Gene Information

Entrez GeneID: [1836](#)

GeneBank [NM_000112](#)

Accession#:

Protein [NP_000103.1](#)

Accession#:

Gene Name: SLC26A2

Gene Alias: D5S1708,DTD,DTDST,EDM4,MST153,MSTP157

Gene Description: solute carrier family 26 (sulfate transporter), member 2

Omim ID: [222600](#), [226900](#), [256050](#), [600972](#), [606718](#)

Gene Ontology: [Hyperlink](#)

Gene Summary: The diastrophic dysplasia sulfate transporter is a transmembrane glycoprotein implicated in the pathogenesis of several human chondrodysplasias. It apparently is critical in cartilage for sulfation of proteoglycans and matrix organization. [provided by RefSeq]

Other diastrophic dysplasia sulfate transporter,solute carrier family 26

Designations: member 2,sulfate anion transporter 1

Related Disease

[Arthritis, Juvenile Rheumatoid Bone Diseases](#) [Cleft Lip](#) [Cleft Palate](#) [Diastrophic dysplasia](#)
[Genetic Predisposition to Disease](#) [Osteoarthritis, Knee](#) [Osteochondrodysplasias](#)
[Osteoporosis](#) [Scoliosis](#)

[服務條款](#) | [隱私權政策](#) | [著作及商標](#) | [網站地圖](#)

©2016 亞諾法生技股份有限公司 Abnova Corporation. 版權所有.