



# SZABO SCANDIC

Part of Europa Biosite

## Produktinformation



Forschungsprodukte & Biochemikalien



Zellkultur & Verbrauchsmaterial



Diagnostik & molekulare Diagnostik



Laborgeräte & Service

Weitere Information auf den folgenden Seiten!  
See the following pages for more information!



### Lieferung & Zahlungsart

siehe unsere [Liefer- und Versandbedingungen](#)

### Zuschläge

- Mindermengenzuschlag
- Trockeneiszuschlag
- Gefahrgutzuschlag
- Expressversand

### SZABO-SCANDIC HandelsgmbH

Quellenstraße 110, A-1100 Wien

T. +43(0)1 489 3961-0

F. +43(0)1 489 3961-7

[mail@szabo-scandic.com](mailto:mail@szabo-scandic.com)

[www.szabo-scandic.com](http://www.szabo-scandic.com)

[linkedin.com/company/szaboscandic](https://www.linkedin.com/company/szaboscandic) 

## DUSP6 purified MaxPab mouse polyclonal antibody (B01P) MaxPab®

Catalog # : H00001848-B01P

規格 : [ 50 ug ]

[List All](#)

### Specification

**Product Description:** Mouse polyclonal antibody raised against a full-length human DUSP6 protein.

**Immunogen:** DUSP6 (NP\_001937, 1 a.a. ~ 381 a.a) full-length human protein.

**Sequence:**  
 MIDTLRPVFASEMAISKTVAWLNEQLELGNERLLLMDCRPQEL YESSHI  
 ESAINVAIPGIMLRRRLQKGNLPVRLAFTRGEDRDRFTRRCGTDTVVLYDE  
 SSSDWNENTGGESVLGLLLKLLKDEGCRAFYLEGGFSKFQAEFSLHCE  
 TNLDGSCSSSSPPLPVLGLGGLRISDSSSDIESDLDRDPNSATDSDGSP  
 LSNSQPSFPVEILPFLYLGC AKDSTNLDVLEEFGIKYLNVTPNLPNLFENA  
 GEFKYKQIPISDHWSQNL SQFFPEAISFIDEARGKNCGVLVHCLAGISRSV  
 TVTVAYLMQKLNLSMNDAYDIVKMKKSNISPNFNFMGQLLDFERTLGLSS  
 PCDNRVPAQQLYFTTPSNQNVYQVDSLQST

**Host:** Mouse

**Reactivity:** Human

**Quality Control Testing:** Antibody reactive against mammalian transfected lysate.

**Storage Buffer:** In 1x PBS, pH 7.4

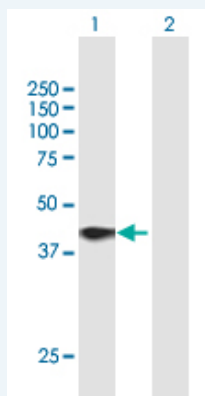
**Storage Instruction:** Store at -20°C or lower. Aliquot to avoid repeated freezing and thawing.

**MSDS:** [Download](#)

**Datasheet:** [Download](#)

### Applications

#### Western Blot (Transfected lysate)



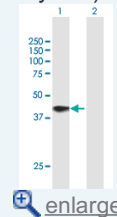
Western Blot analysis of DUSP6 expression in transfected 293T cell line ([H00001848-T01](#)) by DUSP6 MaxPab polyclonal antibody.

Lane 1: DUSP6 transfected lysate(41.91 KDa).

Lane 2: Non-transfected lysate.

### Application Image

Western Blot (Transfected lysate)



[enlarge](#)

[Protocol Download](#)

## Gene Information

---

**Entrez GeneID:** [1848](#)

---

**GeneBank  
Accession#:** [NM\\_001946](#)

---

**Protein  
Accession#:** [NP\\_001937](#)

---

**Gene Name:** DUSP6

---

**Gene Alias:** MKP3,PYST1

---

**Gene  
Description:** dual specificity phosphatase 6

---

**Omim ID:** [602748](#)

---

**Gene Ontology:** [Hyperlink](#)

---

**Gene Summary:** The protein encoded by this gene is a member of the dual specificity protein phosphatase subfamily. These phosphatases inactivate their target kinases by dephosphorylating both the phosphoserine/threonine and phosphotyrosine residues. They negatively regulate members of the mitogen-activated protein (MAP) kinase superfamily (MAPK/ERK, SAPK/JNK, p38), which are associated with cellular proliferation and differentiation. Different members of the family of dual specificity phosphatases show distinct substrate specificities for various MAP kinases, different tissue distribution and subcellular localization, and different modes of inducibility of their expression by extracellular stimuli. This gene product inactivates ERK2, is expressed in a variety of tissues with the highest levels in heart and pancreas, and unlike most other members of this family, is localized in the cytoplasm. Two transcript variants encoding different isoforms have been found for this gene. [provided by RefSeq]

---

**Other  
Designations:** MAP kinase phosphatase 3,serine/threonine specific protein phosphatase

---

## Gene Pathway

---

[MAPK signaling pathway](#)

## Related Disease

---

[Bipolar Disorder](#) [Cardiovascular Diseases](#) [Diabetes Mellitus, Type 2](#) [Edema](#)  
[Genetic Predisposition to Disease](#) [Kidney Failure, Chronic](#)