



SZABO SCANDIC

Part of Europa Biosite

Produktinformation



Forschungsprodukte & Biochemikalien



Zellkultur & Verbrauchsmaterial



Diagnostik & molekulare Diagnostik



Laborgeräte & Service

Weitere Information auf den folgenden Seiten!
See the following pages for more information!



Lieferung & Zahlungsart

siehe unsere [Liefer- und Versandbedingungen](#)

Zuschläge

- Mindermengenzuschlag
- Trockeneiszuschlag
- Gefahrgutzuschlag
- Expressversand

SZABO-SCANDIC HandelsgmbH

Quellenstraße 110, A-1100 Wien

T. +43(0)1 489 3961-0

F. +43(0)1 489 3961-7

mail@szabo-scandic.com

www.szabo-scandic.com

[linkedin.com/company/szaboscandic](https://www.linkedin.com/company/szaboscandic) 

DUSP6 monoclonal antibody (M01), clone 3G2

Catalog # : H00001848-M01

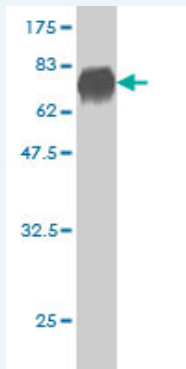
規格 : [100 ug]

List All

Specification

Product Description:	Mouse monoclonal antibody raised against a full length recombinant DUSP6.
Immunogen:	DUSP6 (AAH03143, 1 a.a. ~ 381 a.a) full-length recombinant protein with GST tag. MW of the GST tag alone is 26 KDa.
Sequence:	MIDTLRPVVFASEMAISKTVAWLNEQLELGNERLLLMDCRPQEL YESSHI ESAINVAIPGIMLRRLQKGNLPVRALFTRGEDRDRFTRRCGTDTVLYDE SSSDWNENTGGESLLGLLLKCLKDEGCRAFYLEGGFSKFQAEFLHCE TNLDGSCSSSSPPLPVLGLGGLRISDSSSDIESDLDRDPNSATDSDGSP LSNSQPSFPVEILPFLYLGCARDSTNLDVLEEFGIKYLNVTPNLPNLFENA GEFKYKQIPISDHWSQNLQFFPEAIFIDEARGKNCGLVHCLAGISRSV TVTVAAYLMQKLNLSMNDAYDIVKMKKSINSPNFNFMGQLLDFERTLGLSS PCDNRVPAQQLYFTTSPNQNVYQVDSLQST
Host:	Mouse
Reactivity:	Human
Isotype:	IgG1 Kappa

Quality Control Testing: Antibody Reactive Against Recombinant Protein.



Storage Buffer: In 1x PBS, pH 7.4

Storage Instruction: Store at -20°C or lower. Aliquot to avoid repeated freezing and thawing.

MSDS: [Download](#)

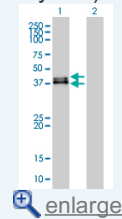
Datasheet: [Download](#)

Publication Reference

- TSH Signaling Overcomes B-RafV600E-Induced Senescence in Papillary Thyroid Carcinogenesis through Regulation of DUSP6.
Kim YH, Choi YW, Han JH, Lee J, Soh EY, Park SH, Kim JH, Park TJ. *Neoplasia*. 2014 Dec;16(12):1107-20.
- Dual specificity phosphatase 6 as a predictor of invasiveness in papillary thyroid

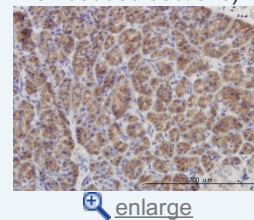
Application Image

Western Blot (Transfected lysate)



Western Blot (Recombinant protein)

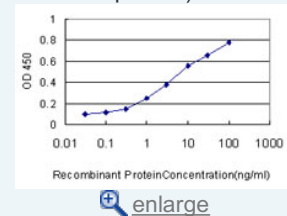
Immunohistochemistry (Formalin/PFA-fixed paraffin-embedded sections)



Immunofluorescence

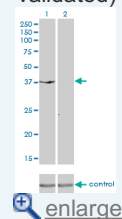


Sandwich ELISA (Recombinant protein)



ELISA

RNAi Knockdown (Antibody validated)



cancer.

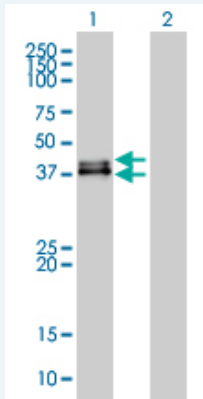
Lee JU, Huang S, Lee MH, Lee SE, Ryu MJ, Kim SJ, Kim YK, Kim SY, Joung KH, Kim JM, Shong M, Jo YS. Eur J Endocrinol. 2012 Jul;167(1):93-101. Epub 2012 Apr 25.

3. Down-Regulation of DUSP6 Expression in Lung Cancer: Its Mechanism and Potential Role in Carcinogenesis.

Okudela K, Yazawa T, Woo T, Sakaeda M, Ishii J, Mitsui H, Shimoyamada H, Sato H, Tajiri M, Ogawa N, Masuda M, Takahashi T, Sugimura H, Kitamura H. Am J Pathol. 2009 Aug;175(2):867-81. Epub 2009 Jul 16.

Applications


Western Blot (Transfected lysate)




Western Blot analysis of DUSP6 expression in transfected 293T cell line by DUSP6 monoclonal antibody (M01), clone 3G2.

Lane 1: DUSP6 transfected lysate (42 kDa).

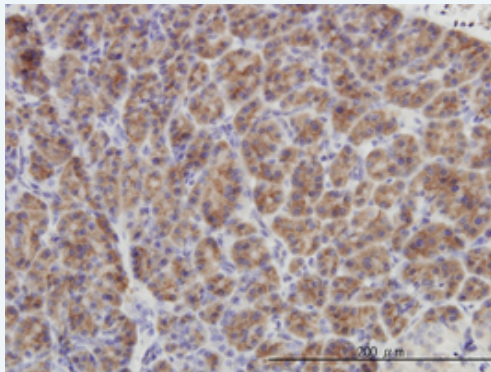
Lane 2: Non-transfected lysate.

 [Protocol Download](#)

Western Blot (Recombinant protein)

 [Protocol Download](#)

Immunohistochemistry (Formalin/PFA-fixed paraffin-embedded sections)

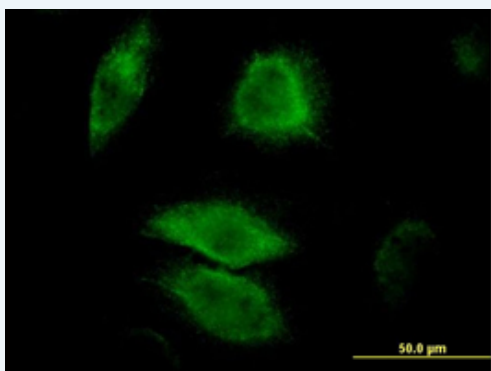



 [enlarge this image](#)

Immunoperoxidase of monoclonal antibody to DUSP6 on formalin-fixed paraffin-embedded human pancreas. [antibody concentration 3 ug/ml]

 [Protocol Download](#)

Immunofluorescence



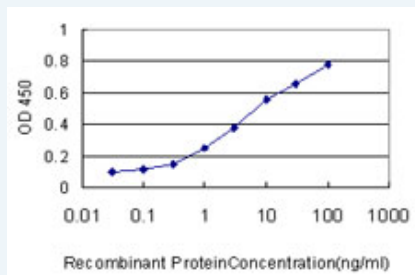
 [enlarge this image](#)

Immunofluorescence of monoclonal antibody to DUSP6 on HeLa cell. [antibody

concentration 10 ug/ml]

 [Protocol Download](#)

Sandwich ELISA (Recombinant protein)

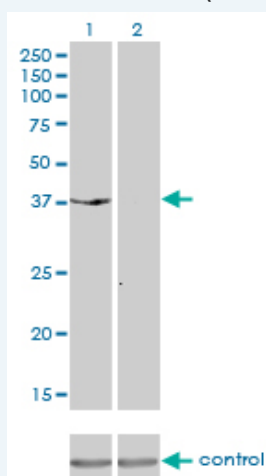


Detection limit for recombinant GST tagged DUSP6 is approximately 1ng/ml as a capture antibody.

 [Protocol Download](#)

ELISA

RNAi Knockdown (Antibody validated)



Western blot analysis of DUSP6 over-expressed 293 cell line, cotransfected with DUSP6 Validated Chimera RNAi (Cat # H00001848-R01V) (Lane 2) or non-transfected control (Lane 1). Blot probed with DUSP6 monoclonal antibody (M01), clone 3G2 (Cat # H00001848-M01). GAPDH (36.1 kDa) used as specificity and loading control.

 [Protocol Download](#)

Gene Information

Entrez GeneID: [1848](#)

GeneBank [BC003143](#)

Accession#:

Protein [AAH03143](#)

Accession#:

Gene Name: DUSP6

Gene Alias: MKP3,PYST1

Gene Description: dual specificity phosphatase 6

Omim ID: [602748](#)

Gene Ontology: [Hyperlink](#)

Gene Summary: The protein encoded by this gene is a member of the dual specificity protein phosphatase subfamily. These phosphatases inactivate their target kinases by dephosphorylating both the phosphoserine/threonine

and phosphotyrosine residues. They negatively regulate members of the mitogen-activated protein (MAP) kinase superfamily (MAPK/ERK, SAPK/JNK, p38), which are associated with cellular proliferation and differentiation. Different members of the family of dual specificity phosphatases show distinct substrate specificities for various MAP kinases, different tissue distribution and subcellular localization, and different modes of inducibility of their expression by extracellular stimuli. This gene product inactivates ERK2, is expressed in a variety of tissues with the highest levels in heart and pancreas, and unlike most other members of this family, is localized in the cytoplasm. Two transcript variants encoding different isoforms have been found for this gene. [provided by RefSeq

Other Designations: MAP kinase phosphatase 3,serine/threonine specific protein phosphatase

Gene Pathway

[MAPK signaling pathway](#)

Related Disease

[Bipolar Disorder](#) [Cardiovascular Diseases](#) [Diabetes Mellitus, Type 2](#) [Edema](#)
[Genetic Predisposition to Disease](#) [Kidney Failure, Chronic](#)

[服務條款](#) | [隱私權政策](#) | [著作及商標](#) | [網站地圖](#)

©2016 亞諾法生技股份有限公司 Abnova Corporation. 版權所有.