



# SZABO SCANDIC

Part of Europa Biosite

## Produktinformation



Forschungsprodukte & Biochemikalien



Zellkultur & Verbrauchsmaterial



Diagnostik & molekulare Diagnostik



Laborgeräte & Service

Weitere Information auf den folgenden Seiten!  
See the following pages for more information!



### Lieferung & Zahlungsart

siehe unsere [Liefer- und Versandbedingungen](#)

### Zuschläge

- Mindermengenzuschlag
- Trockeneiszuschlag
- Gefahrgutzuschlag
- Expressversand

### SZABO-SCANDIC HandelsgmbH

Quellenstraße 110, A-1100 Wien

T. +43(0)1 489 3961-0

F. +43(0)1 489 3961-7

[mail@szabo-scandic.com](mailto:mail@szabo-scandic.com)

[www.szabo-scandic.com](http://www.szabo-scandic.com)

[linkedin.com/company/szaboscandic](https://www.linkedin.com/company/szaboscandic) 

## DUSP6 293T Cell Transient Overexpression Lysate(Denatured)

Catalog # : H00001848-T02

規格 : [ 100 uL ]

[List All](#)

### Specification

**Transfected Cell Line:** 293T

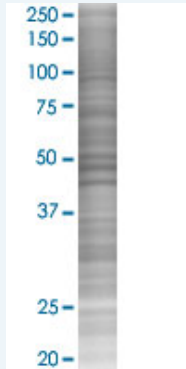
**Plasmid:** pCMV-DUSP6 full-length

**Host:** Human

**Theoretical MW (kDa):** 42.3

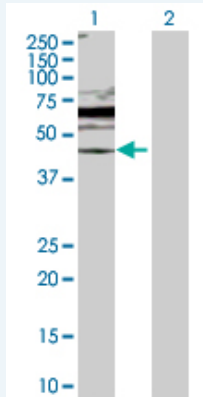
**Quality Control Testing:** Transient overexpression cell lysate was tested with Anti-DUSP6 antibody ([H00001848-D01P](#)) by Western Blots.

#### SDS-PAGE Gel



DUSP6 transfected lysate.

#### Western Blot



Lane 1: DUSP6 transfected lysate ( 42.30 KDa)

Lane 2: Non-transfected lysate.

**Storage Buffer:** 1X Sample Buffer (50 mM Tris-HCl, 2% SDS, 10% glycerol, 300 mM 2-mercaptoethanol, 0.01% Bromophenol blue)

**Storage Instruction:** Store at -80°C. Aliquot to avoid repeated freezing and thawing.

**MSDS:**  [Download](#)

### Applications

### Application Image

Western Blot

## Western Blot

### Gene Information

Entrez GeneID: [1848](#)

GeneBank [NM\\_001946](#)  
Accession#:

Protein [NP\\_001937.2](#)  
Accession#:

Gene Name: DUSP6

Gene Alias: MKP3,PYST1

Gene Description: dual specificity phosphatase 6

Omim ID: [602748](#)

Gene Ontology: [Hyperlink](#)

**Gene Summary:** The protein encoded by this gene is a member of the dual specificity protein phosphatase subfamily. These phosphatases inactivate their target kinases by dephosphorylating both the phosphoserine/threonine and phosphotyrosine residues. They negatively regulate members of the mitogen-activated protein (MAP) kinase superfamily (MAPK/ERK, SAPK/JNK, p38), which are associated with cellular proliferation and differentiation. Different members of the family of dual specificity phosphatases show distinct substrate specificities for various MAP kinases, different tissue distribution and subcellular localization, and different modes of inducibility of their expression by extracellular stimuli. This gene product inactivates ERK2, is expressed in a variety of tissues with the highest levels in heart and pancreas, and unlike most other members of this family, is localized in the cytoplasm. Two transcript variants encoding different isoforms have been found for this gene. [provided by RefSeq]

Other Designations: MAP kinase phosphatase 3,serine/threonine specific protein phosphatase

### Gene Pathway

[MAPK signaling pathway](#)

### Related Disease

[Bipolar Disorder](#) [Cardiovascular Diseases](#) [Diabetes Mellitus, Type 2](#) [Edema](#)  
[Genetic Predisposition to Disease](#) [Kidney Failure, Chronic](#)