



SZABO SCANDIC

Part of Europa Biosite

Produktinformation



Forschungsprodukte & Biochemikalien



Zellkultur & Verbrauchsmaterial



Diagnostik & molekulare Diagnostik



Laborgeräte & Service

Weitere Information auf den folgenden Seiten!
See the following pages for more information!



Lieferung & Zahlungsart

siehe unsere [Liefer- und Versandbedingungen](#)

Zuschläge

- Mindermengenzuschlag
- Trockeneiszuschlag
- Gefahrgutzuschlag
- Expressversand

SZABO-SCANDIC HandelsgmbH

Quellenstraße 110, A-1100 Wien

T. +43(0)1 489 3961-0

F. +43(0)1 489 3961-7

mail@szabo-scandic.com

www.szabo-scandic.com

[linkedin.com/company/szaboscandic](https://www.linkedin.com/company/szaboscandic) 

DVL1 polyclonal antibody (A01)

Catalog # : H00001855-A01

規格 : [50 uL]

List All

Specification

Product Description: Mouse polyclonal antibody raised against a partial recombinant DVL1.

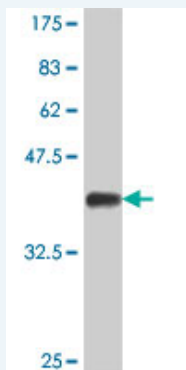
Immunogen: DVL1 (NP_877580, 1 a.a. ~ 110 a.a) partial recombinant protein with GST tag.

Sequence: MAETKIYHMDEEETPYLVKLPVAPERVTLADFKNVLNRPVHAYKFFFKS
MDQDFGVVKEEIFDDNAKLPCFNRRVSWLVLAEGAHSDAGSQGTDSH
TDLPPPLERTG

Host: Mouse

Reactivity: Human

Quality Control Testing: Antibody Reactive Against Recombinant Protein.



Western Blot detection against Immunogen (38.21 KDa) .

Storage Buffer: 50 % glycerol

Storage Instruction: Store at -20°C or lower. Aliquot to avoid repeated freezing and thawing.

MSDS: [Download](#)

Datasheet: [Download](#)

Publication Reference

1. [Novel markers for differentiation of lobular and ductal invasive breast carcinomas by laser microdissection and microarray analysis.](#)
Turashvili G, Bouchal J, Baumforth K, Wei W, Dziechciarkova M, Ehrmann J, Klein J, Fridman E, Skarda J, Srovnal J, Hajduch M, Murray P, Kolar Z. BMC Cancer. 2007 Mar 27;7:55.

Applications

Western Blot (Recombinant protein)

[Protocol Download](#)

ELISA

Application Image

Western Blot (Recombinant protein)

ELISA

Gene Information

Entrez GeneID: [1855](#)

**GeneBank
Accession#:** [NM_182779](#)

**Protein
Accession#:** [NP_877580](#)

Gene Name: DVL1

Gene Alias: DVL,MGC54245

**Gene
Description:** dishevelled, dsh homolog 1 (Drosophila)

Omim ID: [601365](#)

Gene Ontology: [Hyperlink](#)

Gene Summary: DVL1, the human homolog of the Drosophila dishevelled gene (dsh) encodes a cytoplasmic phosphoprotein that regulates cell proliferation, acting as a transducer molecule for developmental processes, including segmentation and neuroblast specification. DVL1 is a candidate gene for neuroblastomatous transformation. The Schwartz-Jampel syndrome and Charcot-Marie-Tooth disease type 2A have been mapped to the same region as DVL1. The phenotypes of these diseases may be consistent with defects which might be expected from aberrant expression of a DVL gene during development. [provided by RefSeq]

**Other
Designations:** OTTHUMP00000003104,dishevelled 1,dishevelled 1 (homologous to Drosophila dsh)

Gene Pathway

[Basal cell carcinoma](#) [Colorectal cancer](#) [Melanogenesis](#) [Notch signaling pathway](#)
[Pathways in cancer](#) [Wnt signaling pathway](#)

Related Disease

[Alzheimer Disease](#) [Alzheimer disease](#) [Cleft Lip](#) [Cleft Palate](#)

[服務條款](#) | [隱私權政策](#) | [著作及商標](#) | [網站地圖](#)

©2016 亞諾法生技股份有限公司 Abnova Corporation. 版權所有.