



SZABO SCANDIC

Part of Europa Biosite

Produktinformation



Forschungsprodukte & Biochemikalien



Zellkultur & Verbrauchsmaterial



Diagnostik & molekulare Diagnostik



Laborgeräte & Service

Weitere Information auf den folgenden Seiten!
See the following pages for more information!



Lieferung & Zahlungsart

siehe unsere [Liefer- und Versandbedingungen](#)

Zuschläge

- Mindermengenzuschlag
- Trockeneiszuschlag
- Gefahrgutzuschlag
- Expressversand

SZABO-SCANDIC HandelsgmbH

Quellenstraße 110, A-1100 Wien

T. +43(0)1 489 3961-0

F. +43(0)1 489 3961-7

mail@szabo-scandic.com

www.szabo-scandic.com

[linkedin.com/company/szaboscandic](https://www.linkedin.com/company/szaboscandic) 

DVL1 purified MaxPab mouse polyclonal antibody (B01P) MaxPab®

Catalog # : H00001855-B01P

規格 : [50 ug]

[List All](#)

Specification

Product Description: Mouse polyclonal antibody raised against a full-length human DVL1 protein.

Immunogen: DVL1 (NP_877580.1, 1 a.a. ~ 444 a.a) full-length human protein.

Sequence:
 MAETKIYHMDEEETPYLVKLPVAPERVTLADFKNVLNRPVHAYKFFFKS
 MDQDFGVVKEEIFDDNAKLPCFNDRVSWLVLAEGAHS DAGSQGTDSH
 TDLPPPLERTGGIGDSRPPSFHPNVASSRDGMDNETGTESMVSHRRER
 ARRRNREEAARTNGHPRGDRRRDVGLPPDSASTALSSELESSFVSD
 EDGSTSRLSSSTEQSTSSRLTRKYASSLLKHGFLRHTV NKITFSEQCYV
 FGDLCNLATLNLNSGSSGTS DQDTLAPLPHPAAPWPLGQGYPYQYPG
 PPPCFPPAYQDPGFSYGGSGTGSQQSEGSKSSGSTRSSRRAPGREKE
 RRAAGAGGSGSESDHTAPSGVGSWRERPAGQLSRGSSPRSQASATA
 PGLPPPHPTTKAYTVVGGPPGPPVRELA AVPELTGSRQSFQKAMGN
 PCEFFVDIM

Host: Mouse

Reactivity: Human

Quality Control Testing: Antibody reactive against mammalian transfected lysate.

Storage Buffer: In 1x PBS, pH 7.4

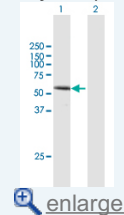
Storage Instruction: Store at -20°C or lower. Aliquot to avoid repeated freezing and thawing.


MSDS:  [Download](#)

Datasheet:  [Download](#)

Application Image

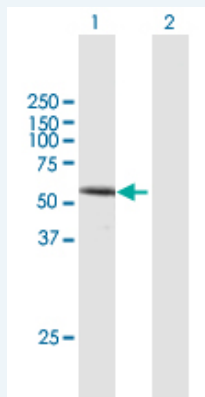
Western Blot (Transfected lysate)



 [enlarge](#)

Applications

Western Blot (Transfected lysate)



Western Blot analysis of DVL1 expression in transfected 293T cell line ([H00001855-T01](#)) by DVL1 MaxPab polyclonal antibody.

Lane 1: DVL1 transfected lysate(48.84 KDa).
 Lane 2: Non-transfected lysate.

Gene Information

Entrez GeneID: [1855](#)

GeneBank Accession#: [NM_182779.2](#)

Protein Accession#: [NP_877580.1](#)

Gene Name: DVL1

Gene Alias: DVL,MGC54245

Gene Description: dishevelled, dsh homolog 1 (Drosophila)

Omim ID: [601365](#)

Gene Ontology: [Hyperlink](#)

Gene Summary: DVL1, the human homolog of the Drosophila dishevelled gene (dsh) encodes a cytoplasmic phosphoprotein that regulates cell proliferation, acting as a transducer molecule for developmental processes, including segmentation and neuroblast specification. DVL1 is a candidate gene for neuroblastomatous transformation. The Schwartz-Jampel syndrome and Charcot-Marie-Tooth disease type 2A have been mapped to the same region as DVL1. The phenotypes of these diseases may be consistent with defects which might be expected from aberrant expression of a DVL gene during development. [provided by RefSeq]

Other Designations: OTTHUMP00000003104,dishevelled 1,dishevelled 1 (homologous to Drosophila dsh)

Gene Pathway

[Basal cell carcinoma](#) [Colorectal cancer](#) [Melanogenesis](#) [Notch signaling pathway](#)
[Pathways in cancer](#) [Wnt signaling pathway](#)

Related Disease

[Alzheimer Disease](#) [Alzheimer disease](#) [Cleft Lip](#) [Cleft Palate](#)