



# SZABO SCANDIC

Part of Europa Biosite

## Produktinformation



Forschungsprodukte & Biochemikalien



Zellkultur & Verbrauchsmaterial



Diagnostik & molekulare Diagnostik



Laborgeräte & Service

Weitere Information auf den folgenden Seiten!  
See the following pages for more information!



### Lieferung & Zahlungsart

siehe unsere [Liefer- und Versandbedingungen](#)

### Zuschläge

- Mindermengenzuschlag
- Trockeneiszuschlag
- Gefahrgutzuschlag
- Expressversand

### SZABO-SCANDIC HandelsgmbH

Quellenstraße 110, A-1100 Wien

T. +43(0)1 489 3961-0

F. +43(0)1 489 3961-7

[mail@szabo-scandic.com](mailto:mail@szabo-scandic.com)

[www.szabo-scandic.com](http://www.szabo-scandic.com)

[linkedin.com/company/szaboscandic](https://www.linkedin.com/company/szaboscandic)

## DVL1 purified MaxPab rabbit polyclonal antibody (D01P) MaxPab®

Catalog # : H00001855-D01P

規格 : [ 100 ug ]

[List All](#)

### Specification

**Product Description:** Rabbit polyclonal antibody raised against a full-length human DVL1 protein.

**Immunogen:** DVL1 (NP\_877580.1, 1 a.a. ~ 444 a.a) full-length human protein.

**Sequence:**  
 MAETKIYHMDEEETPYLVKLPVAPERVTLADFKNVLNRPVHAYKFFFKS  
 MDQDFGVVKEEIFDDNAKLPCFNRRVSWLVLAEGAHS DAGSQGTDSH  
 TDLPPPLERTGGIGDSRPPSFHPNVASSRDGMDNETGTESMVSHRRER  
 ARRRNREEAARTNGHPRGDRRRDVG LPPDSASTALSSELESSFVSD  
 EDGSTSRLSSSTEQSTSSRLTRKYASSLLKHGFLRHTV NKITFSEQCYV  
 FGDLCNLATLNLNSGSSGTS DQDTLAPLPHPAAPWPLGQGYPYQYPG  
 PPPCFPPAYQDPGFSYGGSGTGSQQSEGSKSSGSTRSSRRAPGREKE  
 RRAAGAGGSGSESDHTAPSGVGSWRERPAGQLSRGSSPRSQASATA  
 PGLPPPHPTTKAYTVVGGPPGPPVRELA AVPELTGSRQSFQKAMGN  
 PCEFFVDIM

**Host:** Rabbit

**Reactivity:** Human

**Quality Control Testing:** Antibody reactive against mammalian transfected lysate.

**Storage Buffer:** In 1x PBS, pH 7.4

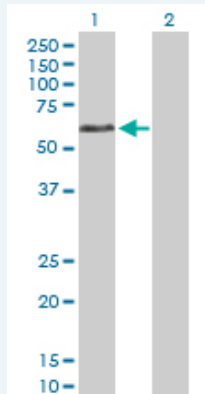
**Storage Instruction:** Store at -20°C or lower. Aliquot to avoid repeated freezing and thawing.

**MSDS:**  [Download](#)

**Datasheet:**  [Download](#)

### Applications

#### Western Blot (Transfected lysate)

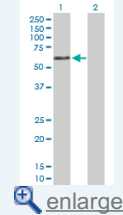


Western Blot analysis of DVL1 expression in transfected 293T cell line ([H00001855-T02](#)) by DVL1 MaxPab polyclonal antibody.

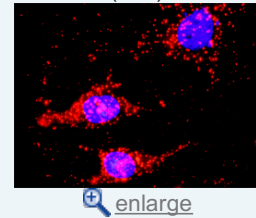
Lane 1: DVL1 transfected lysate(47.70 KDa).  
 Lane 2: Non-transfected lysate.

### Application Image

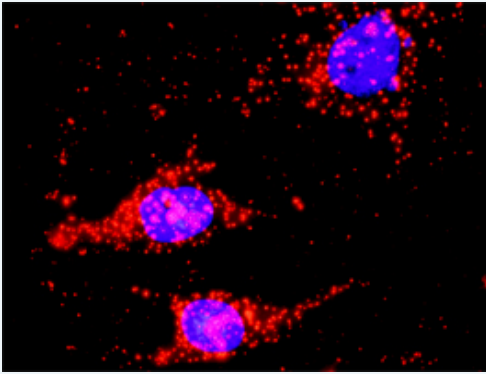
#### Western Blot (Transfected lysate)



#### In situ Proximity Ligation Assay (Cell)



**In situ Proximity Ligation Assay (Cell)**



Proximity Ligation Analysis of protein-protein interactions between DVL1 and CTNNB1. HeLa cells were stained with anti-DVL1 rabbit purified polyclonal 1:1200 and anti-CTNNB1 mouse monoclonal antibody 1:50. Each red dot represents the detection of protein-protein interaction complex, and nuclei were counterstained with DAPI (blue).

**Gene Information**

**Entrez GeneID:** [1855](#)

**GeneBank Accession#:** [NM\\_182779](#)

**Protein Accession#:** [NP\\_877580.1](#)

**Gene Name:** DVL1

**Gene Alias:** DVL,MGC54245

**Gene Description:** dishevelled, dsh homolog 1 (Drosophila)

**Omim ID:** [601365](#)

**Gene Ontology:** [Hyperlink](#)

**Gene Summary:** DVL1, the human homolog of the Drosophila dishevelled gene (dsh) encodes a cytoplasmic phosphoprotein that regulates cell proliferation, acting as a transducer molecule for developmental processes, including segmentation and neuroblast specification. DVL1 is a candidate gene for neuroblastomatous transformation. The Schwartz-Jampel syndrome and Charcot-Marie-Tooth disease type 2A have been mapped to the same region as DVL1. The phenotypes of these diseases may be consistent with defects which might be expected from aberrant expression of a DVL gene during development. [provided by RefSeq]

**Other Designations:** OTTHUMP00000003104,dishevelled 1,dishevelled 1 (homologous to Drosophila dsh)

**Gene Pathway**

[Basal cell carcinoma](#) [Colorectal cancer](#) [Melanogenesis](#) [Notch signaling pathway](#)  
[Pathways in cancer](#) [Wnt signaling pathway](#)

**Related Disease**

[Alzheimer Disease](#) [Alzheimer disease](#) [Cleft Lip](#) [Cleft Palate](#)

