



# SZABO SCANDIC

Part of Europa Biosite

## Produktinformation



Forschungsprodukte & Biochemikalien



Zellkultur & Verbrauchsmaterial



Diagnostik & molekulare Diagnostik



Laborgeräte & Service

Weitere Information auf den folgenden Seiten!  
See the following pages for more information!



### Lieferung & Zahlungsart

siehe unsere [Liefer- und Versandbedingungen](#)

### Zuschläge

- Mindermengenzuschlag
- Trockeneiszuschlag
- Gefahrgutzuschlag
- Expressversand

### SZABO-SCANDIC HandelsgmbH

Quellenstraße 110, A-1100 Wien

T. +43(0)1 489 3961-0

F. +43(0)1 489 3961-7

[mail@szabo-scandic.com](mailto:mail@szabo-scandic.com)

[www.szabo-scandic.com](http://www.szabo-scandic.com)

[linkedin.com/company/szaboscandic](https://www.linkedin.com/company/szaboscandic) 

## DVL1 293T Cell Transient Overexpression Lysate(Denatured)

Catalog # : H00001855-T02

規格 : [ 100 uL ]

[List All](#)

### Specification

**Transfected Cell Line:** 293T

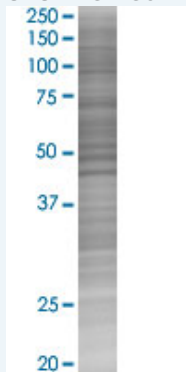
**Plasmid:** pCMV-DVL1 full-length

**Host:** Human

**Theoretical MW (kDa):** 47.7

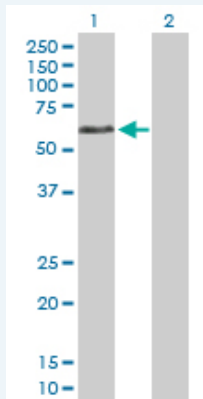
**Quality Control Testing:** Transient overexpression cell lysate was tested with Anti-DVL1 antibody (H00001855-D01P) by Western Blots.

#### SDS-PAGE Gel



DVL1 transfected lysate.

#### Western Blot



Lane 1: DVL1 transfected lysate ( 47.70 KDa)

Lane 2: Non-transfected lysate.

**Storage Buffer:** 1X Sample Buffer (50 mM Tris-HCl, 2% SDS, 10% glycerol, 300 mM 2-mercaptoethanol, 0.01% Bromophenol blue)

**Storage Instruction:** Store at -80°C. Aliquot to avoid repeated freezing and thawing.

**MSDS:**  [Download](#)

### Applications

### Application Image

Western Blot

## Western Blot

### Gene Information

Entrez GeneID: [1855](#)

GeneBank Accession#: [NM\\_182779](#)

Protein Accession#: [NP\\_877580.1](#)

Gene Name: DVL1

Gene Alias: DVL,MGC54245

Gene Description: dishevelled, dsh homolog 1 (Drosophila)

Omim ID: [601365](#)

Gene Ontology: [Hyperlink](#)

**Gene Summary:** DVL1, the human homolog of the Drosophila dishevelled gene (dsh) encodes a cytoplasmic phosphoprotein that regulates cell proliferation, acting as a transducer molecule for developmental processes, including segmentation and neuroblast specification. DVL1 is a candidate gene for neuroblastomatous transformation. The Schwartz-Jampel syndrome and Charcot-Marie-Tooth disease type 2A have been mapped to the same region as DVL1. The phenotypes of these diseases may be consistent with defects which might be expected from aberrant expression of a DVL gene during development. [provided by RefSeq]

Other Designations: OTTHUMP00000003104,dishevelled 1,dishevelled 1 (homologous to Drosophila dsh)

### Gene Pathway

[Basal cell carcinoma](#) [Colorectal cancer](#) [Melanogenesis](#) [Notch signaling pathway](#)  
[Pathways in cancer](#) [Wnt signaling pathway](#)

### Related Disease

[Alzheimer Disease](#) [Alzheimer disease](#) [Cleft Lip](#) [Cleft Palate](#)

[服務條款](#) | [隱私權政策](#) | [著作及商標](#) | [網站地圖](#)

©2016 亞諾法生技股份有限公司 Abnova Corporation. 版權所有.