



SZABO SCANDIC

Part of Europa Biosite

Produktinformation



Forschungsprodukte & Biochemikalien



Zellkultur & Verbrauchsmaterial



Diagnostik & molekulare Diagnostik



Laborgeräte & Service

Weitere Information auf den folgenden Seiten!
See the following pages for more information!



Lieferung & Zahlungsart

siehe unsere [Liefer- und Versandbedingungen](#)

Zuschläge

- Mindermengenzuschlag
- Trockeneiszuschlag
- Gefahrgutzuschlag
- Expressversand

SZABO-SCANDIC HandelsgmbH

Quellenstraße 110, A-1100 Wien

T. +43(0)1 489 3961-0

F. +43(0)1 489 3961-7

mail@szabo-scandic.com

www.szabo-scandic.com

[linkedin.com/company/szaboscandic](https://www.linkedin.com/company/szaboscandic) 

DVL2 MaxPab mouse polyclonal antibody (B01) MaxPab®

Catalog # : H00001856-B01

規格 : [50 uL]

[List All](#)

Specification

Product Description: Mouse polyclonal antibody raised against a full-length human DVL2 protein.

Immunogen: DVL2 (NP_004413, 1 a.a. ~ 736 a.a) full-length human protein.

Sequence:
 MAGSSTGGGGVGETKVIYHLDEEETPYLVKIPVAERITLGDFKSVLQRP
 AGAKYFFKSMQDFGVVKEEISDDNARLPCFNGRVSWLVSSDNPQPE
 MAPPVHEPRAELAPPAPLPLPPERTSGIGDSRPPSFHPNVSSHENLE
 PETETESVSLRRERPRRRDSSEHGAGGHRTGGPSRLERHLAGYESS
 TLMTSELESTSLGDSDEEDTMSRFSSTEQSSASRLKRRRRRQRP
 PRLERTSSFSSVTDSTMSLNITVTLNMEKYNFLGISIVGQSNERGDGGYI
 GSIMKGGAVAADGRIEFGDMLLQVNDMNFENMSNDDAVRVLRDIVHKPG
 PIVLTVAKCWDSPQAYFTLPRNEPIQPIDPAAWVSHSAALTGTFFPAYPG
 SSSMSTITSGSSLPDGCEGRGLSVHTDMASVTKAMAAPESGLEVRDRM
 WLKITIPNAFLGSDVVDWLYHIVEGFPERREARKYASGLLKAGLIRHTVN
 KITFSEQCYVFGDLSGGCESYLVNLSLNDNDGSSGASDQDTLAPLPGA
 TPWPLLPTFSYQYPAPHPYSPQPPYHELSSYTYGGGSASSQHSEGSR
 SSGSTRSDGGAGRTGRPEERAPESKSGSGSESEPSSRGGSLRRGGEA
 SGTSDGGPPPSRGSTGGAPNLRAHPGLHPYGPMPGALPYNPMMVVM
 MPPPPPPVPPAVQPPGAPPVRDLGSPPELTASRQSFHMAMGNPSEFF
 VDVM

Host: Mouse

Reactivity: Human

Quality Control Testing: Antibody reactive against mammalian transfected lysate.

Storage Buffer: No additive

Storage Instruction: Store at -20°C or lower. Aliquot to avoid repeated freezing and thawing.

Note: For IHC and IF applications, antibody purification with Protein A will be needed prior to use.

MSDS: [Download](#)

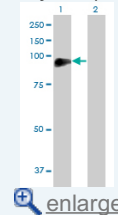
Datasheet: [Download](#)

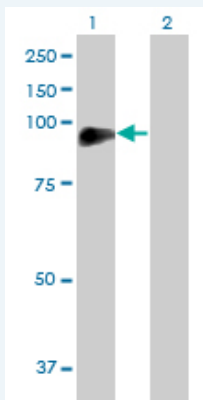
Applications

Western Blot (Transfected lysate)

Application Image

Western Blot (Transfected lysate)





Western Blot analysis of DVL2 expression in transfected 293T cell line ([H00001856-T01](#)) by DVL2 MaxPab polyclonal antibody.

Lane 1: DVL2 transfected lysate(80.96 KDa).
Lane 2: Non-transfected lysate.

 [Protocol Download](#)

Gene Information

Entrez GeneID: [1856](#)

GeneBank Accession#: [NM_004422](#)

Protein Accession#: [NP_004413](#)

Gene Name: DVL2

Gene Alias: -

Gene Description: dishevelled, dsh homolog 2 (Drosophila)

Omim ID: [602151](#)

Gene Ontology: [Hyperlink](#)

Gene Summary: This gene encodes a member of the dishevelled (dsh) protein family. The vertebrate dsh proteins have approximately 40% amino acid sequence similarity with Drosophila dsh. This gene encodes a 90-kD protein that undergoes posttranslational phosphorylation to form a 95-kD cytoplasmic protein, which may play a role in the signal transduction pathway mediated by multiple Wnt proteins. The mechanisms of dishevelled function in Wnt signaling are likely to be conserved among metazoans. [provided by RefSeq]

Other Designations: DSH homolog 2, dishevelled 2, dishevelled 2 (homologous to Drosophila dsh), segment polarity protein dishevelled homolog DVL-2

Gene Pathway

[Basal cell carcinoma](#) [Colorectal cancer](#) [Melanogenesis](#) [Notch signaling pathway](#)
[Pathways in cancer](#) [Wnt signaling pathway](#)

Related Disease

[Cardiovascular Diseases](#) [Depressive Disorder, Major](#) [Diabetes Mellitus, Type 2](#) [Edema](#)
[Genetic Predisposition to Disease](#)

