



SZABO SCANDIC

Part of Europa Biosite

Produktinformation



Forschungsprodukte & Biochemikalien



Zellkultur & Verbrauchsmaterial



Diagnostik & molekulare Diagnostik



Laborgeräte & Service

Weitere Information auf den folgenden Seiten!
See the following pages for more information!



Lieferung & Zahlungsart

siehe unsere [Liefer- und Versandbedingungen](#)

Zuschläge

- Mindermengenzuschlag
- Trockeneiszuschlag
- Gefahrgutzuschlag
- Expressversand

SZABO-SCANDIC HandelsgmbH

Quellenstraße 110, A-1100 Wien

T. +43(0)1 489 3961-0

F. +43(0)1 489 3961-7

mail@szabo-scandic.com

www.szabo-scandic.com

[linkedin.com/company/szaboscandic](https://www.linkedin.com/company/szaboscandic) 

DVL3 monoclonal antibody (M04), clone 4H2

Catalog # : H00001857-M04

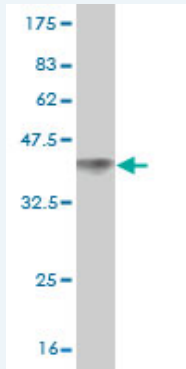
規格 : [50 ug]

[List All](#)

Specification

Product Description:	Mouse monoclonal antibody raised against a partial recombinant DVL3.
Immunogen:	DVL3 (AAH32459, 1 a.a. ~ 100 a.a) partial recombinant protein with GST tag. MW of the GST tag alone is 26 KDa.
Sequence:	MGETKIYHLDGQETPYLVKLPLPAERVTLADFKGVLQRPSYKFFFKSMD DDFGVWKEEISDDNAKLPCFNGRVWSLVSAEGSHDPAPFCADNPSEL P
Host:	Mouse
Reactivity:	Human
Isotype:	IgG1 Kappa

Quality Control Testing: Antibody Reactive Against Recombinant Protein.



Western Blot detection against Immunogen (36.63 KDa) .

Storage Buffer: In 1x PBS, pH 7.4

Storage Instruction: Store at -20°C or lower. Aliquot to avoid repeated freezing and thawing.

MSDS: [Download](#)

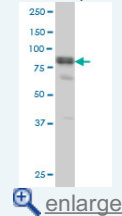
Datasheet: [Download](#)

Applications

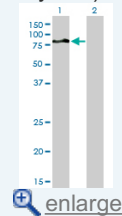
Western Blot (Cell lysate)

Application Image

Western Blot (Cell lysate)

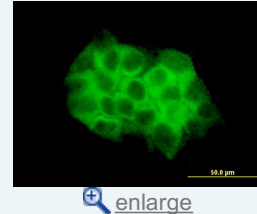


Western Blot (Transfected lysate)

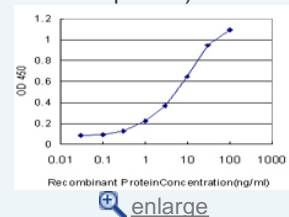


Western Blot (Recombinant protein)

Immunofluorescence

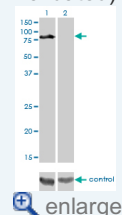


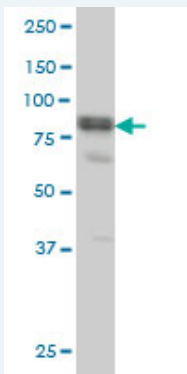
Sandwich ELISA (Recombinant protein)



ELISA

RNAi Knockdown (Antibody validated)

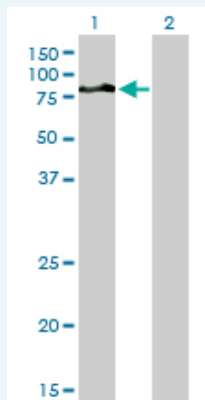




DVL3 monoclonal antibody (M04), clone 4H2 Western Blot analysis of DVL3 expression in A-431 (Cat # L015V1).

 [Protocol Download](#)

Western Blot (Transfected lysate)



Western Blot analysis of DVL3 expression in transfected 293T cell line by DVL3 monoclonal antibody (M04), clone 4H2.

Lane 1: DVL3 transfected lysate(78 kDa).

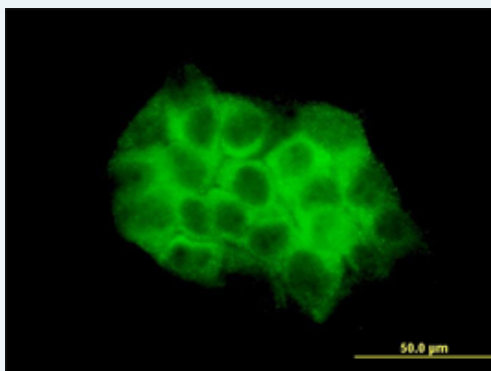
Lane 2: Non-transfected lysate.

 [Protocol Download](#)

Western Blot (Recombinant protein)

 [Protocol Download](#)

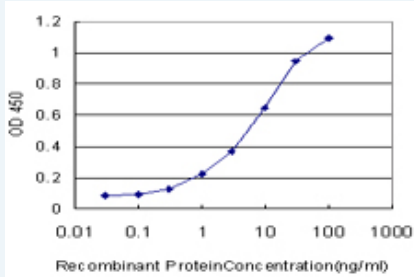
Immunofluorescence



Immunofluorescence of monoclonal antibody to DVL3 on A-431 cell. [antibody concentration 10 ug/ml]

 [Protocol Download](#)

Sandwich ELISA (Recombinant protein)

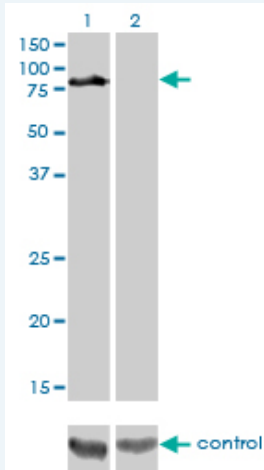


Detection limit for recombinant GST tagged DVL3 is approximately 0.3ng/ml as a capture antibody.

[Protocol Download](#)

ELISA

RNAi Knockdown (Antibody validated)



Western blot analysis of DVL3 over-expressed 293 cell line, cotransfected with DVL3 Validated Chimera RNAi (Cat # H00001857-R01V) (Lane 2) or non-transfected control (Lane 1). Blot probed with DVL3 monoclonal antibody (M04), clone 4H2 (Cat # H00001857-M04). GAPDH (36.1 kDa) used as specificity and loading control.

[Protocol Download](#)

Gene Information

Entrez GeneID: [1857](#)

GeneBank [BC032459](#)

Accession#:

Protein [AAH32459](#)

Accession#:

Gene Name: DVL3

Gene Alias: KIAA0208

Gene dishevelled, dsh homolog 3 (Drosophila)

Description:

Omim ID: [601368](#)

Gene Ontology: [Hyperlink](#)

Gene Summary: This gene is a member of a multi-gene family which shares strong similarity with the Drosophila dishevelled gene, dsh. The Drosophila dishevelled gene encodes a cytoplasmic phosphoprotein that regulates cell proliferation. [provided by RefSeq]

Other dishevelled 3, dishevelled 3 (homologous to Drosophila dsh)

Designations:

Gene Pathway

[Basal cell carcinoma](#) [Colorectal cancer](#) [Melanogenesis](#) [Notch signaling pathway](#)
[Pathways in cancer](#) [Wnt signaling pathway](#)

[服務條款](#) | [隱私權政策](#) | [著作及商標](#) | [網站地圖](#)

©2016 亞諾法生技股份有限公司 Abnova Corporation. 版權所有.