



# SZABO SCANDIC

Part of Europa Biosite

## Produktinformation



Forschungsprodukte & Biochemikalien



Zellkultur & Verbrauchsmaterial



Diagnostik & molekulare Diagnostik



Laborgeräte & Service

Weitere Information auf den folgenden Seiten!  
See the following pages for more information!



### Lieferung & Zahlungsart

siehe unsere [Liefer- und Versandbedingungen](#)

### Zuschläge

- Mindermengenzuschlag
- Trockeneiszuschlag
- Gefahrgutzuschlag
- Expressversand

### SZABO-SCANDIC HandelsgmbH

Quellenstraße 110, A-1100 Wien

T. +43(0)1 489 3961-0

F. +43(0)1 489 3961-7

[mail@szabo-scandic.com](mailto:mail@szabo-scandic.com)

[www.szabo-scandic.com](http://www.szabo-scandic.com)

[linkedin.com/company/szaboscandic](https://www.linkedin.com/company/szaboscandic) 

## DVL3 293T Cell Transient Overexpression Lysate(Denatured)

Catalog # : H00001857-T01

規格 : [ 100 uL ]

List All

### Specification

**Transfected Cell Line:** 293T

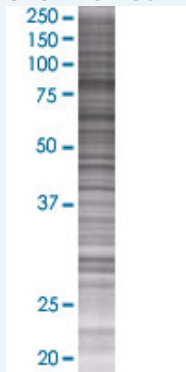
**Plasmid:** pCMV-DVL3 full-length

**Host:** Human

**Theoretical MW (kDa):** 78.87

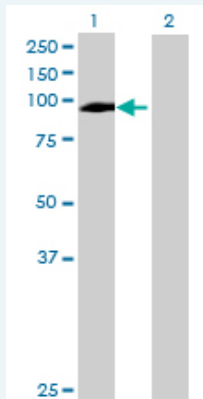
**Quality Control Testing:** Transient overexpression cell lysate was tested with Anti-DVL3 antibody (H00001857-B01) by Western Blots.

#### SDS-PAGE Gel



DVL3 transfected lysate.

#### Western Blot



Lane 1: DVL3 transfected lysate ( 78.87 KDa)

Lane 2: Non-transfected lysate.

**Storage Buffer:** 1X Sample Buffer (50 mM Tris-HCl, 2% SDS, 10% glycerol, 300 mM 2-mercaptoethanol, 0.01% Bromophenol blue)

**Storage Instruction:** Store at -80°C. Aliquot to avoid repeated freezing and thawing.

**MSDS:**  [Download](#)

### Applications

### Application Image

Western Blot

## Western Blot

### Gene Information

Entrez GeneID: [1857](#)

GeneBank  
Accession#: [BC032459](#)

Protein  
Accession#: [AAH32459](#)

Gene Name: DVL3

Gene Alias: KIAA0208

Gene  
Description: dishevelled, dsh homolog 3 (Drosophila)

Omim ID: [601368](#)

Gene Ontology: [Hyperlink](#)

**Gene Summary:** This gene is a member of a multi-gene family which shares strong similarity with the Drosophila dishevelled gene, dsh. The Drosophila dishevelled gene encodes a cytoplasmic phosphoprotein that regulates cell proliferation. [provided by RefSeq]

Other  
Designations: dishevelled 3,dishevelled 3 (homologous to Drosophila dsh)

### Gene Pathway

[Basal cell carcinoma](#) [Colorectal cancer](#) [Melanogenesis](#) [Notch signaling pathway](#)  
[Pathways in cancer](#) [Wnt signaling pathway](#)