



SZABO SCANDIC

Part of Europa Biosite

Produktinformation



Forschungsprodukte & Biochemikalien



Zellkultur & Verbrauchsmaterial



Diagnostik & molekulare Diagnostik



Laborgeräte & Service

Weitere Information auf den folgenden Seiten!
See the following pages for more information!



Lieferung & Zahlungsart

siehe unsere [Liefer- und Versandbedingungen](#)

Zuschläge

- Mindermengenzuschlag
- Trockeneiszuschlag
- Gefahrgutzuschlag
- Expressversand

SZABO-SCANDIC HandelsgmbH

Quellenstraße 110, A-1100 Wien

T. +43(0)1 489 3961-0

F. +43(0)1 489 3961-7

mail@szabo-scandic.com

www.szabo-scandic.com

[linkedin.com/company/szaboscandic](https://www.linkedin.com/company/szaboscandic) 

E2F2 polyclonal antibody (A01)

Catalog # : H00001870-A01

規格 : [50 uL]

[List All](#)

Specification

Product Description: Mouse polyclonal antibody raised against a partial recombinant E2F2.

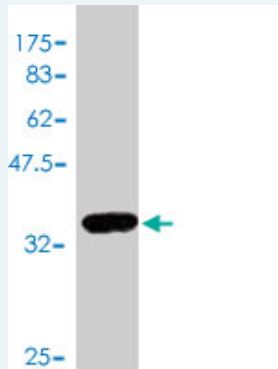
Immunogen: E2F2 (NP_004082, 1 a.a. ~ 110 a.a) partial recombinant protein with GST tag.

Sequence: MLQGPRALASAAGQTPKVPAMSPTLWPSGLSSPQLCPATATYYTPLYPQTAPPAAPGTCLDATPHGPEGQVVRCLPAGRLPAKRKLDLEGIGRPVPEFPTPKGKCI

Host: Mouse

Reactivity: Human

Quality Control Testing: Antibody Reactive Against Recombinant Protein.



Western Blot detection against Immunogen (38.21 KDa) .

Storage Buffer: 50 % glycerol

Storage Instruction: Store at -20°C or lower. Aliquot to avoid repeated freezing and thawing.

MSDS: [Download](#)

Datasheet: [Download](#)

Applications

Western Blot (Recombinant protein)

[Protocol Download](#)

ELISA

Gene Information

Entrez GeneID: [1870](#)

GeneBank Accession#: [NM_004091](#)

Protein Accession#: [NP_004082](#)

Gene Name: E2F2

Gene Alias: E2F-2

Gene Description: E2F transcription factor 2

Omim ID: [600426](#)

Gene Ontology: [Hyperlink](#)

Gene Summary: The protein encoded by this gene is a member of the E2F family of transcription factors. The E2F family plays a crucial role in the control of cell cycle and action of tumor suppressor proteins and is also a target of the transforming proteins of small DNA tumor viruses. The E2F proteins contain several evolutionally conserved domains found in most members of the family. These domains include a DNA binding domain, a dimerization domain which determines interaction with the differentiation regulated transcription factor proteins (DP), a transactivation domain enriched in acidic amino acids, and a tumor suppressor protein association domain which is embedded within the transactivation domain. This protein and another 2 members, E2F1 and E2F3, have an additional cyclin binding domain. This protein binds specifically to retinoblastoma protein pRB in a cell-cycle dependent manner, and it exhibits overall 46% amino acid identity to E2F1. [provided by RefSeq]

Other Designations: OTTHUMP00000003257

Gene Pathway

[Bladder cancer](#) [Cell cycle](#) [Chronic myeloid leukemia](#) [Glioma](#) [Melanoma](#)
[Non-small cell lung cancer](#) [Pancreatic cancer](#) [Pathways in cancer](#) [Prostate cancer](#)
[Small cell lung cancer](#)

Related Disease

[Breast cancer](#) [Breast Neoplasms](#) [Colorectal Neoplasms](#), [Hereditary Nonpolyposis Genetic Predisposition to Disease](#) [Head and Neck Neoplasms](#) [Kidney Failure](#), [Chronic Neoplasm Recurrence](#), [Local Neoplasms](#), [Second Primary Ovarian Neoplasms](#)

[服務條款](#) | [隱私權政策](#) | [著作及商標](#) | [網站地圖](#)

©2016 亞諾法生技股份有限公司 Abnova Corporation. 版權所有.