



# SZABO SCANDIC

Part of Europa Biosite

## Produktinformation



Forschungsprodukte & Biochemikalien



Zellkultur & Verbrauchsmaterial



Diagnostik & molekulare Diagnostik



Laborgeräte & Service

Weitere Information auf den folgenden Seiten!  
See the following pages for more information!



### Lieferung & Zahlungsart

siehe unsere [Liefer- und Versandbedingungen](#)

### Zuschläge

- Mindermengenzuschlag
- Trockeneiszuschlag
- Gefahrgutzuschlag
- Expressversand

### SZABO-SCANDIC HandelsgmbH

Quellenstraße 110, A-1100 Wien

T. +43(0)1 489 3961-0

F. +43(0)1 489 3961-7

[mail@szabo-scandic.com](mailto:mail@szabo-scandic.com)

[www.szabo-scandic.com](http://www.szabo-scandic.com)

[linkedin.com/company/szaboscandic](https://www.linkedin.com/company/szaboscandic) 

## E2F2 MaxPab mouse polyclonal antibody (B01) MaxPab®

Catalog # : H00001870-B01

規格 : [ 50 uL ]

[List All](#)

### Specification

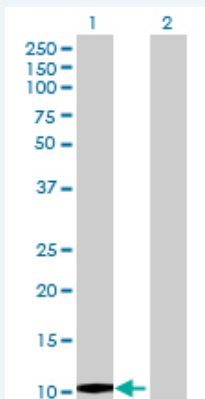
<b>Product Description:</b>	Mouse polyclonal antibody raised against a full-length human E2F2 protein.
<b>Immunogen:</b>	E2F2 (AAH07609, 1 a.a. ~ 83 a.a) full-length human protein.
<b>Sequence:</b>	MESRSVAQAGVQWPDLGSLQLPPRFKRFFCLSLQSSWDYRHAPPRP ANFVFLVETGFCHVSQAGLELLTSSDPPPRPPKVLRL
<b>Host:</b>	Mouse
<b>Reactivity:</b>	Human
<b>Quality Control Testing:</b>	Antibody reactive against mammalian transfected lysate.
<b>Storage Buffer:</b>	No additive
<b>Storage Instruction:</b>	Store at -20°C or lower. Aliquot to avoid repeated freezing and thawing.
<b>Note:</b>	For IHC and IF applications, antibody purification with Protein A will be needed prior to use.

**MSDS:** [Download](#)

**Datasheet:** [Download](#)

### Applications

#### Western Blot (Transfected lysate)



Western Blot analysis of E2F2 expression in transfected 293T cell line ([H00001870-T01](#)) by E2F2 MaxPab polyclonal antibody.

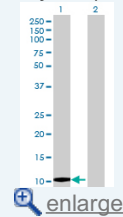
Lane 1: E2F2 transfected lysate(9.24 kDa).

Lane 2: Non-transfected lysate.

[Protocol Download](#)

### Application Image

Western Blot (Transfected lysate)



### Gene Information

Entrez GeneID: [1870](#)

GeneBank [BC007609](#)  
Accession#:

Protein [AAH07609](#)  
Accession#:

Gene Name: E2F2

Gene Alias: E2F-2

Gene Description: E2F transcription factor 2

Omim ID: [600426](#)

Gene Ontology: [Hyperlink](#)

**Gene Summary:** The protein encoded by this gene is a member of the E2F family of transcription factors. The E2F family plays a crucial role in the control of cell cycle and action of tumor suppressor proteins and is also a target of the transforming proteins of small DNA tumor viruses. The E2F proteins contain several evolutionally conserved domains found in most members of the family. These domains include a DNA binding domain, a dimerization domain which determines interaction with the differentiation regulated transcription factor proteins (DP), a transactivation domain enriched in acidic amino acids, and a tumor suppressor protein association domain which is embedded within the transactivation domain. This protein and another 2 members, E2F1 and E2F3, have an additional cyclin binding domain. This protein binds specifically to retinoblastoma protein pRB in a cell-cycle dependent manner, and it exhibits overall 46% amino acid identity to E2F1. [provided by RefSeq]

Other Designations: OTTHUMP00000003257

#### Gene Pathway

[Bladder cancer](#) [Cell cycle](#) [Chronic myeloid leukemia](#) [Glioma](#) [Melanoma](#)  
[Non-small cell lung cancer](#) [Pancreatic cancer](#) [Pathways in cancer](#) [Prostate cancer](#)  
[Small cell lung cancer](#)

#### Related Disease

[Breast cancer](#) [Breast Neoplasms](#) [Colorectal Neoplasms](#) [Hereditary Nonpolyposis Genetic Predisposition to Disease](#) [Head and Neck Neoplasms](#) [Kidney Failure, Chronic](#) [Neoplasm Recurrence, Local](#) [Neoplasms](#) [Second Primary Ovarian Neoplasms](#)

[服務條款](#) | [隱私權政策](#) | [著作及商標](#) | [網站地圖](#)

©2016 亞諾法生技股份有限公司 Abnova Corporation. 版權所有.