



# SZABO SCANDIC

Part of Europa Biosite

## Produktinformation



Forschungsprodukte & Biochemikalien



Zellkultur & Verbrauchsmaterial



Diagnostik & molekulare Diagnostik



Laborgeräte & Service

Weitere Information auf den folgenden Seiten!  
See the following pages for more information!



### Lieferung & Zahlungsart

siehe unsere [Liefer- und Versandbedingungen](#)

### Zuschläge

- Mindermengenzuschlag
- Trockeneiszuschlag
- Gefahrgutzuschlag
- Expressversand

### SZABO-SCANDIC HandelsgmbH

Quellenstraße 110, A-1100 Wien

T. +43(0)1 489 3961-0

F. +43(0)1 489 3961-7

[mail@szabo-scandic.com](mailto:mail@szabo-scandic.com)

[www.szabo-scandic.com](http://www.szabo-scandic.com)

[linkedin.com/company/szaboscandic](https://www.linkedin.com/company/szaboscandic) 



## E2F2 purified MaxPab mouse polyclonal antibody (B01P) MaxPab®

Catalog # : H00001870-B01P

規格 : [ 50 ug ]

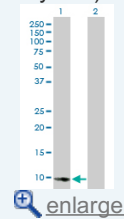
[List All](#)

### Specification

<b>Product Description:</b>	Mouse polyclonal antibody raised against a full-length human E2F2 protein.
<b>Immunogen:</b>	E2F2 (AAH07609, 1 a.a. ~ 83 a.a) full-length human protein.
<b>Sequence:</b>	MESRSVAQAGVQWPD LGSLQLPPRFKRFFCLSLQSSWDYRHAPPRP ANFVFLVETGFCHVSQAGLELLTSSDPPPRPPKVL R
<b>Host:</b>	Mouse
<b>Reactivity:</b>	Human
<b>Quality Control Testing:</b>	Antibody reactive against mammalian transfected lysate.
<b>Storage Buffer:</b>	In 1x PBS, pH 7.4
<b>Storage Instruction:</b>	Store at -20°C or lower. Aliquot to avoid repeated freezing and thawing.
<b>MSDS:</b>	 <a href="#">Download</a>
<b>Datasheet:</b>	 <a href="#">Download</a>

### Application Image

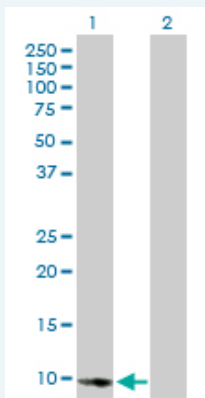
Western Blot (Transfected lysate)



 [enlarge](#)

### Applications

#### Western Blot (Transfected lysate)



Western Blot analysis of E2F2 expression in transfected 293T cell line (H00001870-T01) by E2F2 MaxPab polyclonal antibody.

Lane 1: E2F2 transfected lysate(9.24 KDa).

Lane 2: Non-transfected lysate.

 [Protocol Download](#)

### Gene Information

**Entrez GeneID:** [1870](#)

**GeneBank  
Accession#:** [BC007609](#)

**Protein  
Accession#:** [AAH07609](#)

**Gene Name:** E2F2

**Gene Alias:** E2F-2

**Gene  
Description:** E2F transcription factor 2

**Omim ID:** [600426](#)

**Gene Ontology:** [Hyperlink](#)

**Gene Summary:** The protein encoded by this gene is a member of the E2F family of transcription factors. The E2F family plays a crucial role in the control of cell cycle and action of tumor suppressor proteins and is also a target of the transforming proteins of small DNA tumor viruses. The E2F proteins contain several evolutionally conserved domains found in most members of the family. These domains include a DNA binding domain, a dimerization domain which determines interaction with the differentiation regulated transcription factor proteins (DP), a transactivation domain enriched in acidic amino acids, and a tumor suppressor protein association domain which is embedded within the transactivation domain. This protein and another 2 members, E2F1 and E2F3, have an additional cyclin binding domain. This protein binds specifically to retinoblastoma protein pRB in a cell-cycle dependent manner, and it exhibits overall 46% amino acid identity to E2F1. [provided by RefSeq]

**Other  
Designations:** OTTHUMP00000003257

#### **Gene Pathway**

[Bladder cancer](#) [Cell cycle](#) [Chronic myeloid leukemia](#) [Glioma](#) [Melanoma](#)  
[Non-small cell lung cancer](#) [Pancreatic cancer](#) [Pathways in cancer](#) [Prostate cancer](#)  
[Small cell lung cancer](#)

#### **Related Disease**

[Breast cancer](#) [Breast Neoplasms](#) [Colorectal Neoplasms](#), [Hereditary Nonpolyposis  
Genetic Predisposition to Disease](#) [Head and Neck Neoplasms](#) [Kidney Failure, Chronic](#)  
[Neoplasm Recurrence, Local](#) [Neoplasms](#), [Second Primary](#) [Ovarian Neoplasms](#)