



SZABO SCANDIC

Part of Europa Biosite

Produktinformation



Forschungsprodukte & Biochemikalien



Zellkultur & Verbrauchsmaterial



Diagnostik & molekulare Diagnostik



Laborgeräte & Service

Weitere Information auf den folgenden Seiten!
See the following pages for more information!



Lieferung & Zahlungsart

siehe unsere [Liefer- und Versandbedingungen](#)

Zuschläge

- Mindermengenzuschlag
- Trockeneiszuschlag
- Gefahrgutzuschlag
- Expressversand

SZABO-SCANDIC HandelsgmbH

Quellenstraße 110, A-1100 Wien

T. +43(0)1 489 3961-0

F. +43(0)1 489 3961-7

mail@szabo-scandic.com

www.szabo-scandic.com

[linkedin.com/company/szaboscandic](https://www.linkedin.com/company/szaboscandic)

E2F2 purified MaxPab rabbit polyclonal antibody (D01P) MaxPab®

Catalog # : H00001870-D01P

規格 : [100 ug]

[List All](#)

Specification

Product Description: Rabbit polyclonal antibody raised against a full-length human E2F2 protein.

Immunogen: E2F2 (AAH53676.1, 1 a.a. ~ 437 a.a) full-length human protein.

Sequence:
 MLQGPRALASAAGQTPKVVPAMSPTLWPSGLSSPQLCPATATYYTPL
 YPQTAPPAAPGTCLDATPHGPEGQVVRCLPAGRLPAKRKLDLEGIGRP
 WPEFPTPKGKICIRVDGLPSPKTPKSPGEKTRYDTSLLTKKFYLLSES
 EDGVLDLNWAAEVLVQKRRIYDITNVLEGIQLIRKAKNNIQWVGRGMF
 EDPTRPGKQQQLGQELKELMNTEQALDHLIQSCSLSFKHLTEDKANKRL
 AYVTYQDIRAVGNFKEQTVIAVKAPPQTRLEVDPRTEDNLQIYLKSTQGPI
 EYVLCPEEVQEPDPSPEEPLPSTSTLCPSPDSAQSSSTDPSIMEPTASS
 VPAPAPTQQAPPPPSLVPLEATDSLLELPHPLLQQTEDQFLSPTLACSS
 PLISFSPSLDQDDYLWGLEAGEGISDLFDSYDLGDLLIN

Host: Rabbit

Reactivity: Human, Mouse

Quality Control Testing: Antibody reactive against mammalian transfected lysate.

Storage Buffer: In 1x PBS, pH 7.4

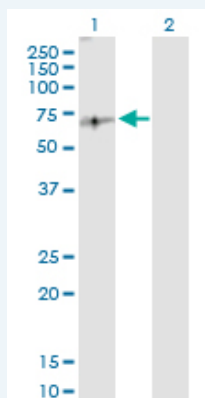
Storage Instruction: Store at -20°C or lower. Aliquot to avoid repeated freezing and thawing.

MSDS: [Download](#)

Datasheet: [Download](#)

Applications

Western Blot (Transfected lysate)



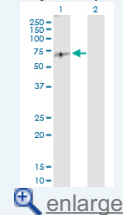
Western Blot analysis of E2F2 expression in transfected 293T cell line ([H00001870-T04](#)) by E2F2 MaxPab polyclonal antibody.

Lane 1: E2F2 transfected lysate(47.50 KDa).

Lane 2: Non-transfected lysate.

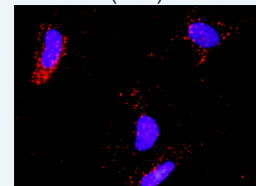
Application Image

Western Blot (Transfected lysate)

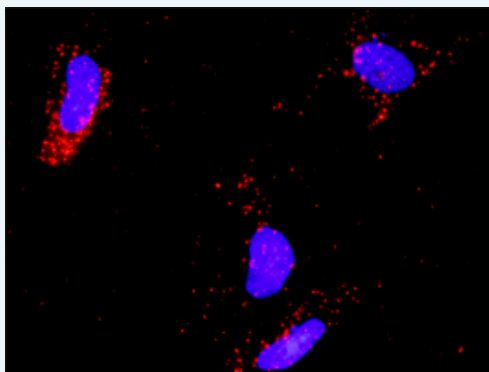


[enlarge](#)

In situ Proximity Ligation Assay (Cell)



[enlarge](#)

In situ Proximity Ligation Assay (Cell)

Proximity Ligation Analysis of protein-protein interactions between E2F2 and E2F1. HeLa cells were stained with anti-E2F2 rabbit purified polyclonal 1:1200 and anti-E2F1 mouse monoclonal antibody 1:50. Each red dot represents the detection of protein-protein interaction complex, and nuclei were counterstained with DAPI (blue).

Gene Information

Entrez GeneID: [1870](#)

GeneBank Accession#: [BC053676.1](#)

Protein Accession#: [AAH53676.1](#)

Gene Name: E2F2

Gene Alias: E2F-2

Gene Description: E2F transcription factor 2

Omim ID: [600426](#)

Gene Ontology: [Hyperlink](#)

Gene Summary: The protein encoded by this gene is a member of the E2F family of transcription factors. The E2F family plays a crucial role in the control of cell cycle and action of tumor suppressor proteins and is also a target of the transforming proteins of small DNA tumor viruses. The E2F proteins contain several evolutionally conserved domains found in most members of the family. These domains include a DNA binding domain, a dimerization domain which determines interaction with the differentiation regulated transcription factor proteins (DP), a transactivation domain enriched in acidic amino acids, and a tumor suppressor protein association domain which is embedded within the transactivation domain. This protein and another 2 members, E2F1 and E2F3, have an additional cyclin binding domain. This protein binds specifically to retinoblastoma protein pRB in a cell-cycle dependent manner, and it exhibits overall 46% amino acid identity to E2F1. [provided by RefSeq]

Other Designations: OTTHUMP00000003257

Gene Pathway

[Bladder cancer](#) [Cell cycle](#) [Chronic myeloid leukemia](#) [Glioma](#) [Melanoma](#)
[Non-small cell lung cancer](#) [Pancreatic cancer](#) [Pathways in cancer](#) [Prostate cancer](#)
[Small cell lung cancer](#)

Related Disease

[Breast cancer](#) [Breast Neoplasms](#) [Colorectal Neoplasms](#), [Hereditary Nonpolyposis Genetic Predisposition to Disease](#) [Head and Neck Neoplasms](#) [Kidney Failure](#), [Chronic Neoplasm Recurrence](#), [Local Neoplasms](#), [Second Primary Ovarian Neoplasms](#)

[服務條款](#) | [隱私權政策](#) | [著作及商標](#) | [網站地圖](#)

©2016 亞諾法生技股份有限公司 Abnova Corporation. 版權所有.